

## IHSG



5675.22  
22.208  
0.39%

Vol (Mn): 8117  
Val (Bn): 7066

## LQ45



946.73  
4.79  
0.51%

Sector Indices	Last	Change	Change %
Agriculture	1812.61	29.64	1.64
Basic Industry	604.23	(1.05)	(0.17)
Consumer	2494.69	15.46	0.62
Finance	911.87	3.00	0.33
Infrastructure	1140.29	6.32	0.55
Manufacture	1481.02	6.50	0.44
Mining	1350.62	3.59	0.27
Misc Industry	1465.76	7.32	0.50
Property	487.24	0.08	0.02
Trade	910.21	2.06	0.23

Source: relitrade next G

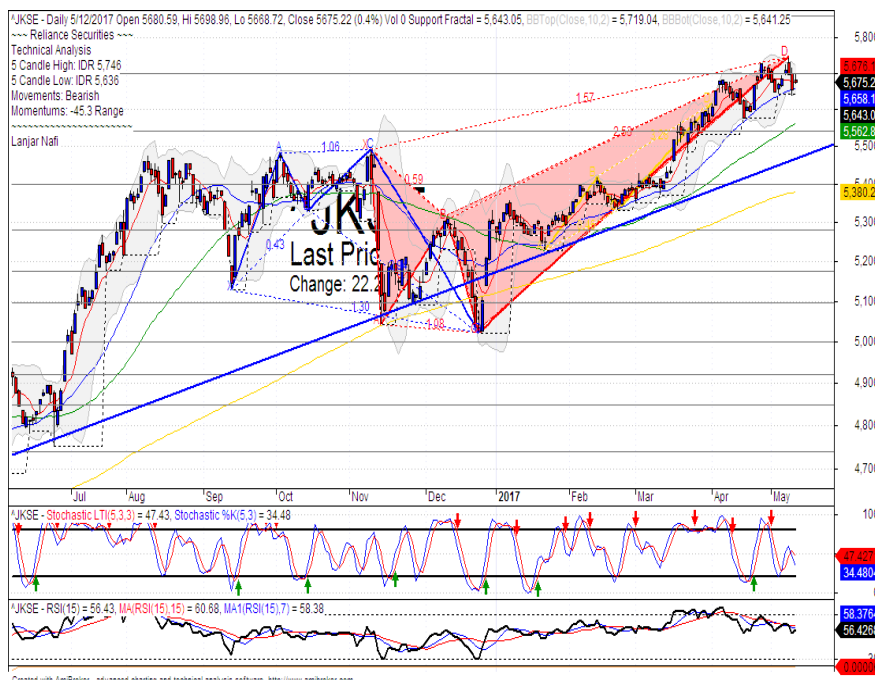
Most Active	Last	Change %	Freq
BUMI	348	6.1	9,422
DEWA	58	16.0	7,141
BRMS	69	30.2	6,768
ADRO	1,480	(1.0)	6,740
SRIL	328	(5.7)	6,546

Most Volume	Last	Change %	M share
RIMO	147	2.1	14,100
MYRX	131	0.8	14,031
DEWA	58	16.0	10,047
BRMS	69	30.2	6,947
BUMI	348	6.1	5,039

Most Value	Last	Change %	Rp Bil
BBCA	18,000	0.4	517.77
TLKM	4,400	0.7	373.21
BBRI	14,025	0.4	338.10
BMRI	12,000	(0.2)	292.57
ASII	8,675	0.9	263.71

Source: relitrade next G

## IHSG Technical Review



R3	6030
R2	5860
R1	5700
Last	5675.22
S1	5540
S2	5400
S3	5280

**Comment:**  
Consolidations at MA7 line.  
Moderate trading volume.

Stochastic, still consolidations movement at near oversold.

RSI consolidations at near overbought oscillator.

Long term bullish trend movement.

Stop-loss if broke the MA7 support level at 5680.  
Correction target at 5600.  
Upside to 5676 if rebounded at MA25.

## ASII



R3	9500
R2	9000
R1	8650
Last	8675
S1	8275
S2	7900
S3	7600
SPECULATIVE BUY	

### Comment:

Bullish kicker signal and rebounded at bullish trend support level.

Stochastic, golden-cross at oversold oscillator. Broad upside potential.

RSI has consolidations movement.

Medium term bullish trend movement.

Upside target to upper Bollinger bands at 9100. Stop-loss if broke the MA50 at 8475.

## BMTR



R3	840
R2	785
R1	725
Last	685
S1	660
S2	595
S3	530
PARTIAL SELL	

### Comment:

Touching the MA200 resistance level. Shooting star candlestick pattern.

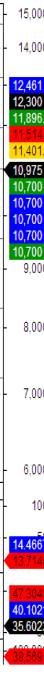
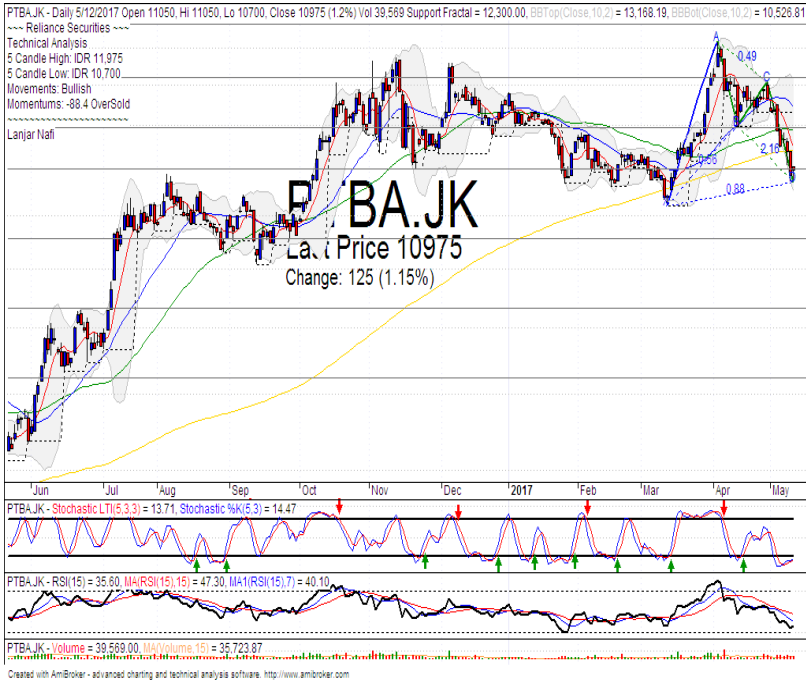
Stochastic dead-cross at overbought oscillator.

RSI bearish reversal momentum.

Long term bearish trend movement.

Stop-loss level at 650 (Broke the support level). Corrections potential until MA25 support level at 560.

## PTBA



R3	13200
R2	11950
R1	11000
Last	10975
S1	9575
S2	8300
S3	7225

**TRADING BUY**

**Comment:**  
 Bullish homing pigeon candlestick pattern. Moderate trading volume.

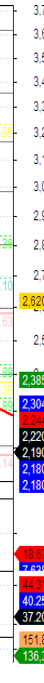
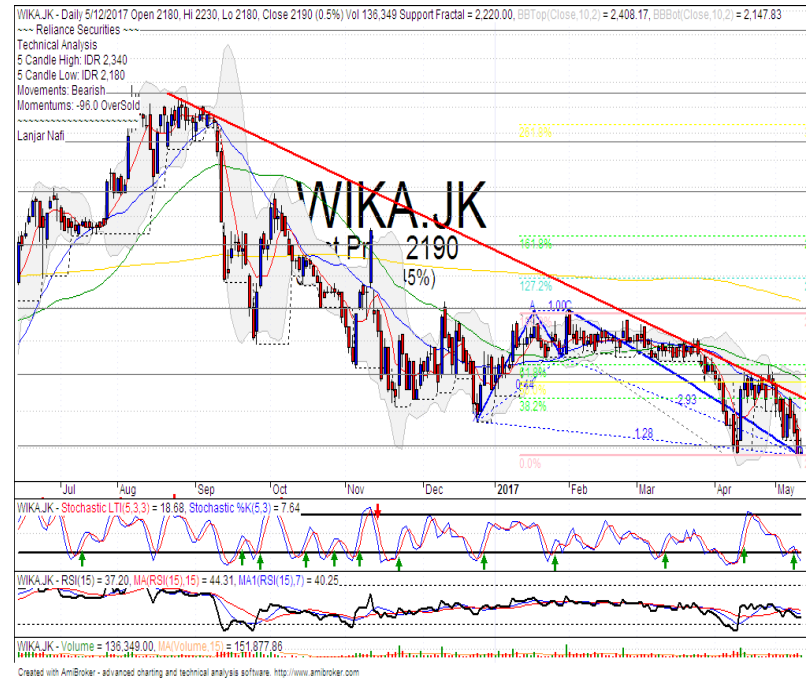
Stochastic golden-cross at oversold oscillator. broad upside potential.

RSI bullish reversal momentum at oversold.

Short term bearish trend movement.

Upside target to MA25 resistance level at 12450. Stop-loss level at 10450 (Broke the lower Bollinger bands).

## WIKA



R3	2600
R2	2400
R1	2200
Last	2190
S1	1985
S2	1850
S3	1735

**TRADING BUY**

**Comment:**  
 Double bottom formations. Reversal signal. Moderate trading volume.

Stochastic golden-cross after consolidations at oversold.

RSI consolidations momentum.

Long term bearish trend movement.

Upside target if double bottom confirmations at 2385. Stop-loss if broke lower bands at 2150.

Stocks	S2	S1	Closing Price	R1	R2	Technical Notes	Rec	Stop Loss	Rec Buy Prc	Target Price
<b>Plantation</b>										
AALI	13,000	14,000	14,700	14,900	15,850	Consolidations	W	14,000		
LSIP	1,405	1,475	1,490	1,535	1,650	Consolidations	H	1,470		1,555
<b>Mining</b>										
INCO	1,650	1,800	1,885	1,965	2,120	Oversold	W	1,850		
<b>Consumer</b>										
UNVR	44,000	46,000	46,800	47,800	50,300	Arrived at fibonacci target	H	46,500		47,000
INDF	7,250	7,900	8,475	8,500	9,125	Consolidations	PS	8,200		
KLBF	1,420	1,490	1,535	1,540	1,600	Consolidations	PS	1,530		
<b>Trading</b>										
ACES	920	970	990	1,030	1,090	Stoch dead-cross	S	960		
AKRA	6,100	6,350	6,350	6,600	7,000	Consolidations	PS	6,300		
UNTR	22,500	24,000	24,375	25,325	26,750	Consolidations	W	24,300		
<b>Property &amp; Construction</b>										
LPCK	4,320	4,460	4,580	4,600	4,820	Consolidations	W	4,550		
WIKA	1,860	1,990	2,190	2,200	2,400	Tweezers bottom	TB	2,180		2,330
BSDE	1,630	1,720	1,810	1,830	1,935	Consolidations	PS	1,750		
WSKT	1,980	2,120	2,230	2,260	2,410	Oversold	W	2,200		
ADHI	1,955	2,070	2,180	2,200	2,300	Oversold	W	2,100		
<b>Basic Industry &amp; Chemical</b>										
SMGR	8,150	8,725	8,850	9,350	9,900	Consolidations	TB	8,500		9,050
CPIN	2,850	3,000	3,000	3,210	3,400	Stoch golden-cross	TB	3,050		3,210
MAIN	950	1,000	1,030	1,065	1,130	Stoch golden-cross	TB	1,010		1,135
INTP	15,500	16,350	17,000	17,500	18,400	Overbought	H	16,800		17,200
<b>Miscellaneous</b>										
SRIL	288	316	328	350	400	Bearish engulfing	S	320		
ASII	8,250	8,650	8,675	9,000	9,500	Stoch golden-cross	TB	8,500		9,200
<b>Finance</b>										
BBTN	2,100	2,230	2,310	2,340	2,360	Bearish momentum	S	2,320		
BMRI	11,450	11,800	12,000	12,200	12,650	Bearish momentum	PS	11,800		
BTPN	2,200	2,340	2,490	2,550	2,770	Oversold	W	2,450		
BJBR	1,750	1,915	1,995	2,140	2,210	Stoch golden-cross	TB	1,910		2,140
BBRI	13,500	14,000	14,025	14,725	15,500	Bearish momentum	S	13,800		
<b>Infrastructure</b>										
TLKM	3,950	4,200	4,400	4,400	4,570	Consolidations	PS	4,300		
PGAS	2,200	2,360	2,460	2,550	2,800	Consolidations	W	2,380		

Source : Reliance Sekuritas Indonesia

## Analyst Conclusions:

The index has breaks the support level. Corrections indications

Legend :

- B: BUY (allocate till 100% of the weighted capital to accumulate, higher than 50% upside probability)
- SB: SPECULATIVE BUY (allocate 25%-50% of the weighted capital to accumulate, 25%-50% upside probability)
- W: WAIT (wait for proper entry level, do the stop-loss if necessary)
- H: HOLD (hold the portfolio position, aim for the best price to distribute)
- PS: PARTIAL SELL (distribute 25%-50% part of the portfolio, 25%-50% downside probability)
- S: SELL (distribute till 100% of the portfolio, higher than 50% downside probability)
- TB: TRADING BUY (short term or intraday trading within a tight trading range. Highly speculative).

Ticker	Resistance	Price	Support	Weekly	Weekly	Indicator			Moving Average			
	Fractal	5/12/2017	Fractal	High	Low	Stochastic	RSI	B. Band	25 Days	50 Days	200 Days	
AALIJK	14,950	14,700	14,100	14,850	14,350	Neutral	Bearish	Neutral	Middle Bands	Upper	Under	Under
ACESJK	965	990	900	1,020	995	Oversold	Bearish	Neutral	Middle Bands	Upper	Upper	Upper
ADHIJK	2,290	2,180	2,150	2,290	2,210	Neutral	Bearish	Neutral	Middle Bands	Under	Under	Under
ADROJK	1,885	1,480	1,850	1,630	1,560	Oversold	Bearish	Oversold	Middle Bands	Under	Under	Under
AISAJK	2,370	2,100	2,100	2,330	2,200	Neutral	Bearish	Neutral	Lower Bands	Under	Under	Upper
AKRAJK	6,900	6,350	6,225	6,750	6,450	Neutral	Bearish	Neutral	Middle Bands	Under	Under	Under
ANTMJK	715	620	625	660	630	Oversold	Bearish	Oversold	Middle Bands	Under	Under	Under
APLNJK	240	200	202	208	204	Oversold	Bearish	Neutral	Middle Bands	Under	Under	Under
ASIIJK	9,350	8,675	8,675	8,900	8,675	Oversold	Bearish	Neutral	Middle Bands	Under	Upper	Upper
ASRIJK	352	330	334	352	338	Neutral	Bearish	Oversold	Lower Bands	Under	Under	Under
BBCAJK	18,000	18,000	17,575	18,550	17,825	Neutral	Bearish	Neutral	Middle Bands	Upper	Upper	Upper
BBKPK	655	635	615	645	630	Neutral	Bullish	Neutral	Middle Bands	Upper	Upper	Under
BBNIJK	6,450	6,675	6,075	6,800	6,625	Neutral	Bearish	Neutral	Middle Bands	Upper	Upper	Upper
BBRIJK	14,350	14,025	12,900	14,350	14,000	Neutral	Bearish	Oversold	Middle Bands	Upper	Upper	Upper
BBTNJK	2,490	2,310	2,230	2,490	2,370	Neutral	Bearish	Neutral	Middle Bands	Under	Upper	Upper
BDMNJK	5,025	5,000	4,850	5,000	4,930	Neutral	Bullish	Neutral	Middle Bands	Upper	Upper	Upper
BHITJK	128	119	117	126	121	Neutral	Bearish	Neutral	Middle Bands	Under	Under	Under
BJBRJK	2,060	1,995	1,985	2,050	2,010	Oversold	Bullish	Neutral	Middle Bands	Under	Under	Upper
BJTMJK	720	670	655	710	680	Neutral	Bearish	Neutral	Middle Bands	Under	Upper	Upper
BKSLJK	100	78	87	86	79	Oversold	Bullish	Oversold	Middle Bands	Under	Under	Under
BMRIJK	12,275	12,000	11,500	12,275	12,100	Neutral	Bearish	Neutral	Middle Bands	Upper	Upper	Upper
BMTRJK	550	685	530	710	640	Oversold	Bearish	Oversold	Middle Bands	Upper	Upper	Under
BSDEJK	1,865	1,810	1,750	1,865	1,810	Neutral	Bullish	Neutral	Middle Bands	Upper	Under	Under
BTPNJK	2,600	2,490	2,580	2,600	2,530	Oversold	Bearish	Oversold	Lower Bands	Under	Under	Under
BWPTJK	394	272	280	302	278	Oversold	Bearish	Neutral	Middle Bands	Under	Under	Upper
CMNPJK	1,420	1,370	1,385	1,400	1,390	Neutral	Bearish	Oversold	Lower Bands	Under	Under	Under
CPINJK	3,400	3,000	3,070	3,130	3,090	Oversold	Bearish	Neutral	Middle Bands	Under	Under	Under
CSAPJK	505	480	440	505	440	Neutral	Bullish	Neutral	Middle Bands	Upper	Upper	Upper
CTRAJK	1,320	1,175	1,170	1,240	1,190	Oversold	Bullish	Neutral	Middle Bands	Under	Under	Under
DILDJK	440	414	420	440	420	Neutral	Bullish	Neutral	Lower Bands	Under	Under	Under
EXCLJK	3,270	3,050	3,030	3,200	3,120	Neutral	Bullish	Neutral	Middle Bands	Under	Under	Upper
GGRMJK	68,575	73,900	63,500	74,000	71,400	Oversold	Bullish	Oversold	Upper Bands	Upper	Upper	Upper
GIAAJK	360	340	340	360	346	Neutral	Bearish	Neutral	Middle Bands	Under	Under	Under
GJTLJK	1,095	1,060	950	1,095	1,020	Neutral	Bearish	Neutral	Middle Bands	Upper	Under	Under
HEXAJK	4,600	3,930	4,350	4,080	3,930	Neutral	Bullish	Neutral	Middle Bands	Under	Under	Upper
HRUMJK	2,650	2,000	2,450	2,430	2,120	Oversold	Bearish	Oversold	Lower Bands	Under	Under	Upper
ICBPJK	8,950	8,600	8,425	8,750	8,650	Neutral	Bullish	Neutral	Middle Bands	Upper	Upper	Under
IMASJK	1,200	1,145	1,105	1,150	1,120	Neutral	Bullish	Neutral	Middle Bands	Under	Under	Under
INCOJK	2,300	1,885	2,140	2,060	1,930	Oversold	Bearish	Oversold	Middle Bands	Under	Under	Under
INDFJK	8,575	8,475	8,400	8,575	8,500	Neutral	Bearish	Neutral	Middle Bands	Upper	Upper	Upper
INDYJK	1,320	850	690	1,320	880	Neutral	Bearish	Neutral	Middle Bands	Upper	Upper	Upper
INTAJK	472	348	282	358	338	Neutral	Bullish	Neutral	Middle Bands	Under	Under	Upper
INTPJK	17,075	17,000	15,800	17,625	16,450	Oversold	Bearish	Neutral	Middle Bands	Upper	Upper	Upper
ITMGJK	19,100	15,950	18,050	19,100	16,725	Oversold	Bearish	Oversold	Lower Bands	Under	Under	Upper
JFPAJK	1,580	1,100	1,510	1,330	1,150	Oversold	Bearish	Oversold	Middle Bands	Under	Under	Under
JSMRJK	4,900	4,810	4,550	4,900	4,750	Neutral	Bearish	Neutral	Middle Bands	Upper	Upper	Upper
KUJAJK	340	322	316	328	322	Neutral	Bullish	Neutral	Middle Bands	Under	Under	Upper
KLBFJK	1,595	1,535	1,515	1,595	1,560	Neutral	Bullish	Neutral	Middle Bands	Under	Under	Under
KRASJK	565	505	540	565	525	Oversold	Bearish	Oversold	Middle Bands	Under	Under	Under
LPCKJK	4,980	4,580	4,210	4,980	4,720	Neutral	Bearish	Neutral	Middle Bands	Upper	Upper	Under
LPKRJK	850	765	775	850	805	Neutral	Bearish	Neutral	Middle Bands	Under	Upper	Under
LPPFJK	15,850	14,800	13,025	15,850	14,825	Neutral	Bearish	Neutral	Middle Bands	Upper	Upper	Under
LSIPJK	1,405	1,490	1,360	1,500	1,410	Neutral	Bullish	Neutral	Upper Bands	Upper	Upper	Under
MAINJK	1,265	1,030	1,225	1,100	1,050	Oversold	Bullish	Oversold	Middle Bands	Under	Under	Under
MAPIJK	6,475	6,450	6,225	6,775	6,625	Neutral	Bearish	Neutral	Middle Bands	Upper	Upper	Upper
MASAJK	252	226	226	236	228	Oversold	Bearish	Neutral	Middle Bands	Under	Under	Under
MNCNJK	1,820	1,970	1,720	2,050	1,990	Oversold	Bearish	Neutral	Middle Bands	Upper	Upper	Upper
MPPAJK	1,010	825	850	890	835	Oversold	Bullish	Oversold	Middle Bands	Under	Under	Under
MTLAJK	332	330	322	330	330	Oversold	Bullish	Neutral	Middle Bands	Upper	Upper	Upper
MYORJK	2,140	2,220	2,000	2,450	2,300	Neutral	Bearish	Neutral	Middle Bands	Upper	Upper	Upper
PGASJK	2,470	2,460	2,340	2,470	2,440	Neutral	Bullish	Neutral	Middle Bands	Upper	Under	Under
PTBAJK	13,075	10,975	12,300	11,975	11,050	Oversold	Bearish	Neutral	Middle Bands	Under	Under	Under
RALSJK	1,190	1,370	1,260	1,385	1,350	Neutral	Bullish	Neutral	Middle Bands	Upper	Upper	Upper
ROTIJK	1,670	1,675	1,620	1,740	1,645	Neutral	Bearish	Neutral	Middle Bands	Upper	Upper	Upper
SCMAJK	2,950	2,840	2,790	2,900	2,870	Neutral	Bearish	Neutral	Middle Bands	Under	Upper	Upper
SGROJK	2,150	2,050	2,000	2,150	2,100	Neutral	Bearish	Neutral	Middle Bands	Under	Upper	Upper
SIMPJK	635	620	585	635	620	Neutral	Bullish	Neutral	Middle Bands	Under	Upper	Upper
SMCBJK	940	890	870	905	895	Neutral	Bearish	Neutral	Middle Bands	Under	Under	Under
SMGRJK	8,875	8,850	8,600	8,875	8,775	Neutral	Bullish	Neutral	Middle Bands	Under	Under	Under
SMRAJK	1,445	1,345	1,340	1,445	1,365	Neutral	Bearish	Neutral	Middle Bands	Under	Under	Under
SRILJK	392	328	282	362	344	Neutral	Bearish	Neutral	Middle Bands	Upper	Under	Upper
SSIAJK	790	680	695	770	705	Oversold	Bearish	Neutral	Lower Bands	Under	Upper	Upper
SSMSJK	1,725	1,740	1,630	1,740	1,680	Neutral	Bullish	Neutral	Middle Bands	Upper	Upper	Upper
TLKMJK	4,450	4,400	4,310	4,450	4,360	Neutral	Bullish	Neutral	Middle Bands	Upper	Upper	Upper
TOTLJK	820	820	800	835	810	Neutral	Bullish	Neutral	Upper Bands	Upper	Upper	Upper
UNTRJK	26,325	24,375	24,750	26,325	25,200	Neutral	Bearish	Neutral	Middle Bands	Under	Under	Upper
UNVRJK	44,000	46,800	44,325	47,025	45,850	Oversold	Bullish	Neutral	Upper Bands	Upper	Upper	Upper

Source : Reliance Research

### Legend :

- Movement: Bullish and Bearish (Indicator Stochastic)
- Momentum: Oversold, Overbought and Neutral (Indicator RSI)
- Resistance Fractal: Strong Resistance
- Support Fractal: Strong Support
- Green: Good Conditions
- Red: Poor Conditions

## HEAD OFFICE

### Reliance Building

Jl. Pluit Sakti Raya No. 27AB,  
Pluit  
Jakarta 14450  
T. +62 21 661 7768  
F. +62 21 661 9884

## RESEARCH DIVISION

### Robertus Yanuar Hardy

*robertus@reliance-securities.com*

### Rio Adrianus

*rio.adrianus@reliance-securities.com*

### Lanjar Nafi Taulat I

*lanjar@reliance-securities.com*

### Aji Setiawan

*aji@reliance-securities.com*

### Shanti Dwi Jayanti

*santi@reliance-securities.com*

Head of Research

Research Analyst

Technical Research Analyst

Associate Research Analyst

Associate Research Analyst

## EQUITY DIVISION

### Jakarta- Pluit

Jl. Pluit Sakti Raya No. 27AB,  
Pluit  
Jakarta 14450  
T. +62 21 661 7768  
F. +62 21 661 9884

### Bandung

Jl.Cisangkuy No.58  
Bandung 40115  
T. +62 22 721 8200  
F. +62 22 721 9255

### Surabaya - Gubeng

Jl. Bangka No. 22  
Surabaya 60281  
T. +62 31 501 1128  
F. +62 31 503 3196

### Makassar

Jl. Boto Lempangan No. 34 J  
Makassar- Sulawesi Selatan  
T. +62 411 3632388  
F. +62 411 3614634

### Jakarta - Sudirman

Menara Batavia Ground Floor  
Jl.KH.Mas Mansyur Kav 126  
Jakarta 10220  
T. +62 21 57905455  
F. +62 21 57950728

### Tasikmalaya

Ruko Tasik Indah Plaza No.21  
Jl. KHZ Mustofa No. 345  
Tasikmalaya 46121  
T. +62 265 345000  
F. +62 265 345003

### Surabaya - Diponegoro

Jl. Diponegoro No.26D  
Surabaya 60261  
T. +62 31 567 0388  
F. +62 31 561 0528

### Medan

Jl. Teuku Amir Hamzah No.40-O  
Medan 20117  
T. +62 61 6638592  
F. +62 61 6638023

### Jakarta - Kebon Jeruk

Plaza Kebon Jeruk  
Jl.Raya Perjuangan Blok A/2  
Jakarta 11530  
T. +62 21 532 4074  
F. +62 21 536 2157

### Malang

Jl. Guntur No. 19  
Malang 65112  
T. +62 341 347 611  
F. +62 341 347 615

### Bali - Denpasar

Dewata Square Blok A3  
Jl. Letda Tantular Renon  
Denpasar 802361  
T. +62 361 225099  
F. +62 361 245099

### Tangerang

Jl. Pahlawan Seribu Ruko BSD  
Sektor 7 Blok RK kav. 9  
Tangerang 15310  
T. +62 21 5387495  
F. +62 21 5387494

### Pekanbaru

Jl. Jendral Sudirman No.73  
Pekanbaru-Riau  
T. +62 761 848414  
F. +62 761 849456

### Pontianak

Jl. MT Haryono No. 6  
Pontianak 78121  
T. +62 561 575674  
F. +62 561 575670

### Jakarta - Centro

Ruko Centro Residence Kav. 4-5  
Tower C Lt. 1 No. 26-29  
Jl. Macan, Daan Mogot  
Jakarta 14450  
T. +62 21 56945227  
F. +62 21 56945226

### Solo

Jl. Slamet Riyadi 330<sup>a</sup>  
Solo 57145  
T. +62 271 736599  
F. +62 271 733478

### Balikpapan

Ruko Bukit Damai Indah  
Blok I, No. 3, Rt.34  
Jl. MT. Haryono, Gunung  
Bahagia, Balikpapan Selatan  
76114  
T. +62 542 746313  
F. +62 542 746317

**IDX CORNER & INVESTMENT GALLERY****President University**

Resto Plaza 1F - Jababeka  
Education Park  
Jl. Ki Hajar Dewantara Raya  
Cikarang - Bekasi 17550  
T. +62 21 89106030

**Universitas Siliwangi  
Tasikmalaya**

Jl. Siliwangi No. 24  
Tasikmalaya 46151  
T. +62 265 323685  
F. +62 265 323534

**Politeknik Kediri**

Jl. Mayor Bismo No. 27  
Kediri 64121  
T. +62 354 683128  
F. +62 354 683128

**Universitas Muhammadiyah  
Sidoarjo**

Jl. Majapahit 666 B  
Sidoarjo, Jawa Timur  
T. +62 31 8945444  
F. +62 31 8949333

**Universitas Tanjungpura  
Pontianak**

Jl. Jendral Ahmad Yani  
Pontianak 78124  
T. +62 561 743465  
F. +62 561 766840

**Universitas Pesantren Tinggi  
Darul Ulum**

Kompleks Pp Darul Ulu,  
Peterongan  
Jombang, Jawa Timur 60281  
T. +62 321 873655  
F. +62 321 875771

**STIE "AUB" Surakarta**

Jl. Mr. Sartono 97, Cengklik  
Nusukan, Surakarta 57135  
T. +62 271 854803  
F. +62 271 853084

**Universitas Surabaya**

Jl. Raya Kalirungkut  
Surabaya 60293  
T. +62 31 298 1203  
F. +62 31 298 1204

**Universitas Muhammadiyah  
Gresik**

Jl. Sumatra 101 GKB  
Gresik 61121  
T. +62 31 395 1414  
F. +62 31 395 2585

**Universitas Negeri Malang**

Jl. Surabaya No. 6  
Malang 65145  
T. +62 341 585914  
F. +62 341 55288

**Universitas Muhammadiyah  
Malang**

Jl. Raya Tlogomas 246  
Malang 65144  
T. +62 341 464318-9  
F. +62 341 460782

**FSEI IAIN Antasari**

Jl. Ahmad Yani Km. 4,5  
Banjarmasin  
T. + 62 511 3265783

**STIE Malangkececwara**

Jl. Terusan Candi Kalasan  
Malang 65142  
T. +62 341 491813  
F. +62 341 495619

**STIESIA Surabaya**

Jl. Menur Pumpungan 30  
Surabaya  
T. +62 31 5947505  
F. +62 31 5932218

**Universitas 17 Agustus  
1945 Banyuwangi**

Jl. Adi Sucipto 26  
Banyuwangi, Jawa Timur  
T. +62 333 419613  
F. +62 333 419163

**STIE Tri Bhakti**

Jl. Teuku Umar No. 24  
Cut Meutia Setiakawan,  
Bekasi  
T. +62 21 82429400,  
82429500  
F. +62 271 726156

**Universitas Islam  
Kalimantan**

Jl. Adiyaksa No. 2, Kayu  
Tangi, Banjarmasin  
T. + 62 511 3303871  
F. + 62 511 3303871

**STIKOM Bali**

Jalan Puputan No. 86, Renon,  
Denpasar  
T. +62361 244445  
F. +62361 264773

**Universitas Muhammadiyah  
Pontianak**

Fakultas Ekonomi UM  
Pontianak  
Jl. Ahmad Yani, No. 111,  
Pontianak 78124  
T. +62561 743465  
F. +62561 766840

**Universitas Negeri  
Makassar**

Fakultas Ekonomi Gedung BT  
Lt.2  
Jl. A.P. Pettarani, Kampus  
UNM, Gunungsari Baru  
Makassar 90222  
T. +62 411 889464 / 881244  
F. +62 411 887604

**STIE AAS Surakarta**

Jl. Slamet Riyadi No. 361,  
Kartasura, Surakarta  
T. +62 271 726156  
F. +62 271 726156

**UPN "Veteran" Yogyakarta**

Jl. Babarsari 2, Tambak Bayan  
Yogyakarta  
T. +62 274 485268  
F. +62 274 487147

**Disclaimer:**

Information, opinions and recommendations contained in this document are presented by PT Reliance Sekuritas Indonesia Tbk. from sources that are considered reliable and dependable. This document is not an offer, invitation or any kind of representations to decide to buy or sell stock. Investment decisions taken based on this document is not the responsibility of PT Reliance Sekuritas Indonesia Tbk. PT Reliance Sekuritas Indonesia Tbk. reserves the right to change the contents of this document at any time without prior notice.