

## IHSG

↓ 5647.00  
-41.871  
-0.74%

Vol (Mn): 5564  
Val (Bn): 6601

## LQ45

↓ 942.16  
-10.30  
-1.08%

Sector Indices	Last	Change	Change %
Agriculture	1815.42	2.83	0.16
Basic Industry	613.98	8.12	1.32
Consumer	2494.36	(14.46)	(0.58)
Finance	900.32	(17.44)	(1.94)
Infrastructure	1127.59	(6.93)	(0.61)
Manufacture	1483.41	(4.06)	(0.27)
Mining	1364.96	16.48	1.21
Misc Industry	1453.84	(14.59)	(1.00)
Property	485.22	(3.59)	(0.74)
Trade	901.98	(4.80)	(0.53)

Source: relitrade next G

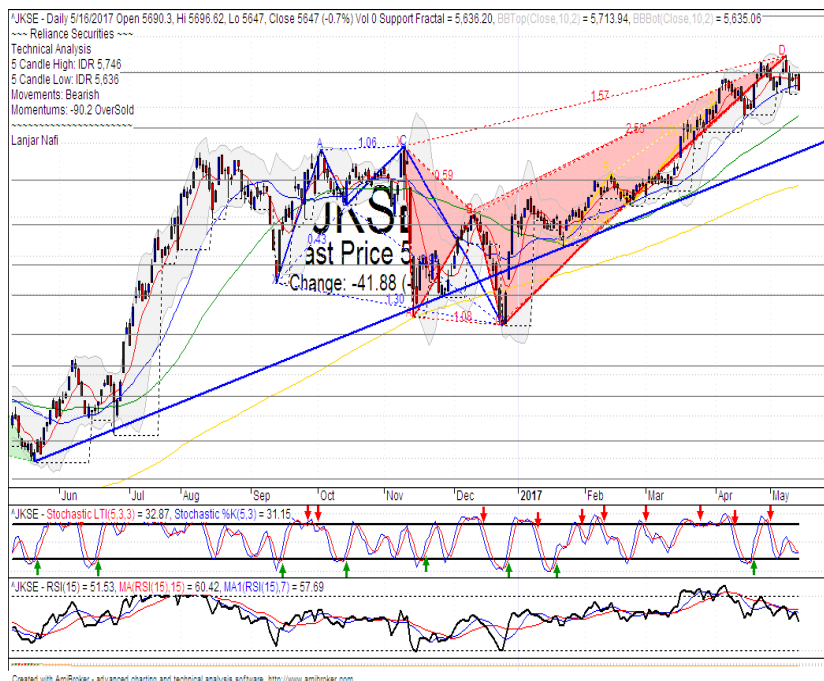
Most Active	Last	Change %	Freq
KOBX	112	(7.4)	21,269
BBCA	17,400	(4.7)	15,720
INDY	760	(11.1)	15,418
PBRX	486	(3.8)	9,934
BNLI	630	1.6	9,575

Most Volume	Last	Change %	M share
MYRX	131	0.0	10,026
RIMO	143	(1.4)	5,920
INDY	760	(11.1)	4,325
BUMI	352	1.1	3,187
SRIL	316	(1.9)	1,563

Most Value	Last	Change %	Rp Bil
BBCA	17,400	(4.7)	830.73
TLKM	4,340	(0.5)	345.81
INDY	760	(11.1)	340.53
BBRI	14,025	(1.9)	326.74
BMRI	11,975	(1.2)	227.77

Source: relitrade next G

## IHSG Technical Review



Created with AmBroker - advanced charting and technical analysis software. <http://www.ambroker.com>

R3	6030
R2	5860
R1	5700
Last	5647
S1	5540
S2	5400
S3	5280

### Comment:

Consolidations at MA25 line. Moderate trading volume.

Stochastic, still consolidations movement at near oversold.

RSI consolidations at near overbought oscillator.

Long term bullish trend movement.

Stop-loss if broke the MA7 support level at 5680. Correction target at 5600. Upside to 5676 if rebounded at MA25.

## INCO



R3	2510
R2	2300
R1	2130
Last	1990
S1	1960
S2	1800
S3	1660
<b>SPECULATIVE BUY</b>	

**Comment:**  
 Bullish kicker signal candlestick pattern. Huge trading volume.

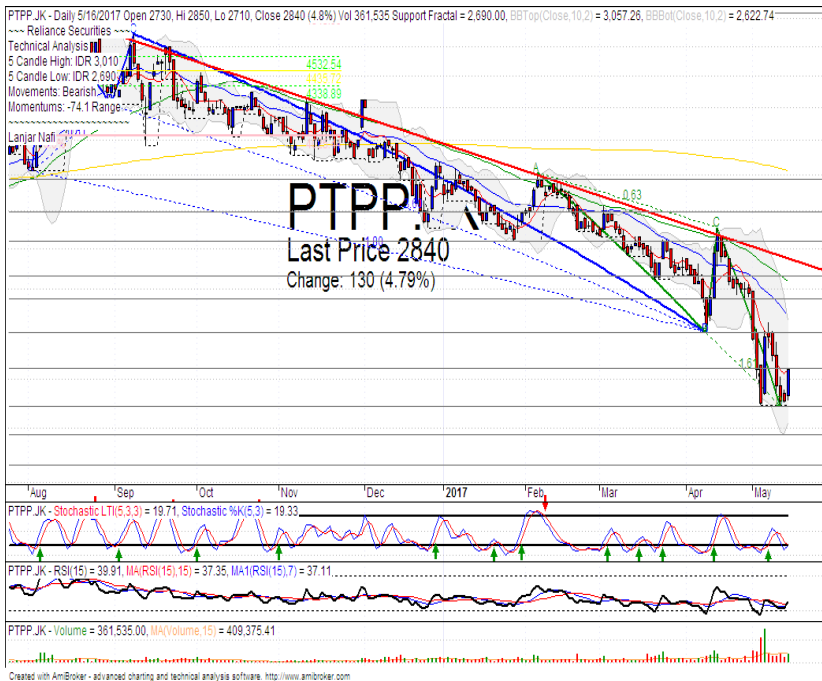
Stochastic, golden-cross at oversold oscillator. Broad upside potential.

RSI has bullish reversal momentum at oversold.

Long term bearish trend movement.

Upside target to MA25 and bearish trend line at 2150. Stop-loss if broke the support level at 1950.

## PTPP



R3	3150
R2	3000
R1	2840
Last	2840
S1	2690
S2	2580
S3	2460
<b>BUY</b>	

**Comment:**  
 Double bottom formations. Reversal signal.

Stochastic golden-cross at oversold oscillator.

RSI bullish reversal momentum at oversold.

Long term bearish trend movement.

Upside target to MA25 resistance level at 3080. Stop-loss at 2660 (Broke the support level). Recommended buying price at 2830.

## TINS



R3	1080
R2	1020
R1	945
Last	875
S1	860
S2	795
S3	735
<b>SPECULATIVE BUY</b>	

### Comment:

Tweezers bottom candlestick pattern. Reversal signal. Huge trading volume.

Stochastic golden-cross at oversold oscillator. Broad upside potential.

RSI bullish reversal momentum at oversold.

Medium term bearish trend movement.

Upside target to MA200 resistance level at 970. Stop-loss level at 845 (Broke the support level).

## UNVR



R3	55000
R2	52800
R1	50225
Last	47800
S1	47800
S2	46000
S3	44000
<b>SELL</b>	

### Comment:

Bullish harami candlestick pattern at upper band and channeling trend.

Stochastic dead-cross at overbought oscillator.

RSI bearish reversal momentum after reached the overbought area.

Medium term bullish trend movement.

Stop-loss level if confirmations pattern at 47250. Corrections target to bullish trend support level at 45650.

Stocks	S2	S1	Closing Price	R1	R2	Technical Notes	Rec	Stop Loss	Rec Buy Prc	Target Price
<b>Plantation</b>										
AALI	13,000	14,000	14,650	14,900	15,850	Pulled back MA50	PS	14,500		
LSIP	1,405	1,475	1,520	1,535	1,650	Northern star	PS	1,470		
<b>Mining</b>										
INCO	1,800	1,965	1,990	2,120	2,300	Bullish separating line	SB	1,965	1,980	2,140
<b>Consumer</b>										
UNVR	44,000	46,000	47,800	47,800	50,300	Bearish harami	PS	47,500		
INDF	7,250	7,900	8,375	8,500	9,125	Consolidations	PS	8,300		
KLBF	1,420	1,490	1,510	1,540	1,600	Consolidations	PS	1,500		
<b>Trading</b>										
ACES	870	920	945	970	1,030	Consolidations	W	910		
AKRA	5,800	6,100	6,275	6,350	6,600	Arrived at Bullish trend support	W	6,200		
UNTR	21,050	22,500	23,825	24,000	25,325	Bearish momentum	W	23,250		
<b>Property &amp; Construction</b>										
LPCK	4,320	4,460	4,550	4,600	4,820	Consolidations	PS	4,450		
WIKA	1,990	2,200	2,230	2,400	2,600	Double bottom	TB	2,200		2,380
BSDE	1,630	1,720	1,805	1,830	1,935	Consolidations	PS	1,750		
WSKT	2,120	2,260	2,280	2,410	2,600	Bullish momentum	B	2,200	2,270	2,370
ADHI	1,955	2,070	2,190	2,200	2,300	Oversold	TB	2,100		2,300
<b>Basic Industry &amp; Chemical</b>										
SMGR	8,150	8,725	9,200	9,350	9,900	Bullish momentum	H	8,500		9,450
CPIN	2,850	3,000	3,000	3,210	3,400	Consolidations	W	2,950		
MAIN	950	1,000	1,040	1,065	1,130	Stoch golden-cross	TB	1,010		1,135
INTP	17,500	18,400	18,475	19,200	20,175	Overbought	H	18,300		19,000
<b>Miscellaneous</b>										
SRIL	288	316	316	350	400	Bearish momentum	S	320		
ASII	8,250	8,600	8,600	9,000	9,500	Stoch golden-cross	SB	8,500		9,200
<b>Finance</b>										
BBTN	2,100	2,230	2,340	2,340	2,360	Rebounded at MA25	TB	2,280		2,400
BMRI	11,450	11,800	11,975	12,200	12,650	Bearish momentum	PS	11,800		
BTPN	2,200	2,340	2,510	2,550	2,770	Stoch golden-cross	TB	2,450		2,650
BJBR	1,750	1,915	1,985	2,140	2,210	Stoch golden-cross	TB	1,910		2,140
BBRI	13,500	14,000	14,025	14,725	15,500	Bearish engulfing	S	13,800		
<b>Infrastructure</b>										
TLKM	3,950	4,200	4,340	4,400	4,570	Consolidations	PS	4,300		
PGAS	2,200	2,360	2,360	2,550	2,800	Consolidations	W	2,350		

Source : Reliance Sekuritas Indonesia

## Analyst Conclusions:

The index has breaks the support level. Corrections indications

Legend :

- B: BUY (allocate till 100% of the weighted capital to accumulate, higher than 50% upside probability)
- SB: SPECULATIVE BUY (allocate 25%-50% of the weighted capital to accumulate, 25%-50% upside probability)
- W: WAIT (wait for proper entry level, do the stop-loss if necessary)
- H: HOLD (hold the portfolio position, aim for the best price to distribute)
- PS: PARTIAL SELL (distribute 25%-50% part of the portfolio, 25%-50% downside probability)
- S: SELL (distribute till 100% of the portfolio, higher than 50% downside probability)
- TB: TRADING BUY (short term or intraday trading within a tight trading range. Highly speculative).

Ticker	Resistance		Price		Support		Weekly		Indicator			Moving Average		
	Fractal	5/16/2017	Fractal	High	Low	High	Low	Stochastic	RSI	B. Band	25 Days	50 Days	200 Days	
AALIJK	14,950	14,650	14,200	14,850	14,575	14,850	14,575	Neutral	Bullish	Neutral	Middle Bands	Upper	Under	Under
ACESJK	965	945	900	1,020	965	1,020	965	Neutral	Bearish	Neutral	Middle Bands	Upper	Upper	Upper
ADHIJK	2,290	2,190	2,160	2,250	2,210	2,250	2,210	Oversold	Bullish	Neutral	Middle Bands	Under	Under	Under
ADROJK	1,885	1,465	1,850	1,620	1,500	1,620	1,500	Oversold	Bearish	Oversold	Middle Bands	Under	Under	Under
AISAJK	2,370	2,130	2,100	2,330	2,120	2,330	2,120	Oversold	Bearish	Neutral	Middle Bands	Under	Under	Upper
AKRAJK	6,750	6,275	6,225	6,750	6,375	6,750	6,375	Neutral	Bearish	Neutral	Middle Bands	Under	Under	Under
ANTMJK	715	700	625	705	625	705	625	Neutral	Bullish	Neutral	Middle Bands	Upper	Under	Under
APLNJK	240	195	202	208	200	208	200	Oversold	Bullish	Oversold	Lower Bands	Under	Under	Under
ASIIJK	9,350	8,600	8,675	8,900	8,675	8,900	8,675	Neutral	Bullish	Neutral	Middle Bands	Under	Upper	Upper
ASRIJK	352	330	334	352	334	352	334	Oversold	Bearish	Oversold	Middle Bands	Under	Under	Under
BBCAJK	18,550	17,400	17,750	18,550	17,950	18,550	17,950	Neutral	Bearish	Neutral	Middle Bands	Under	Upper	Upper
BBKPK	655	635	625	645	640	645	640	Neutral	Bearish	Neutral	Middle Bands	Under	Upper	Under
BBNIJK	6,450	6,550	6,075	6,800	6,600	6,800	6,600	Neutral	Bearish	Neutral	Middle Bands	Upper	Upper	Upper
BBRIJK	14,350	14,025	13,725	14,550	14,150	14,550	14,150	Neutral	Bearish	Neutral	Middle Bands	Upper	Upper	Upper
BBTNJK	2,490	2,340	2,300	2,490	2,330	2,490	2,330	Oversold	Bearish	Neutral	Middle Bands	Upper	Upper	Upper
BDMNJK	5,025	4,900	4,850	5,075	4,950	5,075	4,950	Neutral	Bearish	Neutral	Middle Bands	Upper	Upper	Upper
BHITJK	126	123	117	126	121	126	121	Neutral	Bullish	Neutral	Middle Bands	Upper	Under	Under
BJBRJK	2,040	1,985	1,985	2,040	2,010	2,040	2,010	Neutral	Bullish	Neutral	Middle Bands	Under	Under	Under
BJTMJK	720	680	665	710	680	710	680	Neutral	Bearish	Neutral	Middle Bands	Under	Upper	Upper
BKSLJK	100	79	76	83	79	83	79	Neutral	Bullish	Neutral	Middle Bands	Under	Under	Under
BMRIJK	12,175	11,975	11,925	12,175	12,100	12,175	12,100	Neutral	Bearish	Neutral	Middle Bands	Upper	Upper	Upper
BMTRJK	710	650	530	710	645	710	645	Neutral	Bearish	Neutral	Middle Bands	Upper	Upper	Under
BSDEJK	1,865	1,805	1,745	1,865	1,810	1,865	1,810	Neutral	Bullish	Neutral	Middle Bands	Upper	Under	Under
BTPNJK	2,600	2,510	2,460	2,590	2,530	2,590	2,530	Neutral	Bullish	Neutral	Middle Bands	Under	Under	Under
BWPTJK	394	274	266	298	278	298	278	Oversold	Bullish	Neutral	Middle Bands	Under	Under	Upper
CMNPJK	1,420	1,370	1,360	1,400	1,375	1,400	1,375	Neutral	Bearish	Oversold	Middle Bands	Under	Under	Under
CPINJK	3,400	3,000	2,980	3,120	3,060	3,120	3,060	Neutral	Bearish	Neutral	Middle Bands	Under	Under	Under
CSAPJK	505	474	440	505	476	505	476	Neutral	Bearish	Neutral	Middle Bands	Upper	Under	Upper
CTRAJK	1,320	1,160	1,150	1,210	1,175	1,210	1,175	Neutral	Bullish	Neutral	Middle Bands	Under	Under	Under
DILDJK	440	416	404	426	416	426	416	Neutral	Bullish	Neutral	Middle Bands	Under	Under	Under
EXCLJK	3,180	3,010	3,030	3,180	3,070	3,180	3,070	Neutral	Bearish	Neutral	Middle Bands	Under	Under	Upper
GGRMJK	68,575	70,500	69,500	74,000	71,975	74,000	71,975	Oversold	Bearish	Neutral	Middle Bands	Upper	Upper	Upper
GIAAJK	360	342	340	360	346	360	346	Oversold	Bearish	Neutral	Middle Bands	Under	Under	Under
GJTLJK	1,095	1,025	1,010	1,095	1,050	1,095	1,050	Neutral	Bearish	Neutral	Middle Bands	Under	Under	Under
HEXAJK	4,600	3,830	3,810	4,000	3,930	4,000	3,930	Neutral	Bearish	Neutral	Middle Bands	Under	Under	Upper
HRUMJK	2,650	2,040	2,450	2,410	2,090	2,410	2,090	Oversold	Bullish	Oversold	Middle Bands	Under	Under	Upper
ICBPJK	8,750	8,575	8,500	8,750	8,675	8,750	8,675	Neutral	Bearish	Neutral	Middle Bands	Upper	Upper	Under
IMASJK	1,150	1,140	1,105	1,150	1,125	1,150	1,125	Neutral	Bullish	Neutral	Middle Bands	Under	Under	Under
INCOJK	2,300	1,990	2,140	2,000	1,910	2,000	1,910	Oversold	Bullish	Neutral	Middle Bands	Under	Under	Under
INDFJK	8,575	8,375	8,300	8,525	8,500	8,525	8,500	Neutral	Bullish	Neutral	Middle Bands	Upper	Upper	Upper
INDYJK	1,320	760	690	1,210	875	1,210	875	Oversold	Bearish	Neutral	Middle Bands	Under	Under	Upper
INTAJK	472	358	282	362	348	362	348	Neutral	Bullish	Neutral	Middle Bands	Under	Under	Upper
INTPJK	17,075	18,475	15,800	18,650	16,775	18,650	16,775	Oversold	Bullish	Oversold	Upper Bands	Upper	Upper	Upper
ITMGJK	19,100	15,000	18,050	18,400	15,500	18,400	15,500	Oversold	Bullish	Neutral	Middle Bands	Under	Under	Under
JFPAJK	1,580	1,180	1,510	1,280	1,100	1,280	1,100	Oversold	Bullish	Oversold	Middle Bands	Under	Under	Under
JSMRJK	4,900	4,800	4,660	4,860	4,790	4,860	4,790	Neutral	Bullish	Neutral	Middle Bands	Upper	Upper	Upper
KUJAJK	340	324	312	328	324	328	324	Neutral	Bullish	Neutral	Middle Bands	Under	Under	Upper
KLBFJK	1,580	1,510	1,515	1,580	1,535	1,580	1,535	Neutral	Bearish	Neutral	Middle Bands	Under	Under	Under
KRASJK	565	530	500	560	510	560	510	Oversold	Bullish	Neutral	Middle Bands	Under	Under	Under
LPCKJK	4,980	4,550	4,450	4,930	4,700	4,930	4,700	Neutral	Bearish	Neutral	Middle Bands	Upper	Upper	Under
LPKRJK	850	740	775	845	775	845	775	Oversold	Bearish	Neutral	Lower Bands	Under	Under	Under
LPPFJK	15,850	14,950	14,200	15,700	14,825	15,700	14,825	Neutral	Bullish	Neutral	Middle Bands	Upper	Upper	Under
LSIPJK	1,405	1,520	1,395	1,530	1,450	1,530	1,450	Neutral	Bullish	Neutral	Upper Bands	Upper	Upper	Under
MAINJK	1,265	1,040	1,020	1,080	1,035	1,080	1,035	Oversold	Bullish	Oversold	Middle Bands	Under	Under	Under
MAPIJK	6,475	6,200	6,225	6,775	6,300	6,775	6,300	Neutral	Bearish	Neutral	Middle Bands	Under	Upper	Upper
MASAJK	252	218	226	240	228	240	228	Oversold	Bearish	Neutral	Lower Bands	Under	Under	Under
MNCNJK	2,050	1,960	1,720	2,050	1,960	2,050	1,960	Neutral	Bearish	Neutral	Middle Bands	Upper	Upper	Upper
MPPAJK	1,010	835	815	875	835	875	835	Oversold	Bullish	Oversold	Middle Bands	Under	Under	Under
MTLAJK	332	322	322	330	324	330	324	Neutral	Bearish	Neutral	Lower Bands	Under	Under	Upper
MYORJK	2,450	2,100	2,000	2,450	2,210	2,450	2,210	Neutral	Bearish	Neutral	Middle Bands	Upper	Upper	Upper
PGASJK	2,470	2,360	2,340	2,470	2,420	2,470	2,420	Neutral	Bearish	Neutral	Middle Bands	Under	Under	Under
PTBAJK	13,075	10,850	12,300	11,700	11,050	11,700	11,050	Oversold	Bullish	Neutral	Middle Bands	Under	Under	Under
RALSJK	1,190	1,365	1,270	1,420	1,380	1,420	1,380	Neutral	Bullish	Neutral	Middle Bands	Upper	Upper	Upper
ROTIJK	1,670	1,540	1,620	1,740	1,600	1,740	1,600	Neutral	Bearish	Neutral	Lower Bands	Under	Under	Under
SCMAJK	2,950	2,860	2,830	2,900	2,870	2,900	2,870	Neutral	Bearish	Neutral	Middle Bands	Upper	Upper	Upper
SGROJK	2,150	2,020	2,000	2,140	2,050	2,140	2,050	Neutral	Bearish	Neutral	Lower Bands	Under	Under	Upper
SIMPJK	635	615	585	635	625	635	625	Neutral	Bullish	Neutral	Middle Bands	Under	Upper	Upper
SMCBJK	940	870	870	905	895	905	895	Neutral	Bearish	Neutral	Lower Bands	Under	Under	Under
SMGRJK	8,875	9,200	8,600	9,225	8,775	9,225	8,775	Neutral	Bullish	Neutral	Upper Bands	Upper	Upper	Under
SMRAJK	1,445	1,305	1,330	1,445	1,355	1,445	1,355	Oversold	Bearish	Neutral	Lower Bands	Under	Under	Under
SRILJK	362	316	282	362	326	362	326	Neutral	Bearish	Neutral	Middle Bands	Upper	Under	Upper
SSIAJK	790	660	660	750	680	750	680	Oversold	Bearish	Neutral	Lower Bands	Under	Under	Upper
SSMSJK	1,725	1,745	1,630	1,745	1,705	1,745	1,705	Oversold	Bullish	Neutral	Middle Bands	Upper	Upper	Upper
TLKMJK	4,450	4,340	4,310	4,450	4,390	4,450	4,390	Neutral	Bearish	Neutral	Middle Bands	Upper	Upper	Upper
TOTLJK	835	760	800	835	790	835	790	Neutral	Bearish	Neutral	Lower Bands	Under	Under	Under
UNTRJK	26,325	23,825	24,750	26,200	24,675	26,200	24,675	Oversold	Bearish	Neutral	Middle Bands	Under	Under	Upper
UNVRJK	44,000	47,800	44,325	48,575	46,425	48,575	46,425	Oversold	Bearish	Oversold	Upper Bands	Upper	Upper	Upper

Source : Reliance Research

### Legend :

- Movement: Bullish and Bearish (Indicator Stochastic)
- Momentum: Oversold, Overbought and Neutral (Indicator RSI)
- Resistance Fractal: Strong Resistance
- Support Fractal: Strong Support
- Green: Good Conditions
- Red: Poor Conditions

## HEAD OFFICE

### Reliance Building

Jl. Pluit Sakti Raya No. 27AB,  
Pluit  
Jakarta 14450  
T. +62 21 661 7768  
F. +62 21 661 9884

## RESEARCH DIVISION

### Robertus Yanuar Hardy

*robertus@reliance-securities.com*

### Rio Adrianus

*rio.adrianus@reliance-securities.com*

### Lanjar Nafi Taulat I

*lanjar@reliance-securities.com*

### Aji Setiawan

*aji@reliance-securities.com*

### Shanti Dwi Jayanti

*santi@reliance-securities.com*

Head of Research

Research Analyst

Technical Research Analyst

Associate Research Analyst

Associate Research Analyst

## EQUITY DIVISION

### Jakarta- Pluit

Jl. Pluit Sakti Raya No. 27AB,  
Pluit  
Jakarta 14450  
T. +62 21 661 7768  
F. +62 21 661 9884

### Bandung

Jl.Cisangkuy No.58  
Bandung 40115  
T. +62 22 721 8200  
F. +62 22 721 9255

### Surabaya - Gubeng

Jl. Bangka No. 22  
Surabaya 60281  
T. +62 31 501 1128  
F. +62 31 503 3196

### Makassar

Jl. Boto Lempangan No. 34 J  
Makassar- Sulawesi Selatan  
T. +62 411 3632388  
F. +62 411 3614634

### Jakarta - Sudirman

Menara Batavia Ground Floor  
Jl.KH.Mas Mansyur Kav 126  
Jakarta 10220  
T. +62 21 57905455  
F. +62 21 57950728

### Tasikmalaya

Ruko Tasik Indah Plaza No.21  
Jl. KHZ Mustofa No. 345  
Tasikmalaya 46121  
T. +62 265 345000  
F. +62 265 345003

### Surabaya - Diponegoro

Jl. Diponegoro No.26D  
Surabaya 60261  
T. +62 31 567 0388  
F. +62 31 561 0528

### Medan

Jl. Teuku Amir Hamzah No.40-O  
Medan 20117  
T. +62 61 6638592  
F. +62 61 6638023

### Jakarta - Kebon Jeruk

Plaza Kebon Jeruk  
Jl.Raya Perjuangan Blok A/2  
Jakarta 11530  
T. +62 21 532 4074  
F. +62 21 536 2157

### Malang

Jl. Guntur No. 19  
Malang 65112  
T. +62 341 347 611  
F. +62 341 347 615

### Bali - Denpasar

Dewata Square Blok A3  
Jl. Letda Tantular Renon  
Denpasar 802361  
T. +62 361 225099  
F. +62 361 245099

### Tangerang

Jl. Pahlawan Seribu Ruko BSD  
Sektor 7 Blok RK kav. 9  
Tangerang 15310  
T. +62 21 5387495  
F. +62 21 5387494

### Pekanbaru

Jl. Jendral Sudirman No.73  
Pekanbaru-Riau  
T. +62 761 848414  
F. +62 761 849456

### Pontianak

Jl. MT Haryono No. 6  
Pontianak 78121  
T. +62 561 575674  
F. +62 561 575670

### Jakarta - Centro

Ruko Centro Residence Kav. 4-5  
Tower C Lt. 1 No. 26-29  
Jl. Macan, Daan Mogot  
Jakarta 14450  
T. +62 21 56945227  
F. +62 21 56945226

### Solo

Jl. Slamet Riyadi 330<sup>a</sup>  
Solo 57145  
T. +62 271 736599  
F. +62 271 733478

### Balikpapan

Ruko Bukit Damai Indah  
Blok I, No. 3, Rt.34  
Jl. MT. Haryono, Gunung  
Bahagia, Balikpapan Selatan  
76114  
T. +62 542 746313  
F. +62 542 746317

**IDX CORNER & INVESTMENT GALLERY****President University**

Resto Plaza 1F - Jababeka  
Education Park  
Jl. Ki Hajar Dewantara Raya  
Cikarang - Bekasi 17550  
T. +62 21 89106030

**Universitas Siliwangi  
Tasikmalaya**

Jl. Siliwangi No. 24  
Tasikmalaya 46151  
T. +62 265 323685  
F. +62 265 323534

**Politeknik Kediri**

Jl. Mayor Bismo No. 27  
Kediri 64121  
T. +62 354 683128  
F. +62 354 683128

**Universitas Muhammadiyah  
Sidoarjo**

Jl. Majapahit 666 B  
Sidoarjo, Jawa Timur  
T. +62 31 8945444  
F. +62 31 8949333

**Universitas Tanjungpura  
Pontianak**

Jl. Jendral Ahmad Yani  
Pontianak 78124  
T. +62 561 743465  
F. +62 561 766840

**Universitas Pesantren Tinggi  
Darul Ulum**

Kompleks Pp Darul Ulu,  
Peterongan  
Jombang, Jawa Timur 60281  
T. +62 321 873655  
F. +62 321 875771

**STIE "AUB" Surakarta**

Jl. Mr. Sartono 97, Cengklik  
Nusukan, Surakarta 57135  
T. +62 271 854803  
F. +62 271 853084

**Universitas Surabaya**

Jl. Raya Kalirungkut  
Surabaya 60293  
T. +62 31 298 1203  
F. +62 31 298 1204

**Universitas Muhammadiyah  
Gresik**

Jl. Sumatra 101 GKB  
Gresik 61121  
T. +62 31 395 1414  
F. +62 31 395 2585

**Universitas Negeri Malang**

Jl. Surabaya No. 6  
Malang 65145  
T. +62 341 585914  
F. +62 341 55288

**Universitas Muhammadiyah  
Malang**

Jl. Raya Tlogomas 246  
Malang 65144  
T. +62 341 464318-9  
F. +62 341 460782

**FSEI IAIN Antasari**

Jl. Ahmad Yani Km. 4,5  
Banjarmasin  
T. + 62 511 3265783

**STIE Malangkececwara**

Jl. Terusan Candi Kalasan  
Malang 65142  
T. +62 341 491813  
F. +62 341 495619

**STIESIA Surabaya**

Jl. Menur Pumpungan 30  
Surabaya  
T. +62 31 5947505  
F. +62 31 5932218

**Universitas 17 Agustus  
1945 Banyuwangi**

Jl. Adi Sucipto 26  
Banyuwangi, Jawa Timur  
T. +62 333 419613  
F. +62 333 419163

**STIE Tri Bhakti**

Jl. Teuku Umar No. 24  
Cut Meutia Setiakawan,  
Bekasi  
T. +62 21 82429400,  
82429500  
F. +62 271 726156

**Universitas Islam  
Kalimantan**

Jl. Adiyaksa No. 2, Kayu  
Tangi, Banjarmasin  
T. + 62 511 3303871  
F. + 62 511 3303871

**STIKOM Bali**

Jalan Puputan No. 86, Renon,  
Denpasar  
T. +62361 244445  
F. +62361 264773

**Universitas Muhammadiyah  
Pontianak**

Fakultas Ekonomi UM  
Pontianak  
Jl. Ahmad Yani, No. 111,  
Pontianak 78124  
T. +62561 743465  
F. +62561 766840

**Universitas Negeri  
Makassar**

Fakultas Ekonomi Gedung BT  
Lt.2  
Jl. A.P. Pettarani, Kampus  
UNM, Gunungsari Baru  
Makassar 90222  
T. +62 411 889464 / 881244  
F. +62 411 887604

**STIE AAS Surakarta**

Jl. Slamet Riyadi No. 361,  
Kartasura, Surakarta  
T. +62 271 726156  
F. +62 271 726156

**UPN "Veteran" Yogyakarta**

Jl. Babarsari 2, Tambak Bayan  
Yogyakarta  
T. +62 274 485268  
F. +62 274 487147

**Disclaimer:**

Information, opinions and recommendations contained in this document are presented by PT Reliance Sekuritas Indonesia Tbk. from sources that are considered reliable and dependable. This document is not an offer, invitation or any kind of representations to decide to buy or sell stock. Investment decisions taken based on this document is not the responsibility of PT Reliance Sekuritas Indonesia Tbk. PT Reliance Sekuritas Indonesia Tbk. reserves the right to change the contents of this document at any time without prior notice.