

IHSG



5615.49
-31.507
-0.56%

Vol (Mn): 7829
Val (Bn): 6981

LQ45



934.35
-7.81
-0.83%

Sector Indices	Last	Change	Change %
Agriculture	1799.97	(15.45)	(0.86)
Basic Industry	613.93	(0.06)	(0.01)
Consumer	2494.47	0.11	0.00
Finance	894.04	(6.28)	(0.70)
Infrastructure	1130.64	3.05	0.27
Manufacture	1477.19	(6.22)	(0.42)
Mining	1346.14	(18.82)	(1.40)
Misc Industry	1420.88	(32.96)	(2.32)
Property	479.34	(5.88)	(1.23)
Trade	894.36	(7.62)	(0.85)

Source: relitrade next G

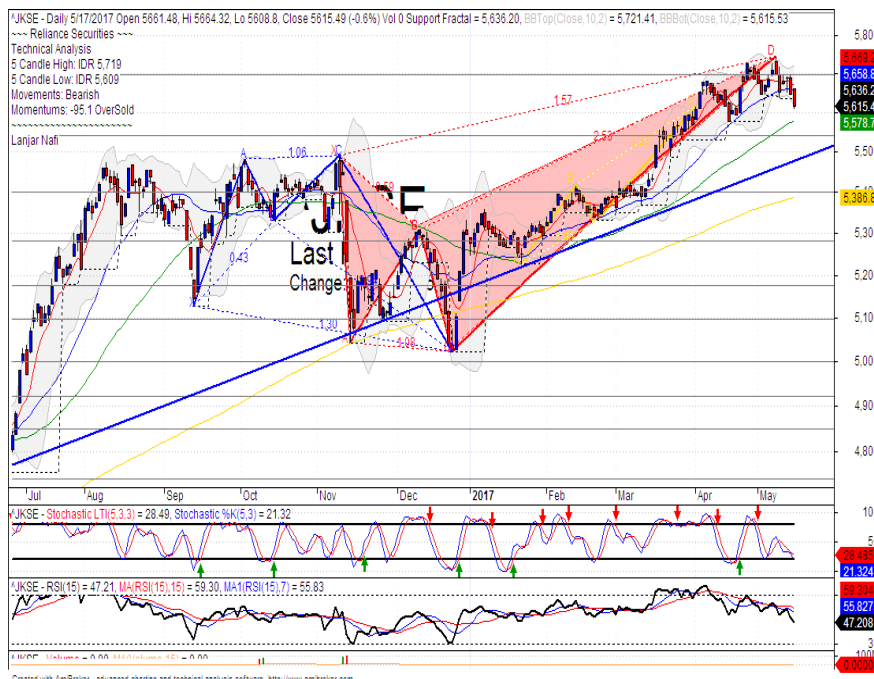
Most Active	Last	Change %	Freq
SRIL	316	0.0	14,534
INDY	835	9.9	10,768
TLKM	4,340	0.0	9,539
KBLI	550	18.5	9,261
BBCA	16,950	(2.6)	8,218

Most Volume	Last	Change %	M share
MYRX	130	(0.8)	10,809
RIMO	142	(0.7)	6,727
BUMI	352	0.0	4,872
INDY	835	9.9	2,001
KBLI	550	18.5	1,607

Most Value	Last	Change %	Rp Bil
BBCA	16,950	(2.6)	567.45
ASII	8,350	(2.9)	407.78
BBRI	14,100	0.5	358.25
TLKM	4,340	0.0	284.19
BMRI	12,000	0.2	253.26

Source: relitrade next G

IHSG Technical Review



R3	6030
R2	5860
R1	5700
Last	5615
S1	5540
S2	5400
S3	5280

Comment:

Broke the MA25 support level and trying MA50 support level.

Stochastic, bearish consolidations movement at near oversold.

RSI bearish momentum at middle oscillator.

Long term bullish trend movement.

Stop-loss if broke the MA50 support level at 5570. Correction target at 5500 (Bullish trend support level).

ACES



R3	1090
R2	1030
R1	970
Last	965
S1	920
S2	870
S3	810
SPECULATIVE BUY	

Comment:

Rebounded at bullish trend and MA25 support level. Reversal signal.

Stochastic, golden-cross indicators at oversold oscillator. Broad upside potential.

RSI has consolidations momentum at oversold.

Medium term bullish trend movement.

Upside target to resistance level at 1030. Stop-loss if broke the MA25 support level at 920.

INTP



R3	20175
R2	19225
R1	18400
Last	18325
S1	17500
S2	16350
S3	15500
SELL	

Comment:

Bearish harami candlestick pattern. Reversal signal and pulled back resistance level.

Stochastic dead-cross at overbought oscillator.

RSI bearish reversal momentum.

Long term bullish trend movement.

Stop-loss if confirmations the negative signal at 18000. Corrections potential until 16750.

ANTM



R3	860
R2	800
R1	730
Last	705
S1	680
S2	625
S3	565
PARTIAL SELL	

Comment:
 Reached the channeling bearish trend and MA50 resistance level. Reversal signal.

Stochastic limited upside at near overbought.

RSI consolidations momentum at middle.

Medium term bearish trend movement.

Stop-loss level at 690 (pulled back MA50 resistance level).
 Corrections target to 625.

BBCA



R3	19500
R2	18550
R1	17700
Last	16950
S1	16800
S2	16000
S3	15350
TRADING BUY	

Comment:
 Declined significant and arrived at MA50 support level. Speculative phase.

Stochastic at oversold oscillator.

RSI bearish momentum after pulled back the MA14 of momentum.

Medium term bullish trend movement.

Upside if rebounded after touching the MA50 support level at 17600. Stop-loss if broke the MA50 at 16700.

Stocks	S2	S1	Closing Price	R1	R2	Technical Notes	Rec	Stop Loss	Rec Buy Prc	Target Price
Plantation										
AALI	13,000	14,000	14,425	14,900	15,850	Pulled back MA50	S	14,200		
LSIP	1,405	1,475	1,490	1,535	1,650	Bearish momentum	S	1,470		
Mining										
INCO	1,680	1,800	1,910	1,965	2,120	Consolidations	TB	1,965		1,965
Consumer										
UNVR	44,000	46,000	47,750	47,800	50,300	Bearish harami	PS	47,500		
INDF	7,250	7,900	8,475	8,500	9,125	Bearish momentum	S	8,300		
KLBF	1,420	1,490	1,500	1,540	1,600	Oversold	W	1,500		
Trading										
ACES	870	920	965	970	1,030	Rebounded at MA25	TB	910		1,015
AKRA	5,800	6,100	6,275	6,350	6,600	Arrived at Bullish trend support	TB	6,200		6,650
UNTR	21,050	22,500	23,100	24,000	25,325	Oversold	W	23,000		
Property & Construction										
LPCK	4,160	4,320	4,370	4,460	4,600	Bearish momentum	S	4,310		
WIKA	1,990	2,200	2,250	2,400	2,600	Double bottom	TB	2,200		2,380
BSDE	1,550	1,630	1,700	1,720	1,830	Bearish momentum	S	1,620		
WSKT	2,120	2,260	2,300	2,410	2,600	Bullish momentum	B	2,270	2,300	2,410
ADHI	1,955	2,070	2,210	2,200	2,300	Stoch golden-cross	TB	2,180		2,300
Basic Industry & Chemical										
SMGR	8,150	8,725	9,100	9,350	9,900	Overbought	H	9,000		9,300
CPIN	2,850	3,000	3,000	3,210	3,400	Consolidations	W	2,950		
MAIN	950	1,000	1,045	1,065	1,130	Stoch golden-cross	SB	1,010	1,040	1,135
INTP	17,500	18,400	18,325	19,200	20,175	Bearish harami	H	18,300		19,000
Miscellaneous										
SRIL	288	316	316	350	400	Consolidations	W	310		
ASII	7,900	8,250	8,350	8,600	9,000	Broke the support level	W	8,500		
Finance										
BBTN	2,230	2,340	2,430	2,460	2,590	Rebounded at bullish trend	H	2,400		2,500
BMRI	11,450	11,800	12,000	12,200	12,650	Bearish momentum	PS	11,800		
BTPN	2,200	2,340	2,520	2,550	2,770	Stoch golden-cross	TB	2,450		2,650
BJBR	1,750	1,915	1,990	2,140	2,210	Stoch golden-cross	TB	1,910		2,140
BBRI	13,500	14,000	14,100	14,725	15,500	Bearish momentum	S	13,800		
Infrastructure										
TLKM	3,950	4,200	4,340	4,400	4,570	Consolidations	PS	4,300		
PGAS	2,040	2,200	2,290	2,360	2,550	Bearish momentum	W	2,250		

Source : Reliance Sekuritas Indonesia

Analyst Conclusions:

The index has breaks the support level. Corrections indications

Legend :

- B: BUY (allocate till 100% of the weighted capital to accumulate, higher than 50% upside probability)
- SB: SPECULATIVE BUY (allocate 25%-50% of the weighted capital to accumulate, 25%-50% upside probability)
- W: WAIT (wait for proper entry level, do the stop-loss if necessary)
- H: HOLD (hold the portfolio position, aim for the best price to distribute)
- PS: PARTIAL SELL (distribute 25%-50% part of the portfolio, 25%-50% downside probability)
- S: SELL (distribute till 100% of the portfolio, higher than 50% downside probability)
- TB: TRADING BUY (short term or intraday trading within a tight trading range. Highly speculative).

Ticker	Resistance	Price	Support	Weekly	Weekly	Indicator				Moving Average		
	Fractal	5/17/2017	Fractal	High	Low	Stochastic		RSI	B. Band	25 Days	50 Days	200 Days
AALIJK	14,950	14,425	14,200	14,850	14,575	Neutral	Bearish	Neutral	Middle Bands	Under	Under	Under
ACESJK	965	965	900	1,020	965	Neutral	Bearish	Neutral	Middle Bands	Upper	Upper	Upper
ADHIJK	2,290	2,210	2,160	2,240	2,210	Neutral	Bullish	Neutral	Middle Bands	Under	Under	Under
ADROJK	1,885	1,410	1,850	1,565	1,470	Oversold	Bearish	Oversold	Middle Bands	Under	Under	Under
AISAJK	2,370	2,050	2,100	2,290	2,120	Oversold	Bearish	Neutral	Lower Bands	Under	Under	Under
AKRAJK	6,750	6,275	6,225	6,750	6,325	Oversold	Bearish	Neutral	Middle Bands	Under	Under	Under
ANTMJK	715	705	595	730	625	Neutral	Bullish	Neutral	Middle Bands	Upper	Under	Under
APLNJK	240	194	202	206	197	Oversold	Bearish	Oversold	Middle Bands	Under	Under	Under
ASIIJK	9,350	8,350	8,675	8,750	8,675	Neutral	Bearish	Neutral	Lower Bands	Under	Under	Upper
ASRIJK	352	320	334	346	334	Oversold	Bullish	Oversold	Lower Bands	Under	Under	Under
BBCAJK	18,550	16,950	17,750	18,550	17,425	Neutral	Bearish	Neutral	Lower Bands	Under	Upper	Upper
BBKPKJ	645	630	625	645	640	Neutral	Bearish	Neutral	Middle Bands	Under	Upper	Under
BBNIJK	6,450	6,500	6,075	6,750	6,600	Neutral	Bearish	Neutral	Middle Bands	Upper	Upper	Upper
BBRIJK	14,350	14,100	13,725	14,550	14,150	Neutral	Bearish	Neutral	Middle Bands	Upper	Upper	Upper
BBTNJK	2,490	2,430	2,300	2,470	2,330	Oversold	Bullish	Neutral	Middle Bands	Upper	Upper	Upper
BDMNJK	5,025	4,880	4,850	5,075	4,960	Neutral	Bearish	Neutral	Middle Bands	Upper	Upper	Upper
BHITJK	126	124	116	126	121	Neutral	Bullish	Neutral	Upper Bands	Upper	Under	Under
BJBRJK	2,040	1,990	1,960	2,040	2,000	Neutral	Bullish	Neutral	Middle Bands	Under	Under	Under
BJTMJK	720	655	665	700	680	Neutral	Bearish	Neutral	Middle Bands	Under	Upper	Upper
BKSLJK	100	77	76	80	79	Neutral	Bullish	Oversold	Middle Bands	Under	Under	Under
BMRIJK	12,175	12,000	11,925	12,175	12,050	Neutral	Bearish	Neutral	Middle Bands	Upper	Upper	Upper
BMTRJK	710	640	530	710	655	Neutral	Bearish	Neutral	Middle Bands	Upper	Upper	Under
BSDEJK	1,865	1,700	1,745	1,820	1,810	Neutral	Bearish	Neutral	Lower Bands	Under	Under	Under
BTPNJK	2,600	2,520	2,460	2,550	2,530	Neutral	Bullish	Neutral	Middle Bands	Under	Under	Under
BWPTJK	394	270	266	288	276	Oversold	Bullish	Neutral	Middle Bands	Under	Under	Upper
CMNPJK	1,420	1,370	1,360	1,400	1,375	Neutral	Bearish	Oversold	Middle Bands	Under	Under	Under
CPINJK	3,400	3,000	2,980	3,100	3,050	Neutral	Bearish	Neutral	Middle Bands	Under	Under	Under
CSAPJK	505	474	440	500	476	Neutral	Bearish	Neutral	Middle Bands	Upper	Upper	Upper
CTRAJK	1,320	1,125	1,150	1,195	1,165	Neutral	Bearish	Neutral	Middle Bands	Under	Under	Under
DILDJK	440	412	404	424	414	Neutral	Bullish	Neutral	Middle Bands	Under	Under	Under
EXCLJK	3,180	3,080	3,030	3,180	3,070	Neutral	Bearish	Upper	Middle Bands	Upper	Upper	Upper
GGRMJK	68,575	70,100	69,500	74,000	71,350	Neutral	Bearish	Neutral	Middle Bands	Upper	Upper	Upper
GIAAJK	360	344	340	354	346	Oversold	Bullish	Neutral	Middle Bands	Under	Under	Under
GJTLJK	1,075	1,040	1,010	1,075	1,050	Neutral	Bearish	Neutral	Middle Bands	Under	Under	Under
HEXAJK	4,600	3,980	3,810	4,000	3,930	Neutral	Bullish	Neutral	Middle Bands	Under	Under	Upper
HRUMJK	2,650	2,020	1,970	2,270	2,090	Oversold	Bullish	Oversold	Middle Bands	Under	Under	Upper
ICBPJK	8,750	8,700	8,500	8,750	8,675	Neutral	Bullish	Neutral	Middle Bands	Upper	Upper	Under
IMASJK	1,150	1,130	1,105	1,150	1,125	Neutral	Bearish	Neutral	Middle Bands	Under	Under	Under
INCOJK	2,300	1,910	1,865	2,000	1,910	Neutral	Bullish	Neutral	Middle Bands	Under	Under	Under
INDFJK	8,575	8,475	8,300	8,525	8,500	Neutral	Bullish	Neutral	Middle Bands	Upper	Upper	Upper
INDYJK	1,320	835	690	1,190	840	Oversold	Bullish	Neutral	Middle Bands	Upper	Upper	Upper
INTAJK	472	358	282	362	348	Overbought	Bearish	Neutral	Middle Bands	Under	Under	Upper
INTPJK	17,075	18,325	15,800	18,650	16,900	Overbought	Bullish	Overbought	Upper Bands	Upper	Upper	Upper
ITMGJK	19,100	14,850	14,500	17,525	15,200	Oversold	Bullish	Oversold	Middle Bands	Under	Under	Under
JFPAJK	1,580	1,260	1,040	1,265	1,100	Neutral	Bullish	Neutral	Middle Bands	Under	Under	Under
JSMRJK	4,850	4,800	4,660	4,850	4,790	Neutral	Bullish	Neutral	Middle Bands	Upper	Upper	Upper
KUJAJK	340	322	312	328	322	Neutral	Bullish	Neutral	Middle Bands	Under	Under	Upper
KLBFJK	1,580	1,500	1,515	1,580	1,525	Oversold	Bearish	Neutral	Middle Bands	Under	Under	Under
KRASJK	565	510	500	540	510	Oversold	Bullish	Neutral	Middle Bands	Under	Under	Under
LPCKJK	4,910	4,370	4,450	4,910	4,600	Neutral	Bearish	Neutral	Middle Bands	Under	Under	Under
LPKRJK	850	725	775	830	750	Oversold	Bearish	Neutral	Lower Bands	Under	Under	Under
LPPFJK	15,400	14,800	14,200	15,400	14,825	Neutral	Bullish	Neutral	Middle Bands	Upper	Upper	Under
LSIPJK	1,405	1,490	1,395	1,530	1,450	Overbought	Bearish	Neutral	Middle Bands	Upper	Upper	Under
MAINJK	1,265	1,045	1,020	1,075	1,035	Oversold	Bullish	Oversold	Middle Bands	Under	Under	Under
MAPIJK	6,475	6,100	6,225	6,725	6,200	Neutral	Bearish	Neutral	Middle Bands	Under	Upper	Upper
MASAJK	240	220	226	240	228	Oversold	Bullish	Neutral	Middle Bands	Under	Under	Under
MNCNJK	2,050	1,915	1,905	2,050	1,960	Neutral	Bearish	Neutral	Middle Bands	Upper	Upper	Upper
MPPAJK	1,010	815	815	870	835	Oversold	Bullish	Oversold	Middle Bands	Under	Under	Under
MTLAJK	332	322	322	330	324	Neutral	Bearish	Neutral	Lower Bands	Under	Under	Upper
MYORJK	2,450	2,140	2,000	2,450	2,170	Oversold	Bearish	Neutral	Middle Bands	Upper	Upper	Upper
PGASJK	2,470	2,290	2,340	2,470	2,380	Neutral	Bearish	Neutral	Lower Bands	Under	Under	Under
PTBAJK	13,075	10,575	10,575	11,400	10,950	Oversold	Bearish	Neutral	Middle Bands	Under	Under	Under
RALSJK	1,420	1,345	1,270	1,420	1,365	Neutral	Bearish	Neutral	Middle Bands	Upper	Upper	Upper
ROTIJK	1,670	1,550	1,540	1,740	1,555	Neutral	Bearish	Neutral	Lower Bands	Under	Under	Under
SCMAJK	2,950	2,870	2,830	2,900	2,870	Neutral	Bullish	Neutral	Middle Bands	Upper	Upper	Upper
SGROJK	2,150	2,030	2,000	2,110	2,040	Neutral	Bearish	Neutral	Middle Bands	Under	Under	Upper
SIMPJK	635	600	585	635	620	Neutral	Bearish	Neutral	Middle Bands	Under	Under	Upper
SMCBJK	940	850	870	905	875	Neutral	Bearish	Oversold	Lower Bands	Under	Under	Under
SMGRJK	8,875	9,100	8,600	9,225	8,800	Overbought	Bullish	Neutral	Middle Bands	Upper	Upper	Under
SMRAJK	1,445	1,250	1,330	1,420	1,325	Oversold	Bearish	Neutral	Lower Bands	Under	Under	Under
SRILJK	362	316	282	362	324	Neutral	Bearish	Neutral	Middle Bands	Upper	Under	Upper
SSIAJK	790	640	660	730	670	Oversold	Bearish	Neutral	Lower Bands	Under	Under	Upper
SSMSJK	1,725	1,735	1,630	1,750	1,705	Overbought	Bearish	Neutral	Middle Bands	Upper	Upper	Upper
TLKMJK	4,450	4,340	4,310	4,440	4,380	Neutral	Bearish	Neutral	Middle Bands	Upper	Upper	Upper
TOTLJK	835	750	800	835	760	Neutral	Bearish	Neutral	Lower Bands	Under	Under	Under
UNTRJK	26,325	23,100	24,750	25,500	24,100	Oversold	Bearish	Oversold	Lower Bands	Under	Under	Upper
UNVRJK	44,000	47,750	44,325	48,575	46,450	Overbought	Bearish	Overbought	Middle Bands	Upper	Upper	Upper

Source : Reliance Research

Legend :

- Movement: Bullish and Bearish (Indicator Stochastic)
- Momentum: Oversold, Overbought and Neutral (Indicator RSI)
- Resistance Fractal: Strong Resistance
- Support Fractal: Strong Support
- Green: Good Conditions
- Red: Poor Conditions

HEAD OFFICE

Reliance Building

Jl. Pluit Sakti Raya No. 27AB,
Pluit
Jakarta 14450
T. +62 21 661 7768
F. +62 21 661 9884

RESEARCH DIVISION

Robertus Yanuar Hardy

robertus@reliance-securities.com

Rio Adrianus

rio.adrianus@reliance-securities.com

Lanjar Nafi Taulat I

lanjar@reliance-securities.com

Aji Setiawan

aji@reliance-securities.com

Shanti Dwi Jayanti

santi@reliance-securities.com

Head of Research

Research Analyst

Technical Research Analyst

Associate Research Analyst

Associate Research Analyst

EQUITY DIVISION

Jakarta- Pluit

Jl. Pluit Sakti Raya No. 27AB,
Pluit
Jakarta 14450
T. +62 21 661 7768
F. +62 21 661 9884

Bandung

Jl.Cisangkuy No.58
Bandung 40115
T. +62 22 721 8200
F. +62 22 721 9255

Surabaya - Gubeng

Jl. Bangka No. 22
Surabaya 60281
T. +62 31 501 1128
F. +62 31 503 3196

Makassar

Jl. Boto Lempangan No. 34 J
Makassar- Sulawesi Selatan
T. +62 411 3632388
F. +62 411 3614634

Jakarta - Sudirman

Menara Batavia Ground Floor
Jl.KH.Mas Mansyur Kav 126
Jakarta 10220
T. +62 21 57905455
F. +62 21 57950728

Tasikmalaya

Ruko Tasik Indah Plaza No.21
Jl. KHZ Mustofa No. 345
Tasikmalaya 46121
T. +62 265 345000
F. +62 265 345003

Surabaya - Diponegoro

Jl. Diponegoro No.26D
Surabaya 60261
T. +62 31 567 0388
F. +62 31 561 0528

Medan

Jl. Teuku Amir Hamzah No.40-O
Medan 20117
T. +62 61 6638592
F. +62 61 6638023

Jakarta - Kebon Jeruk

Plaza Kebon Jeruk
Jl.Raya Perjuangan Blok A/2
Jakarta 11530
T. +62 21 532 4074
F. +62 21 536 2157

Malang

Jl. Guntur No. 19
Malang 65112
T. +62 341 347 611
F. +62 341 347 615

Bali - Denpasar

Dewata Square Blok A3
Jl. Letda Tantular Renon
Denpasar 802361
T. +62 361 225099
F. +62 361 245099

Tangerang

Jl. Pahlawan Seribu Ruko BSD
Sektor 7 Blok RK kav. 9
Tangerang 15310
T. +62 21 5387495
F. +62 21 5387494

Pekanbaru

Jl. Jendral Sudirman No.73
Pekanbaru-Riau
T. +62 761 848414
F. +62 761 849456

Pontianak

Jl. MT Haryono No. 6
Pontianak 78121
T. +62 561 575674
F. +62 561 575670

Jakarta - Centro

Ruko Centro Residence Kav. 4-5
Tower C Lt. 1 No. 26-29
Jl. Macan, Daan Mogot
Jakarta 14450
T. +62 21 56945227
F. +62 21 56945226

Solo

Jl. Slamet Riyadi 330^a
Solo 57145
T. +62 271 736599
F. +62 271 733478

Balikpapan

Ruko Bukit Damai Indah
Blok I, No. 3, Rt.34
Jl. MT. Haryono, Gunung
Bahagia, Balikpapan Selatan
76114
T. +62 542 746313
F. +62 542 746317

IDX CORNER & INVESTMENT GALLERY**President University**

Resto Plaza 1F - Jababeka
Education Park
Jl. Ki Hajar Dewantara Raya
Cikarang - Bekasi 17550
T. +62 21 89106030

**Universitas Siliwangi
Tasikmalaya**

Jl. Siliwangi No. 24
Tasikmalaya 46151
T. +62 265 323685
F. +62 265 323534

Politeknik Kediri

Jl. Mayor Bismo No. 27
Kediri 64121
T. +62 354 683128
F. +62 354 683128

**Universitas Muhammadiyah
Sidoarjo**

Jl. Majapahit 666 B
Sidoarjo, Jawa Timur
T. +62 31 8945444
F. +62 31 8949333

**Universitas Tanjungpura
Pontianak**

Jl. Jendral Ahmad Yani
Pontianak 78124
T. +62 561 743465
F. +62 561 766840

**Universitas Pesantren Tinggi
Darul Ulum**

Kompleks Pp Darul Ulu,
Peterongan
Jombang, Jawa Timur 60281
T. +62 321 873655
F. +62 321 875771

STIE "AUB" Surakarta

Jl. Mr. Sartono 97, Cengklik
Nusukan, Surakarta 57135
T. +62 271 854803
F. +62 271 853084

Universitas Surabaya

Jl. Raya Kalirungkut
Surabaya 60293
T. +62 31 298 1203
F. +62 31 298 1204

**Universitas Muhammadiyah
Gresik**

Jl. Sumatra 101 GKB
Gresik 61121
T. +62 31 395 1414
F. +62 31 395 2585

Universitas Negeri Malang

Jl. Surabaya No. 6
Malang 65145
T. +62 341 585914
F. +62 341 55288

**Universitas Muhammadiyah
Malang**

Jl. Raya Tlogomas 246
Malang 65144
T. +62 341 464318-9
F. +62 341 460782

FSEI IAIN Antasari

Jl. Ahmad Yani Km. 4,5
Banjarmasin
T. + 62 511 3265783

STIE Malangkececwara

Jl. Terusan Candi Kalasan
Malang 65142
T. +62 341 491813
F. +62 341 495619

STIESIA Surabaya

Jl. Menur Pumpungan 30
Surabaya
T. +62 31 5947505
F. +62 31 5932218

**Universitas 17 Agustus
1945 Banyuwangi**

Jl. Adi Sucipto 26
Banyuwangi, Jawa Timur
T. +62 333 419613
F. +62 333 419163

STIE Tri Bhakti

Jl. Teuku Umar No. 24
Cut Meutia Setiakawan,
Bekasi
T. +62 21 82429400,
82429500
F. +62 271 726156

**Universitas Islam
Kalimantan**

Jl. Adiyaksa No. 2, Kayu
Tangi, Banjarmasin
T. + 62 511 3303871
F. + 62 511 3303871

STIKOM Bali

Jalan Puputan No. 86, Renon,
Denpasar
T. +62361 244445
F. +62361 264773

**Universitas Muhammadiyah
Pontianak**

Fakultas Ekonomi UM
Pontianak
Jl. Ahmad Yani, No. 111,
Pontianak 78124
T. +62561 743465
F. +62561 766840

**Universitas Negeri
Makassar**

Fakultas Ekonomi Gedung BT
Lt.2
Jl. A.P. Pettarani, Kampus
UNM, Gunungsari Baru
Makassar 90222
T. +62 411 889464 / 881244
F. +62 411 887604

STIE AAS Surakarta

Jl. Slamet Riyadi No. 361,
Kartasura, Surakarta
T. +62 271 726156
F. +62 271 726156

UPN "Veteran" Yogyakarta

Jl. Babarsari 2, Tambak Bayan
Yogyakarta
T. +62 274 485268
F. +62 274 487147

Disclaimer:

Information, opinions and recommendations contained in this document are presented by PT Reliance Sekuritas Indonesia Tbk. from sources that are considered reliable and dependable. This document is not an offer, invitation or any kind of representations to decide to buy or sell stock. Investment decisions taken based on this document is not the responsibility of PT Reliance Sekuritas Indonesia Tbk. PT Reliance Sekuritas Indonesia Tbk. reserves the right to change the contents of this document at any time without prior notice.