

IHSG



5749.45
-42.439
-0.73%

Vol (Mn): 6037
Val (Bn): 8036

LQ45



960.84
-9.55
-0.98%

Sector	Last	WoW Chg	(%)
Agriculture	1813.73	1.12	0.06%
Basic Industry	623.18	18.95	3.14%
Composite	5791.88	116.67	2.06%
Consumer	2581.04	86.35	3.46%
Finance	934.23	22.35	2.45%
Infrastructure	1164.37	24.08	2.11%
Manufacture	1524.24	43.22	2.92%
Mining	1378.75	28.13	2.08%
Misc Industry	1479.06	13.30	0.91%
Property	490.97	3.72	0.76%
Trade	903.77	-6.44	-0.71%

Source: Bloomberg

International	Last	WoW Chg	(%)
DJIA	20,804.84	-91.77	-0.44%
Nasdaq	6,083.70	-37.53	-0.61%
S&P 500	2,381.73	-9.17	-0.38%
FTSE 100	7,492.38	56.99	0.77%
Nikkei 225	19,678.28	-205.62	-1.03%
Hang Seng	25,387.29	230.95	0.92%
Sanghai Comp	3,411.24	327.73	10.63%

Source: Bloomberg

Exchange Rates	Last	WoW Chg	(%)
USD / IDR	13301	-10.00	-0.08%
US \$ Index	97.33	-1.76	-1.78%
EUR / USD	1.12	0.02	2.16%
USD / JPY	111.27	-2.33	-2.05%
GBP / USD	1.30	0.01	0.42%
USD / CNY	6.89	-0.01	-0.10%
AUD / USD	0.75	0.00	0.48%

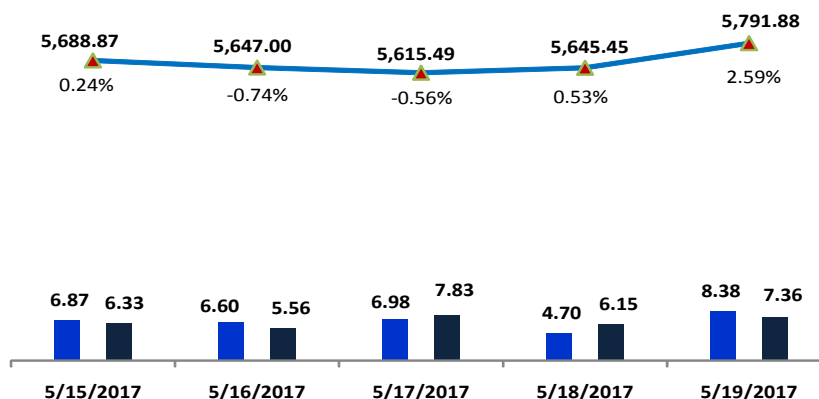
Others	Last	WoW Chg	(%)
VIX:IND	12.41	2.01	19.33%
Baltic Dry	956.00	-58.00	-5.72%

Source: Bloomberg

Monday Recommendation Flashback

Stock	Rec.	05/05/2017 (close)	Stop Loss	Loss	Week's Highest	Date	Potential Gain	Week's Lowest	Date	Potential Gain
AKRA	SB	6,450	6,275	-2.71%	6,700	5/8/2017	3.88%	6,300	5/12/2017	-2.33%
BBRI	PS	13,925	13,750	-1.26%	14,350	5/9/2017	3.05%	13,725	5/12/2017	-1.44%
ELSA	SB	340	330	-2.94%	350	5/8/2017	2.94%	300	5/12/2017	-11.76%
ACES	H	980	905	-7.65%	1,020	5/12/2017	4.08%	945	5/10/2017	-3.57%

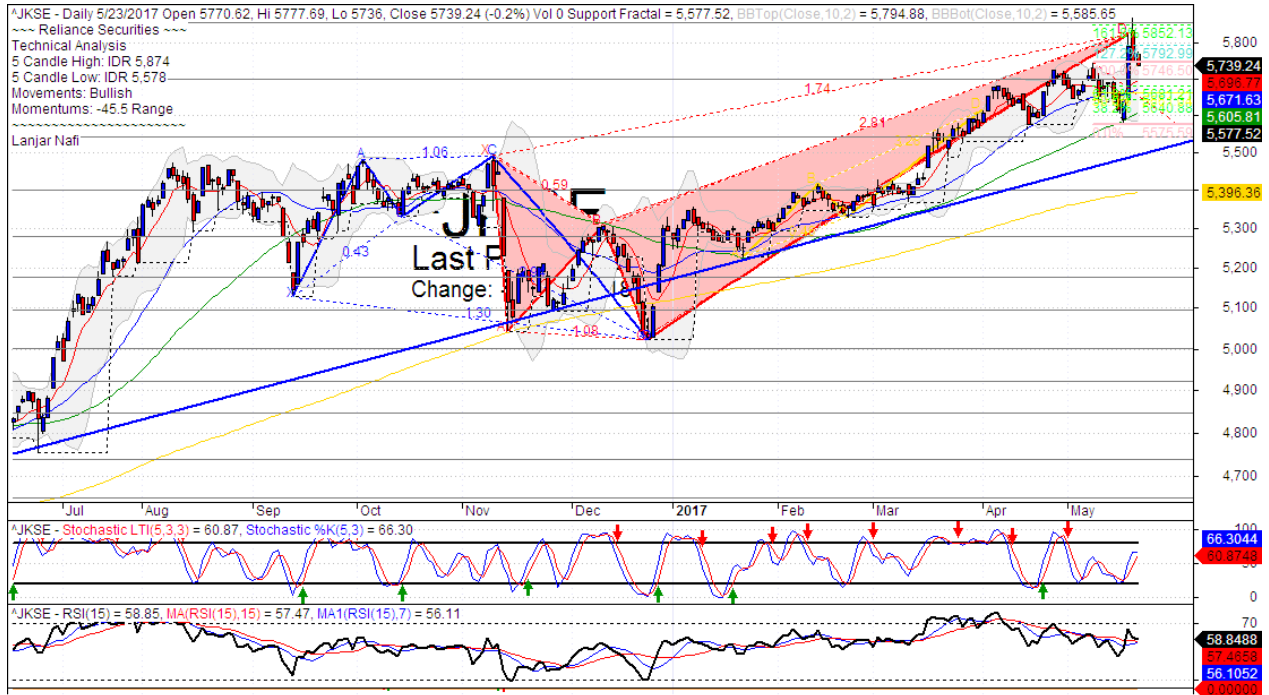
IHSG on the Week (05/15/2017 - 05/19/2017)



LS-27 Close	952.46	942.16	934.35	941.45	970.40
LS-27 % Chg	0.01	-0.01	-0.01	0.01	0.03
Frgn Net Buy (Bn)	-740.79	438.30	-205.35	941.45	-101.13
	211.68	1380.45	728.99	1882.91	869.30

your **reliable** partner | 1

IHSG



Created with AmiBroker - advanced charting and technical analysis software. <http://www.amibroker.com>

S1	5700	R1	5860
S2	5545	R2	6030
S3	5400	R3	6210

Comment:

IHSG surged significant after rebounded at MA50 support level last week. Trading range 5578–5874.

In the first season of the week. The index has distributions phase with pulled back confirmations and trying MA7 support level.

Stochastic, consolidations movement at near oversold oscillator. RSI indicator still bearish signal after reached the overbought momentum.

Long term bullish trend movement.

Stop-loss level if broke the MA7 support level at 5665. Downside potential until 5605 (MA50 support level).

Property Index



Created with AmiBroker - advanced charting and technical analysis software. <http://www.amibroker.com>

S1	494	R1	514
S2	477	R2	530
S3	462	R3	547

Comment:

Property index surged significant after rebounded at support level. Trading range 475–502.

By the first session today, the index has reached the bearish trend and MA50 resistance level.

Stochastic has reached the overbought oscillator and RSI indications bearish consolidations at middle state.

Long term bearish trend movement.

This week resistance at 500 (MA50 resistance level). Stop-loss position if pulled back confirmations with broke the support level at 4920

HEAD OFFICE

Reliance Building

Jl. Pluit Sakti Raya No. 27AB,
Pluit
Jakarta 14450
T. +62 21 661 7768
F. +62 21 661 9884

RESEARCH DIVISION

Robertus Yanuar Hardy

robertus@reliance-securities.com

Rio Adrianus

rio.adrianus@reliance-securities.com

Lanjar Nafi Taulat I

lanjar@reliance-securities.com

Aji Setiawan

aji@reliance-securities.com

Shanti Dwi Jayanti

santi@reliance-securities.com

Senior Analyst

Research Analyst

Technical Research Analyst

Associate Research Analyst

Associate Research Analyst

EQUITY DIVISION

Jakarta- Pluit

Jl. Pluit Sakti Raya No. 27AB,
Pluit
Jakarta 14450
T. +62 21 661 7768
F. +62 21 661 9884

Bandung

Jl.Cisangkuy No.58
Bandung 40115
T. +62 22 721 8200
F. +62 22 721 9255

Surabaya - Gubeng

Jl. Bangka No. 22
Surabaya 60281
T. +62 31 501 1128
F. +62 31 503 3196

Makassar

Jl. Boto Lempangan No. 34 J
Makassar- Sulawesi Selatan
T. +62 411 3632388
F. +62 411 3614634

Jakarta - Sudirman

Menara Batavia Ground Floor
Jl.KH.Mas Mansyur Kav 126
Jakarta 10220
T. +62 21 57905455
F. +62 21 57950728

Tasikmalaya

Ruko Tasik Indah Plaza No.21
Jl. KHZ Mustofa No. 345
Tasikmalaya 46121
T. +62 265 345000
F. +62 265 345003

Surabaya - Diponegoro

Jl. Diponegoro No.26D
Surabaya 60261
T. +62 31 567 0388
F. +62 31 561 0528

Medan

Jl. Teuku Amir Hamzah No.40-O
Medan 20117
T. +62 61 6638592
F. +62 61 6638023

Jakarta - Kebon Jeruk

Plaza Kebon Jeruk
Jl.Raya Perjuangan Blok A/2
Jakarta 11530
T. +62 21 532 4074
F. +62 21 536 2157

Malang

Jl. Guntur No. 19
Malang 65112
T. +62 341 347 611
F. +62 341 347 615

Bali - Denpasar

Dewata Square Blok A3
Jl. Letda Tantular Renon
Denpasar 802361
T. +62 361 225099
F. +62 361 245099

Tangerang

Jl. Pahlawan Seribu Ruko BSD
Sektor 7 Blok RK kav. 9
Tangerang 15310
T. +62 21 5387495
F. +62 21 5387494

Pekanbaru

Jl. Jendral Sudirman No.73
Pekanbaru-Riau
T. +62 761 848414
F. +62 761 849456

Pontianak

Jl. MT Haryono No. 6
Pontianak 78121
T. +62 561 575674
F. +62 561 575670

Jakarta - Centro

Ruko Centro Residence Kav. 4-5
Tower C Lt. 1 No. 26-29
Jl. Macan, Daan Mogot
Jakarta 14450
T. +62 21 56945227
F. +62 21 56945226

Solo

Jl. Slamet Riyadi 330^a
Solo 57145
T. +62 271 736599
F. +62 271 733478

Balikpapan

Ruko Bukit Damai Indah
Blok I, No. 3, Rt.34
Jl. MT. Haryono, Gunung
Bahagia, Balikpapan Selatan
76114
T. +62 542 746313
F. +62 542 746317

IDX CORNER & INVESTMENT GALLERY

President University

Resto Plaza 1F - Jababeka
Education Park
Jl. Ki Hajar Dewantara Raya
Cikarang - Bekasi 17550
T. +62 21 89106030

Universitas Siliwangi Tasikmalaya

Jl. Siliwangi No. 24
Tasikmalaya 46151
T. +62 265 323685
F. +62 265 323534

Politeknik Kediri

Jl. Mayor Bismo No. 27
Kediri 64121
T. +62 354 683128
F. +62 354 683128

Universitas Muhammadiyah Sidoarjo

Jl. Majapahit 666 B
Sidoarjo, Jawa Timur
T. +62 31 8945444
F. +62 31 8949333

Universitas Tanjungpura Pontianak

Jl. Jendral Ahmad Yani
Pontianak 78124
T. +62 561 743465
F. +62 561 766840

Universitas Pesantren Tinggi Darul Ulum

Kompleks Pp Darul Ulu,
Peterongan
Jombang, Jawa Timur 60281
T. +62 321 873655
F. +62 321 875771

STIE "AUB" Surakarta

Jl. Mr. Sartono 97, Cengklik
Nusukan, Surakarta 57135
T. +62 271 854803
F. +62 271 853084

Universitas Surabaya

Jl. Raya Kalirungkut
Surabaya 60293
T. +62 31 298 1203
F. +62 31 298 1204

Universitas Muhammadiyah Gresik

Jl. Sumatra 101 GKB
Gresik 61121
T. +62 31 395 1414
F. +62 31 395 2585

Universitas Negeri Malang

Jl. Surabaya No. 6
Malang 65145
T. +62 341 585914
F. +62 341 55288

Universitas Muhammadiyah Malang

Jl. Raya Tlogomas 246
Malang 65144
T. +62 341 464318-9
F. +62 341 460782

FSEI IAIN Antasari

Jl. Ahmad Yani Km. 4,5
Banjarmasin
T. + 62 511 3265783

STIE Malangkececwara

Jl. Terusan Candi Kalasan
Malang 65142
T. +62 341 491813
F. +62 341 495619

STIESIA Surabaya

Jl. Menur Pumpungan 30
Surabaya
T. +62 31 5947505
F. +62 31 5932218

Universitas 17 Agustus 1945 Banyuwangi

Jl. Adi Sucipto 26
Banyuwangi, Jawa Timur
T. +62 333 419613
F. +62 333 419163

STIE Tri Bhakti

Jl. Teuku Umar No. 24
Cut Meutia Setiakawan,
Bekasi
T. +62 21 82429400,
82429500
F. +62 271 726156

Universitas Islam Kalimantan

Jl. Adiyaksa No. 2, Kayu
Tangi, Banjarmasin
T. + 62 511 3303871
F. + 62 511 3303871

STIKOM Bali

Jalan Puputan No. 86, Renon,
Denpasar
T. +62361 244445
F. +62361 264773

Universitas Muhammadiyah Pontianak

Fakultas Ekonomi UM
Pontianak
Jl. Ahmad Yani, No. 111,
Pontianak 78124
T. +62561 743465
F. +62561 766840

Universitas Negeri Makassar

Fakultas Ekonomi Gedung BT
Lt.2
Jl. A.P. Pettarani, Kampus
UNM, Gunungsari Baru
Makassar 90222
T. +62 411 889464 / 881244
F. +62 411 887604

STIE AAS Surakarta

Jl. Slamet Riyadi No. 361,
Kartasura, Surakarta
T. +62 271 726156
F. +62 271 726156

UPN "Veteran" Yogyakarta

Jl. Babarsari 2, Tambak Bayan
Yogyakarta
T. +62 274 485268
F. +62 274 487147

Disclaimer:

Information, opinions and recommendations contained in this document are presented by PT Reliance Sekuritas Indonesia Tbk. from sources that are considered reliable and dependable. This document is not an offer, invitation or any kind of representations to decide to buy or sell stock. Investment decisions taken based on this document is not the responsibility of PT Reliance Sekuritas Indonesia Tbk. PT Reliance Sekuritas Indonesia Tbk. reserves the right to change the contents of this document at any time without prior notice.