

Weekly IHSG



5829.71
106.07
1.85%
Vol (Mn): 18.63
Val (Bn): 34.67
F Net B (Bn): (2,318)

Weekly LQ-45



977.62
16.95
1.76%

Sector	Last	WoW Chg	(%)
Agriculture	1801.65	44.04	2.51%
Basic Industry	618.66	9.14	1.50%
Composite	5829.71	106.07	1.85%
Consumer	2554.38	26.38	1.04%
Finance	949.73	22.09	2.38%
Infrastructure	1174.06	28.87	2.52%
Manufacture	1515.96	19.75	1.32%
Mining	1404.81	-1.38	-0.10%
Misc Industry	1498.26	30.02	2.04%
Property	493.72	10.77	2.23%
Trade	919.99	18.38	2.04%

Source: Bloomberg

International	Last	WoW Chg	(%)
DJIA	21,349.63	-34.65	-0.16%
Nasdaq	6,140.42	-11.34	-0.18%
S&P 500	2,423.41	-9.74	-0.40%
FTSE 100	7,312.72	-150.82	-2.02%
Nikkei 225	20,055.80	112.54	0.56%
Hang Seng	25,811.19	184.70	0.72%
Sanghai Comp	3,649.11	525.94	16.84%

Source: Bloomberg

Exchange Rates	Last	WoW Chg	(%)
USD / IDR	13341	51.00	0.38%
US \$ Index	95.77	-1.40	-1.44%
EUR / USD	1.14	0.02	1.91%
USD / JPY	112.51	1.50	1.35%
GBP / USD	1.30	0.02	1.78%
USD / CNY	6.79	-0.02	-0.35%
AUD / USD	0.77	0.00	0.64%

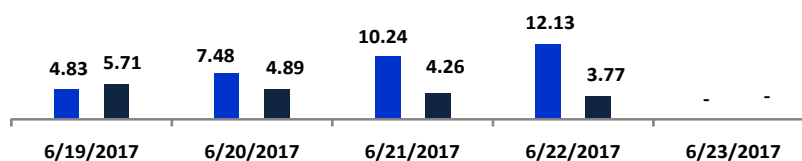
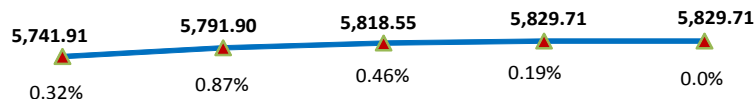
Others	Last	WoW Chg	(%)
VIX:IND	11.18	0.80	7.71%
Baltic Dry	901.00	50.00	5.88%

Source: Bloomberg

Monday Recommendation Flashback

Stock	Rec.	06/16/2017 (close)	Stop Loss	Loss	Week's Highest	Date	Potential Gain	Week's Lowest	Date	Potential Gain
SMBR	SB	3,060	3,000	-1.96%	3,250	6/20/2017	6.21%	2,870	6/20/2017	-6.21%
SCMA	PS	2,750	2,680	-2.55%	2,810	6/19/2017	2.18%	2,560	6/22/2017	-6.91%
PTPP	PS	3,140	3,070	-2.23%	3,210	6/21/2017	2.23%	3,100	6/22/2017	-1.27%
INAF	SB	3,050	3,050	0.00%	3,120	6/19/2017	2.30%	2,920	6/22/2017	-4.26%

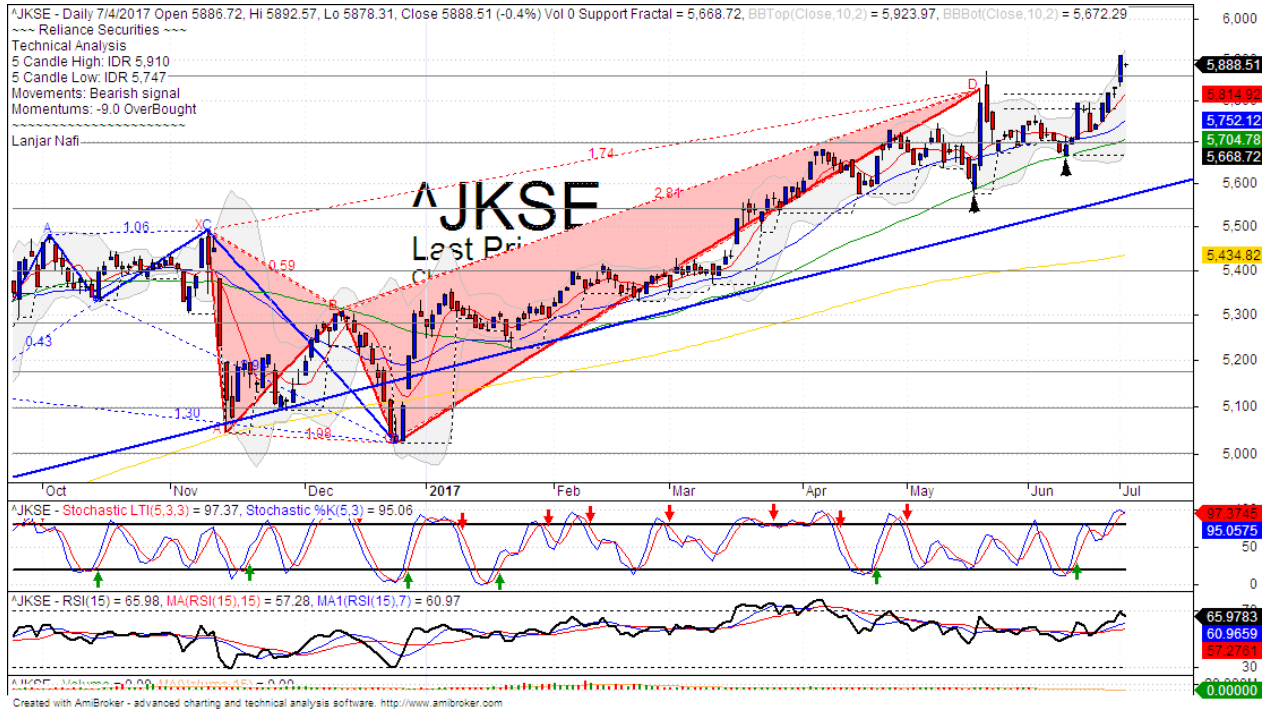
IHSG on the Week (06/19/2017 - 06/23/2017)



	963.87	974.33	978.63	977.62	977.62
LS-27 Close	963.87	974.33	978.63	977.62	977.62
LS-27 % Chg	0.00	0.01	0.00	0.00	0.00
Frgn Net Buy (Bn)	-51.20	-480.57	194.66	-1981.00	0.00
	912.67	493.77	1173.29	-1003.38	977.62

your **reliable** partner | 1

IHSG



S1	5860	R1	6030
S2	5700	R2	6210
S3	5545	R3	6400

Comment:

IHSG trying to break the all time high level last week after broke the upper Bollinger bands. Trading range 5747-5910.

In the first season of the week. The index has broke the all time high level and distributions indications.

Stochastic, dead-cross formations at near overbought. Bearish consolidations. RSI indications downtrend of momentum from April.

Long term bullish trend movement.

Stop-loss level if broke the support level at 5850. Downside potential until MA25 support level at 5750.

Infrastructure Index



S1	1200	R1	1245
S2	1150	R2	1280
S3	1100	R3	1370

Comment:

Infrastructure index surged significant after rebounded at bullish trend support level last week. Trading range 1152–1219.

By the first session today, the index has arrived at channeling bullish trend resistance level

Stochastic has dead-cross at overbought oscillator. Broad downside potential. RSI indicator also bearish reversal momentum at overbought.

Long term bullish trend movement.

This week resistance at 1220 (channeling uptrend resistance level) Stop-loss at 1190 if broke the support level the index will decline until bullish trend support level and MA25 at 1150.

TLKM



S1	4570	R1	4800
S2	4400	R2	5050
S3	4200	R3	5300

Comment:

TLKM surged significant after rebounded at bullish trend support level last week. Trading range 4400–4790.

By the first session this week, The price reached the target level at 161.8% Fibonacci ratios.

Stochastic, dead-cross indications at overbought oscillator. RSI indicator bearish reversal momentum at overbought.

Long term bearish movement.

Upside scenario: (Probability 20%)

If the price has broke the resistance level at 4770. Upside target to 5050.

Downside scenario: (Probability 80%)

Stop loss level if pulled back target level and distributions phase at 4700. Downside potential until bullish trend line at 4480.

HEAD OFFICE

Reliance Building

Jl. Pluit Sakti Raya No. 27AB,
Pluit
Jakarta 14450
T. +62 21 661 7768
F. +62 21 661 9884

RESEARCH DIVISION

Robertus Yanuar Hardy

robertus@reliance-securities.com

Rio Adrianus

rio.adrianus@reliance-securities.com

Lanjar Nafi Taulat I

lanjar@reliance-securities.com

Aji Setiawan

aji@reliance-securities.com

Shanti Dwi Jayanti

santi@reliance-securities.com

Senior Analyst

Research Analyst

Technical Research Analyst

Associate Research Analyst

Associate Research Analyst

EQUITY DIVISION

Jakarta- Pluit

Jl. Pluit Sakti Raya No. 27AB,
Pluit
Jakarta 14450
T. +62 21 661 7768
F. +62 21 661 9884

Bandung

Jl.Cisangkuy No.58
Bandung 40115
T. +62 22 721 8200
F. +62 22 721 9255

Surabaya - Gubeng

Jl. Bangka No. 22
Surabaya 60281
T. +62 31 501 1128
F. +62 31 503 3196

Makassar

Jl. Boto Lempangan No. 34 J
Makassar- Sulawesi Selatan
T. +62 411 3632388
F. +62 411 3614634

Jakarta - Sudirman

Menara Batavia Ground Floor
Jl.KH.Mas Mansyur Kav 126
Jakarta 10220
T. +62 21 57905455
F. +62 21 57950728

Tasikmalaya

Ruko Tasik Indah Plaza No.21
Jl. KHZ Mustofa No. 345
Tasikmalaya 46121
T. +62 265 345000
F. +62 265 345003

Surabaya - Diponegoro

Jl. Diponegoro No.26D
Surabaya 60261
T. +62 31 567 0388
F. +62 31 561 0528

Medan

Jl. Teuku Amir Hamzah No.40-O
Medan 20117
T. +62 61 6638592
F. +62 61 6638023

Jakarta - Kebon Jeruk

Plaza Kebon Jeruk
Jl.Raya Perjuangan Blok A/2
Jakarta 11530
T. +62 21 532 4074
F. +62 21 536 2157

Malang

Jl. Guntur No. 19
Malang 65112
T. +62 341 347 611
F. +62 341 347 615

Bali - Denpasar

Dewata Square Blok A3
Jl. Letda Tantular Renon
Denpasar 802361
T. +62 361 225099
F. +62 361 245099

Tangerang

Jl. Pahlawan Seribu Ruko BSD
Sektor 7 Blok RK kav. 9
Tangerang 15310
T. +62 21 5387495
F. +62 21 5387494

Pekanbaru

Jl. Jendral Sudirman No.73
Pekanbaru-Riau
T. +62 761 848414
F. +62 761 849456

Pontianak

Jl. MT Haryono No. 6
Pontianak 78121
T. +62 561 575674
F. +62 561 575670

Jakarta - Centro

Ruko Centro Residence Kav. 4-5
Tower C Lt. 1 No. 26-29
Jl. Macan, Daan Mogot
Jakarta 14450
T. +62 21 56945227
F. +62 21 56945226

Solo

Jl. Slamet Riyadi 330^a
Solo 57145
T. +62 271 736599
F. +62 271 733478

Balikpapan

Ruko Bukit Damai Indah
Blok I, No. 3, Rt.34
Jl. MT. Haryono, Gunung
Bahagia, Balikpapan Selatan
76114
T. +62 542 746313
F. +62 542 746317

IDX CORNER & INVESTMENT GALLERY**President University**

Resto Plaza 1F - Jababeka
Education Park
Jl. Ki Hajar Dewantara Raya
Cikarang - Bekasi 17550
T. +62 21 89106030

**Universitas Siliwangi
Tasikmalaya**

Jl. Siliwangi No. 24
Tasikmalaya 46151
T. +62 265 323685
F. +62 265 323534

Politeknik Kediri

Jl. Mayor Bismo No. 27
Kediri 64121
T. +62 354 683128
F. +62 354 683128

**Universitas Muhammadiyah
Sidoarjo**

Jl. Majapahit 666 B
Sidoarjo, Jawa Timur
T. +62 31 8945444
F. +62 31 8949333

**Universitas Tanjungpura
Pontianak**

Jl. Jendral Ahmad Yani
Pontianak 78124
T. +62 561 743465
F. +62 561 766840

**Universitas Pesantren Tinggi
Darul Ulum**

Kompleks Pp Darul Ulu,
Peterongan
Jombang, Jawa Timur 60281
T. +62 321 873655
F. +62 321 875771

STIE "AUB" Surakarta

Jl. Mr. Sartono 97, Cengklik
Nusukan, Surakarta 57135
T. +62 271 854803
F. +62 271 853084

Universitas Surabaya

Jl. Raya Kalirungkut
Surabaya 60293
T. +62 31 298 1203
F. +62 31 298 1204

**Universitas Muhammadiyah
Gresik**

Jl. Sumatra 101 GKB
Gresik 61121
T. +62 31 395 1414
F. +62 31 395 2585

Universitas Negeri Malang

Jl. Surabaya No. 6
Malang 65145
T. +62 341 585914
F. +62 341 55288

**Universitas Muhammadiyah
Malang**

Jl. Raya Tlogomas 246
Malang 65144
T. +62 341 464318-9
F. +62 341 460782

FSEI IAIN Antasari

Jl. Ahmad Yani Km. 4,5
Banjarmasin
T. + 62 511 3265783

STIE Malangkececwara

Jl. Terusan Candi Kalasan
Malang 65142
T. +62 341 491813
F. +62 341 495619

STIESIA Surabaya

Jl. Menur Pumpungan 30
Surabaya
T. +62 31 5947505
F. +62 31 5932218

**Universitas 17 Agustus
1945 Banyuwangi**

Jl. Adi Sucipto 26
Banyuwangi, Jawa Timur
T. +62 333 419613
F. +62 333 419163

STIE Tri Bhakti

Jl. Teuku Umar No. 24
Cut Meutia Setiakawan,
Bekasi
T. +62 21 82429400,
82429500
F. +62 271 726156

**Universitas Islam
Kalimantan**

Jl. Adiyaksa No. 2, Kayu
Tangi, Banjarmasin
T. + 62 511 3303871
F. + 62 511 3303871

STIKOM Bali

Jalan Puputan No. 86, Renon,
Denpasar
T. +62361 244445
F. +62361 264773

**Universitas Muhammadiyah
Pontianak**

Fakultas Ekonomi UM
Pontianak
Jl. Ahmad Yani, No. 111,
Pontianak 78124
T. +62561 743465
F. +62561 766840

**Universitas Negeri
Makassar**

Fakultas Ekonomi Gedung BT
Lt.2
Jl. A.P. Pettarani, Kampus
UNM, Gunungsari Baru
Makassar 90222
T. +62 411 889464 / 881244
F. +62 411 887604

STIE AAS Surakarta

Jl. Slamet Riyadi No. 361,
Kartasura, Surakarta
T. +62 271 726156
F. +62 271 726156

UPN "Veteran" Yogyakarta

Jl. Babarsari 2, Tambak Bayan
Yogyakarta
T. +62 274 485268
F. +62 274 487147

Disclaimer:

Information, opinions and recommendations contained in this document are presented by PT Reliance Sekuritas Indonesia Tbk. from sources that are considered reliable and dependable. This document is not an offer, invitation or any kind of representations to decide to buy or sell stock. Investment decisions taken based on this document is not the responsibility of PT Reliance Sekuritas Indonesia Tbk. PT Reliance Sekuritas Indonesia Tbk. reserves the right to change the contents of this document at any time without prior notice.