

Weekly IHSG



5831.80
17.01
0.29%

Vol (Mn): 23.12
Val (Bn): 30.63
F Net B (Bn): (1,341)

Weekly LQ-45



978.14
1.02
0.10%

International	Last	WoW Chg	(%)
DJIA	21,637.74	223.40	1.04%
Nasdaq	6,312.47	159.39	2.59%
S&P 500	15,174.81	12749.63	525.72%
FTSE 100	7,400.11	49.19	0.67%
Nikkei 225	20,118.86	37.88	0.19%
Hang Seng	26,468.85	929.77	3.64%
Sanghai Comp	3,663.56	9.51	0.26%

Source: Bloomberg

Sector	Last	WoW Chg	(%)
Agriculture	1793.85	0.82	0.05%
Basic Industry	622.75	-1.33	-0.21%
Composite	5831.80	17.00	0.29%
Consumer	2525.14	18.05	0.72%
Finance	959.48	2.23	0.23%
Infrastructure	1185.62	-2.83	-0.24%
Manufacture	1502.01	4.38	0.29%
Mining	1430.22	27.78	1.98%
Misc Industry	1470.20	-8.41	-0.57%
Property	491.95	-3.82	-0.77%
Trade	912.60	9.13	1.01%

Source: Bloomberg

Exchange Rates	Last	WoW Chg	(%)
USD / IDR	13318	-80.00	-0.60%
US \$ Index	95.20	-0.85	-0.89%
EUR / USD	1.14	0.01	0.44%
USD / JPY	112.57	-1.67	-1.46%
GBP / USD	1.31	0.02	1.47%
USD / CNY	6.77	-0.03	-0.41%
AUD / USD	0.78	0.02	2.74%

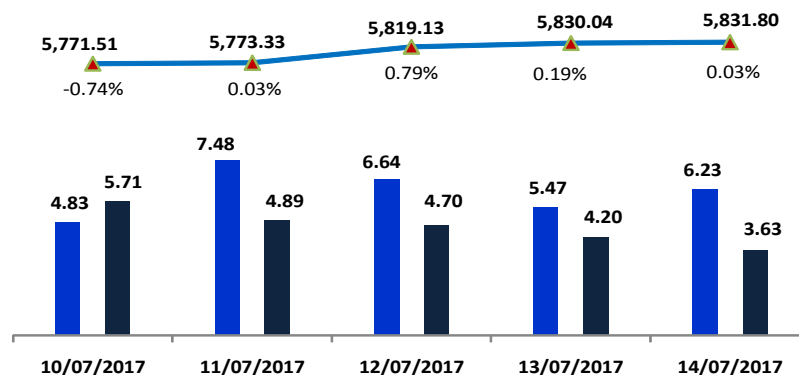
Others	Last	WoW Chg	(%)
VIX:IND	9.51	-1.68	-15.01%
Baltic Dry	900.00	78.00	9.49%

Source: Bloomberg

Monday Recommendation Flashback

Stock	Rec.	06/16/2017 (close)	Stop Loss	Loss	Week's Highest	Date	Potential Gain	Week's Lowest	Date	Potential Gain
BBTN	TB	2,500	2,430	-2.80%	2,530	7/13/2017	1.20%	2,320	7/11/2017	-7.20%
KAEF	SB	2,850	2,760	-3.16%	3,110	7/14/2017	9.12%	2,790	7/11/2017	-2.11%
ISAT	S	6,000	5,700	-5.00%	6,375	7/12/2017	6.25%	6,000	7/10/2017	0.00%
SCMA	SB	2,350	2,270	-3.40%	2,450	7/10/2017	4.26%	2,190	7/14/2017	-6.81%

IHSG on the Week (07/10/2017 - 07/14/2017)



LS-27 Close	967.29	966.63	976.18	978.18	978.14
LS-27 % Chg	-0.01	0.00	0.01	0.00	0.00
Frgn Net Buy (Bn)	-51.20	-480.57	194.66	-1981.00	977.12
	916.08	486.06	1170.85	-1002.82	1955.26

your **reliable** partner | 1

IHSG



S1	5700	R1	5860
S2	5545	R2	6030
S3	5400	R3	6210

Comment:

IHSG consolidations at MA7 support level after rebounded with MA25 support level last week. Trading range 5843–5771.

In the first season of the week. The index has still consolidations at MA7 and trying support MA25 indications.

Stochastic, dead-cross indications at near overbought. Bearish consolidations. RSI pulled back the MA14 of momentum at middle state.

Long term bullish trend movement.

Stop-loss level if broke the support level at 5780. Downside potential until MA50 support level at 5740.

Basic Industry Index



S1	600	R1	622
S2	582	R2	640
S3	560	R3	660

Comment:

Basic Industry index has formations the rectangle and trying to rebound at support rectangle last week. Trading range 602–615

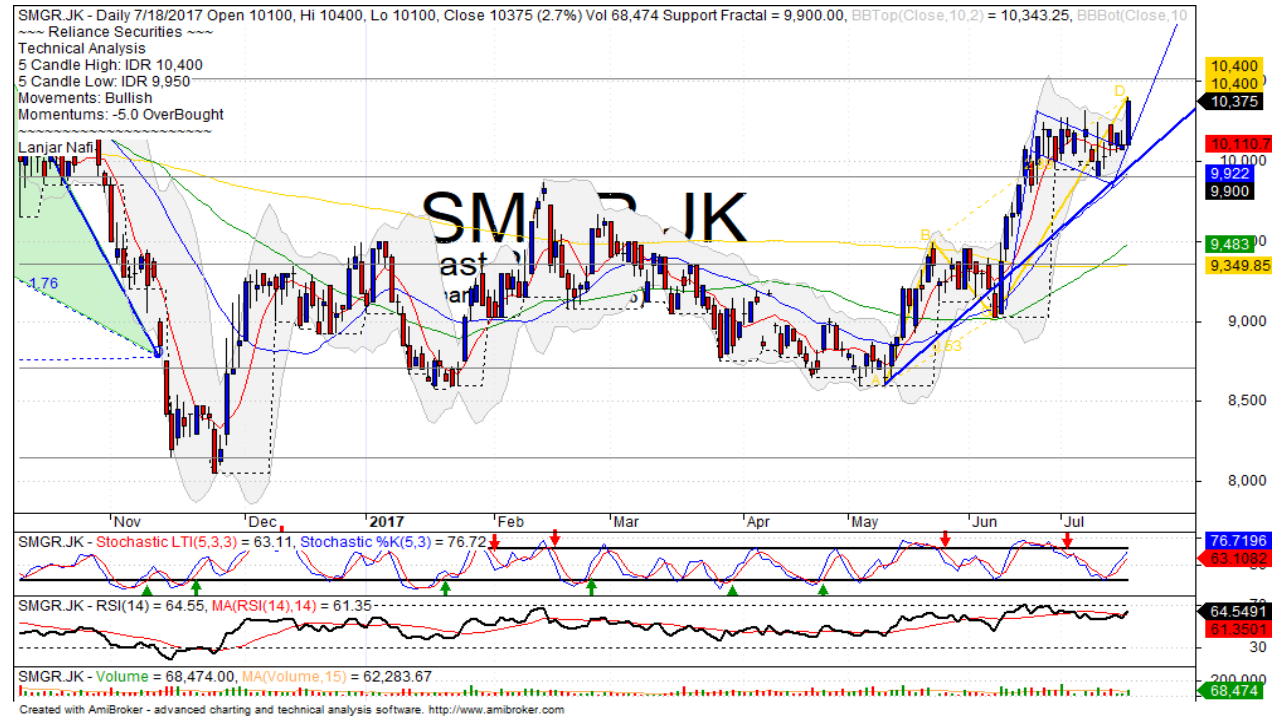
By the first session today, the index has arrived at support rectangle pattern level

Stochastic has near oversold with golden-cross indications oscillator. Broad consolidations potential. RSI indicator also consolidations momentum at middle oscillator.

Long term bullish trend movement.

Upside target to resistance level. This week resistance at 623 (triangle resistance level). Stop-loss at 598 if broke the support level the index will decline until MA200 support level at 571.

SMGR



S1	9900	R1	10500
S2	9350	R2	11000
S3	8700	R3	11500

Comment:

SMGR has forming the flag pattern and trying to break out the resistance bound of flag. Trading range 9950–10400.

By the first session this week, the price has break out the resistance bound of flag pattern and will be reach the flag pole target.

Stochastic bullish movement after golden-cross at oversold oscillator. Broad upside potential. RSI consolidations at near overbought oscillator.

Long term bearish trend movement.

Upside scenario: (Probability 70%)

If the price has broke the resistance level at 10170. Upside target to flag pole target level at 11000.

Downside scenario: (Probability 30%)

Stop loss level if broke the lower bound the flag at 9800. Downside potential until MA50 support level at 9450.

HEAD OFFICE

Reliance Building

Jl. Pluit Sakti Raya No. 27AB,
Pluit
Jakarta 14450
T. +62 21 661 7768
F. +62 21 661 9884

RESEARCH DIVISION

Robertus Yanuar Hardy

robertus@reliance-securities.com

Rio Adrianus

rio.adrianus@reliance-securities.com

Lanjar Nafi Taulat I

lanjar@reliance-securities.com

Aji Setiawan

aji@reliance-securities.com

Shanti Dwi Jayanti

santi@reliance-securities.com

Senior Analyst

Research Analyst

Technical Research Analyst

Associate Research Analyst

Associate Research Analyst

EQUITY DIVISION

Jakarta- Pluit

Jl. Pluit Sakti Raya No. 27AB,
Pluit
Jakarta 14450
T. +62 21 661 7768
F. +62 21 661 9884

Bandung

Jl.Cisangkuy No.58
Bandung 40115
T. +62 22 721 8200
F. +62 22 721 9255

Surabaya - Gubeng

Jl. Bangka No. 22
Surabaya 60281
T. +62 31 501 1128
F. +62 31 503 3196

Makassar

Jl. Boto Lempangan No. 34 J
Makassar- Sulawesi Selatan
T. +62 411 3632388
F. +62 411 3614634

Jakarta - Sudirman

Menara Batavia Ground Floor
Jl.KH.Mas Mansyur Kav 126
Jakarta 10220
T. +62 21 57905455
F. +62 21 57950728

Tasikmalaya

Ruko Tasik Indah Plaza No.21
Jl. KHZ Mustofa No. 345
Tasikmalaya 46121
T. +62 265 345000
F. +62 265 345003

Surabaya - Diponegoro

Jl. Diponegoro No.26D
Surabaya 60261
T. +62 31 567 0388
F. +62 31 561 0528

Medan

Jl. Teuku Amir Hamzah No.40-O
Medan 20117
T. +62 61 6638592
F. +62 61 6638023

Jakarta - Kebon Jeruk

Plaza Kebon Jeruk
Jl.Raya Perjuangan Blok A/2
Jakarta 11530
T. +62 21 532 4074
F. +62 21 536 2157

Malang

Jl. Guntur No. 19
Malang 65112
T. +62 341 347 611
F. +62 341 347 615

Bali - Denpasar

Dewata Square Blok A3
Jl. Letda Tantular Renon
Denpasar 802361
T. +62 361 225099
F. +62 361 245099

Tangerang

Jl. Pahlawan Seribu Ruko BSD
Sektor 7 Blok RK kav. 9
Tangerang 15310
T. +62 21 5387495
F. +62 21 5387494

Pekanbaru

Jl. Jendral Sudirman No.73
Pekanbaru-Riau
T. +62 761 848414
F. +62 761 849456

Pontianak

Jl. MT Haryono No. 6
Pontianak 78121
T. +62 561 575674
F. +62 561 575670

Jakarta - Centro

Ruko Centro Residence Kav. 4-5
Tower C Lt. 1 No. 26-29
Jl. Macan, Daan Mogot
Jakarta 14450
T. +62 21 56945227
F. +62 21 56945226

Solo

Jl. Slamet Riyadi 330^a
Solo 57145
T. +62 271 736599
F. +62 271 733478

Balikpapan

Ruko Bukit Damai Indah
Blok I, No. 3, Rt.34
Jl. MT. Haryono, Gunung
Bahagia, Balikpapan Selatan
76114
T. +62 542 746313
F. +62 542 746317

IDX CORNER & INVESTMENT GALLERY**President University**

Resto Plaza 1F - Jababeka
Education Park
Jl. Ki Hajar Dewantara Raya
Cikarang - Bekasi 17550
T. +62 21 89106030

**Universitas Siliwangi
Tasikmalaya**

Jl. Siliwangi No. 24
Tasikmalaya 46151
T. +62 265 323685
F. +62 265 323534

Politeknik Kediri

Jl. Mayor Bismo No. 27
Kediri 64121
T. +62 354 683128
F. +62 354 683128

**Universitas Muhammadiyah
Sidoarjo**

Jl. Majapahit 666 B
Sidoarjo, Jawa Timur
T. +62 31 8945444
F. +62 31 8949333

**Universitas Tanjungpura
Pontianak**

Jl. Jendral Ahmad Yani
Pontianak 78124
T. +62 561 743465
F. +62 561 766840

**Universitas Pesantren Tinggi
Darul Ulum**

Kompleks Pp Darul Ulu,
Peterongan
Jombang, Jawa Timur 60281
T. +62 321 873655
F. +62 321 875771

STIE "AUB" Surakarta

Jl. Mr. Sartono 97, Cengklik
Nusukan, Surakarta 57135
T. +62 271 854803
F. +62 271 853084

Universitas Surabaya

Jl. Raya Kalirungkut
Surabaya 60293
T. +62 31 298 1203
F. +62 31 298 1204

**Universitas Muhammadiyah
Gresik**

Jl. Sumatra 101 GKB
Gresik 61121
T. +62 31 395 1414
F. +62 31 395 2585

Universitas Negeri Malang

Jl. Surabaya No. 6
Malang 65145
T. +62 341 585914
F. +62 341 55288

**Universitas Muhammadiyah
Malang**

Jl. Raya Tlogomas 246
Malang 65144
T. +62 341 464318-9
F. +62 341 460782

FSEI IAIN Antasari

Jl. Ahmad Yani Km. 4,5
Banjarmasin
T. + 62 511 3265783

STIE Malangkececwara

Jl. Terusan Candi Kalasan
Malang 65142
T. +62 341 491813
F. +62 341 495619

STIESIA Surabaya

Jl. Menur Pumpungan 30
Surabaya
T. +62 31 5947505
F. +62 31 5932218

**Universitas 17 Agustus
1945 Banyuwangi**

Jl. Adi Sucipto 26
Banyuwangi, Jawa Timur
T. +62 333 419613
F. +62 333 419163

STIE Tri Bhakti

Jl. Teuku Umar No. 24
Cut Meutia Setiakawan,
Bekasi
T. +62 21 82429400,
82429500
F. +62 271 726156

**Universitas Islam
Kalimantan**

Jl. Adiyaksa No. 2, Kayu
Tangi, Banjarmasin
T. + 62 511 3303871
F. + 62 511 3303871

STIKOM Bali

Jalan Puputan No. 86, Renon,
Denpasar
T. +62361 244445
F. +62361 264773

**Universitas Muhammadiyah
Pontianak**

Fakultas Ekonomi UM
Pontianak
Jl. Ahmad Yani, No. 111,
Pontianak 78124
T. +62561 743465
F. +62561 766840

**Universitas Negeri
Makassar**

Fakultas Ekonomi Gedung BT
Lt.2
Jl. A.P. Pettarani, Kampus
UNM, Gunungsari Baru
Makassar 90222
T. +62 411 889464 / 881244
F. +62 411 887604

STIE AAS Surakarta

Jl. Slamet Riyadi No. 361,
Kartasura, Surakarta
T. +62 271 726156
F. +62 271 726156

UPN "Veteran" Yogyakarta

Jl. Babarsari 2, Tambak Bayan
Yogyakarta
T. +62 274 485268
F. +62 274 487147

Disclaimer:

Information, opinions and recommendations contained in this document are presented by PT Reliance Sekuritas Indonesia Tbk. from sources that are considered reliable and dependable. This document is not an offer, invitation or any kind of representations to decide to buy or sell stock. Investment decisions taken based on this document is not the responsibility of PT Reliance Sekuritas Indonesia Tbk. PT Reliance Sekuritas Indonesia Tbk. reserves the right to change the contents of this document at any time without prior notice.