

Market View

IHSG (+0.33%) menguat dengan ditutup naik 19.29 poin sebesar 5880.29 dengan volume diatas rata-rata. Sektor pertambangan (+0.83%), pertanian (0.82%) dan Industri dasar (0.78%) menjadi pendorong ditengah penguatan mayoritas harga komoditas seperti Nikel (+3.055) dan Minyak kelapa sawit (+1.22%). Suku bunga terpankaskan 25bps menjadi 4.50% dari 4.75% menjadi salah faktor stabilnya harga saham pada perdagangan kemarin dan membuat investor akan lebih mencermati saham-saham sektor property dan perbankan. Investor asing pun tercatat net buy 337.2 Miliar rupiah.

Leaders:

ALKA (+24.74%), OKAS (+16.47%), MLIA (+14.85%)

Laggards:

LPIN (-20.54%), ASJT (-6.25%), MFMI (-5.88%)

Pergerakan yang melakukan pengujian pada support MA5 secara teknikal dinilai sukses terjadi pada IHSG. Meskipun Indikator stochastic terkonsolidasi negatif hingga berpotensi dead-cross pada level jenuh beli IHSG masih terus memiliki peluang penguatan meskipun sangat terbatas. Sehingga diperkirakan IHSG masih akan bergerak mixed mencoba menguat dengan range pergerakan 5870-5912. Saham-saham yang dapat ASII, EXCL, JSMR, PTBA, TOTL, UNTR, WIKA.

Indeks saham Nikkei (+0.67%), Topix (+0.67%) dan Kospi (+0.15%) kembali dibuka optimis mengawali pergerakan mayoritas indeks saham di Asia pada pagi ini. Harga komoditas seperti Nikel (+0.88%) dan batubara NC (+0.05%) dibuka masih cukup positif melanjutkan penguatan pada perdagangan sebelumnya. Sedangkan Harga minyak WTI (-0.35%) dan Timah (-0.73%) sudah terlihat jenuh mengalami aksi profit taking pada pagi ini.

IHSG Technical Review



Analyst:
Lanjar Nafi

lanjar@reliance-securities.com

+62 21 5793 0008 ext. 604

your **reliable** partner | 1

PTBA

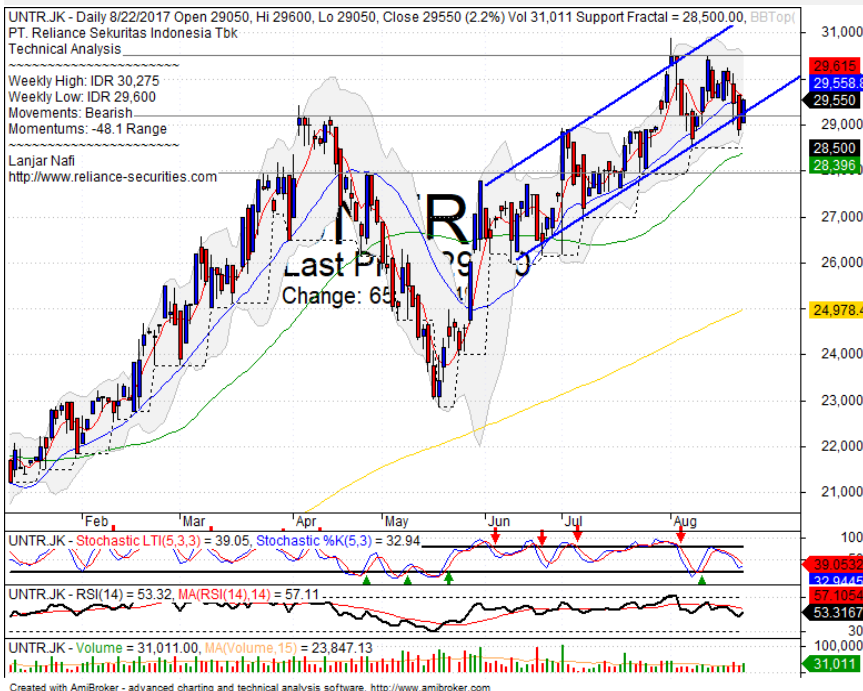


SPECULATIVE BUY

Analisis:

- *Candlestick* membentuk pola *bullish harami* setelah menyentuh *level support* dan *lower bollinger bands*. Indikasi berbalik arah cukup positif.
 - Batasan *stop-loss* jika gagal mengkonfirmasi pola positif di bawah level support.
 - Indikator *Stochastic* terkonsolidasi positif hingga berpotensi *golden-cross* pada area jenuh jual.
- **Support** : 12000-12725
 - **Resistance** : 13275-13850
 - **Stop-loss** : 12700
 - **Target Price** : 13500-14125

UNTR



SPECULATIVE BUY

Analisis:

- *Candlestick* memiliki pola *Bullish Harami* setelah *whipsaw* pada *support level* dan *bullish trend line*. Indikasi positif hingga mencoba melakukan pengujian *resistance level*.
 - Batasan *stop-loss* jika harga terkonfirmasi *break out support*.
 - Indikator *Stochastic* bergerak *bullish* terkonsolidasi pada area dekat jenuh jual. Indikator RSI bergerak *rebound* pada momentumnya.
- **Support** : 28000-29175
 - **Resistance** : 30500-31750
 - **Stop-loss** : 29000
 - **Target Price** : 31000-31500

BSDE



PARTIAL SELL

Analisis:

- *Candlestick* membentuk pola *shooting star* dengan indikasi koreksi jangka pendek.
- Harga saham *pulled back* pada *channeling trend*.
- Batasan *stop-loss* jika tidak terkonfirmasi pola negatif.
- Indikator *Stochastic* memiliki potensi besar untuk *dead-cross* pada area jenuh beli.

- **Support** : 1775-1820
- **Resistance** : 1870-1910
- **Stop-loss** : 1830
- **Downside** : 1800-1770

LPCK



TRADING BUY

Analisis:

- Pola pergerakan membentuk *flag pattern* dengan indikasi *continuations pattern* hingga memiliki target setinggi tiang flag nya.
- Batasan *stop-loss* jika harga saham berbalik turun hingga dibawah *lower bound*.
- Indikator *Stochastic* tiba pada level jenuh jual dengan potensi membentuk pola *golden-cross*

- **Support** : 4400-4600
- **Resistance** : 4760-4990
- **Stop-loss** : 4650
- **Target Price** : 5000-5200

Stocks	S2	S1	Closing Price	R1	R2	Technical Notes	Rec	Stop Loss	Rec Buy Prc	Target Price
Plantation										
AALI	14,850	15,050	15,225	15,400	15,725	Rebounded at MA50	H	15,000		15,400
LSIP	1,330	1,365	1,385	1,400	1,475	Consolidations	H	1,370		1,415
Mining										
INCO	2,670	2,850	2,990	3,000	3,200	Overbought	H	2,970		3,000
Consumer										
UNVR	47,175	48,300	49,275	49,575	50,800	Consolidations	H	49,200		50,000
INDF	7,900	8,100	8,325	8,500	9,125	Consolidations	SB	8,100	8,400	8,500
KLBF	1,700	1,760	1,775	1,810	1,850	Consolidations	H	1,750		1,800
Trading										
ACES	1,000	1,050	1,065	1,100	1,145	Whipsaw at MA50	SB	1,040		1,145
AKRA	6,300	6,500	6,625	6,750	7,000	Consolidations	SB	6,500		6,750
UNTR	28,500	29,200	29,550	30,300	31,500	Break out MA20	TB	29,100		30,300
Property & Construction										
LPCK	4,610	4,770	4,740	5,000	5,150	Pulled back MA200	S	4,760		
WIKA	1,900	1,970	2,010	2,070	2,110	Rectangle	TB	1,950		2,070
BSDE	1,770	1,820	1,850	1,870	1,910	Shooting star	S	1,800		
WSKT	2,120	2,260	2,280	2,410	2,600	Consolidations	W	2,250		
ADHI	1,945	2,050	2,110	2,110	2,170	Rebounded at MA5	TB	2,040		2,250
Basic Industry & Chemical										
SMGR	10,200	10,700	10,850	11,100	11,400	Bearish consolidations	S	10,600		
CPIN	2,700	2,800	2,820	2,900	3,000	Bearish momentum	S	2,780		
MAIN	860	925	935	960	1,020	Oversold	TB	900		1,000
INTP	19,000	19,525	19,800	20,050	20,700	Stoch golden-cross	S	19,500		
Miscellaneous										
SRIL	295	316	348	356	400	Bullish momentum	TB	314		356
ASII	7,400	7,625	7,925	7,925	8,150	Rebounded at MA5	TB	7,800		8,150
Finance										
BBTN	2,700	2,840	2,900	2,900	3,000	Overbought	H	2,870		3,000
BMRI	12,450	13,000	13,250	13,500	13,900	Consolidations	TB	13,000		13,500
BTPN	2,440	2,490	2,560	2,550	2,590	Consolidations	H	2,540		
BJBR	2,320	2,480	2,690	2,690	2,840	Bullish engulfing	H	2,650		2,940
BBRI	14,775	15,200	15,300	15,500	16,000	Overbought	H	15,100		15,500
Infrastructure										
TLKM	4,400	4,570	4,790	4,800	5,025	Stoch dead-cross	PS	4,760		
PGAS	2,040	2,120	2,160	2,210	2,400	Bearish momentum	PS	2,120		

Source : Reliance Sekuritas Indonesia

Analyst Conclusions:

The index has whipsaw at upper MA50 support level. Bullish continuations indications.

Legend :

- B: BUY (allocate till 100% of the weighted capital to accumulate, higher than 50% upside probability)
- SB: SPECULATIVE BUY (allocate 25%-50% of the weighted capital to accumulate, 25%-50% upside probability)
- W: WAIT (wait for proper entry level, do the stop-loss if necessary)
- H: HOLD (hold the portfolio position, aim for the best price to distribute)
- PS: PARTIAL SELL (distribute 25%-50% part of the portfolio, 25%-50% downside probability)
- S: SELL (distribute till 100% of the portfolio, higher than 50% downside probability)
- TB: TRADING BUY (short term or intraday trading within a tight trading range. Highly speculative).

Ticker	Resistance	Price	Support	Weekly	Weekly	Indicator			Moving Average			
	Fractal	8/22/2017	Fractal	High	Low	Stochastic	RSI	B. Band	20 Days	50 Days	200 Days	
AALIJK	15,275	15,225	14,725	15,225	14,900	Neutral	Bullish	Neutral	Middle Bands	Upper	Upper	Under
ACESJK	1,100	1,065	1,060	1,100	1,080	Neutral	Bearish	Neutral	Middle Bands	Under	Under	Upper
ADHIJK	2,150	2,110	2,060	2,150	2,100	Neutral	Bearish	Neutral	Middle Bands	Under	Under	Under
ADROJK	1,900	1,860	1,805	1,900	1,865	Neutral	Bearish	Neutral	Middle Bands	Upper	Upper	Upper
AISAJK	1,135	1,050	1,015	1,130	1,075	Neutral	Bearish	Oversold	Middle Bands	Under	Under	Under
AKRAJK	6,825	6,625	6,500	6,825	6,650	Neutral	Bearish	Neutral	Middle Bands	Under	Upper	Upper
ANTMJK	710	725	670	735	685	Neutral	Bullish	Neutral	Upper Bands	Upper	Upper	Under
APLNJK	246	232	230	246	236	Neutral	Bearish	Neutral	Middle Bands	Upper	Upper	Upper
ASIIJK	7,975	7,925	7,775	7,975	7,875	Neutral	Bullish	Neutral	Middle Bands	Upper	Under	Under
ASRIJK	362	366	344	374	358	Neutral	Bearish	Neutral	Middle Bands	Upper	Upper	Upper
BBCAJK	18,925	18,800	18,500	18,925	18,800	Neutral	Bullish	Neutral	Middle Bands	Upper	Upper	Upper
BBKPK	640	600	595	610	605	Neutral	Bearish	Neutral	Middle Bands	Under	Under	Under
BBNIJK	7,450	7,400	7,325	7,450	7,400	Neutral	Bearish	Neutral	Middle Bands	Upper	Upper	Upper
BBRIJK	15,000	15,300	14,950	15,350	15,100	Overbought	Bearish	Neutral	Upper Bands	Upper	Upper	Upper
BBTNJK	2,780	2,900	2,650	2,900	2,730	Neutral	Bullish	Overbought	Upper Bands	Upper	Upper	Upper
BDMNJK	5,550	5,575	5,275	5,625	5,400	Overbought	Bullish	Neutral	Middle Bands	Upper	Upper	Upper
BHITJK	104	100	98	104	101	Neutral	Bearish	Neutral	Middle Bands	Under	Under	Under
BJBRJK	2,990	2,690	2,620	2,750	2,630	Neutral	Bullish	Neutral	Middle Bands	Upper	Upper	Upper
BJTMJK	725	715	690	740	705	Neutral	Bullish	Neutral	Middle Bands	Upper	Upper	Upper
BKSLJK	142	144	91	144	133	Neutral	Bullish	Overbought	Upper Bands	Upper	Upper	Upper
BKRIJK	13,675	13,250	13,150	13,325	13,200	Neutral	Bullish	Neutral	Middle Bands	Under	Upper	Upper
BMTRJK	515	494	494	515	498	Neutral	Bearish	Neutral	Middle Bands	Under	Under	Under
BSDEJK	1,850	1,850	1,770	1,875	1,820	Neutral	Bullish	Neutral	Middle Bands	Upper	Upper	Upper
BTPNJK	2,600	2,560	2,520	2,580	2,540	Neutral	Bullish	Neutral	Middle Bands	Upper	Upper	Under
BWPTJK	232	220	216	224	220	Neutral	Bullish	Neutral	Middle Bands	Under	Under	Under
CMNPJK	1,370	1,330	1,320	1,345	1,335	Neutral	Bearish	Neutral	Middle Bands	Under	Under	Under
CPINJK	2,840	2,820	2,730	2,950	2,840	Neutral	Bearish	Neutral	Middle Bands	Upper	Under	Under
CSAPJK	468	494	456	496	470	Overbought	Bearish	Overbought	Upper Bands	Upper	Upper	Upper
CTRAJK	1,215	1,230	1,120	1,245	1,185	Overbought	Bearish	Neutral	Middle Bands	Upper	Upper	Under
DILDJK	428	418	394	418	410	Neutral	Bullish	Neutral	Middle Bands	Upper	Upper	Under
EXCLJK	3,630	3,420	3,360	3,490	3,450	Neutral	Bearish	Neutral	Middle Bands	Upper	Upper	Upper
GGRMJK	74,975	70,500	65,500	74,975	67,600	Neutral	Bearish	Neutral	Middle Bands	Under	Under	Upper
GIAAJK	348	334	336	348	340	Oversold	Bullish	Neutral	Lower Bands	Under	Under	Under
QITLJK	1,000	970	955	1,000	970	Neutral	Bearish	Neutral	Middle Bands	Upper	Under	Under
HEXAJK	4,110	4,050	4,000	4,110	4,020	Neutral	Bullish	Neutral	Middle Bands	Under	Upper	Upper
HRUMJK	2,470	2,380	2,290	2,440	2,380	Neutral	Bullish	Neutral	Middle Bands	Upper	Upper	Upper
ICBPJK	8,675	8,725	8,200	8,775	8,425	Overbought	Bearish	Neutral	Upper Bands	Upper	Upper	Upper
IMASJK	1,140	1,020	1,020	1,110	1,040	Neutral	Bearish	Neutral	Middle Bands	Under	Under	Under
INCOJK	2,690	2,990	2,500	3,000	2,570	Neutral	Bullish	Overbought	Upper Bands	Upper	Upper	Upper
INDFJK	8,450	8,325	8,225	8,450	8,350	Neutral	Bearish	Neutral	Middle Bands	Under	Under	Upper
INDYJK	930	1,030	840	1,045	910	Neutral	Bullish	Neutral	Upper Bands	Upper	Upper	Upper
INTAJK	318	300	272	318	302	Neutral	Bearish	Neutral	Middle Bands	Upper	Upper	Under
INTPJK	19,200	19,800	18,450	19,850	19,225	Overbought	Bearish	Neutral	Middle Bands	Upper	Upper	Upper
ITMGJK	20,825	20,025	19,625	20,825	20,325	Neutral	Bearish	Neutral	Middle Bands	Under	Upper	Upper
JPFAJK	1,225	1,165	1,100	1,225	1,190	Neutral	Bearish	Neutral	Middle Bands	Under	Under	Under
JSMRJK	5,625	5,450	5,400	5,625	5,475	Neutral	Bearish	Neutral	Middle Bands	Under	Upper	Upper
KUJAJK	320	312	306	316	312	Neutral	Bullish	Neutral	Middle Bands	Under	Under	Upper
KLBFJK	1,795	1,775	1,680	1,795	1,730	Neutral	Bearish	Neutral	Middle Bands	Upper	Upper	Upper
KRASJK	605	585	560	605	575	Neutral	Bullish	Neutral	Middle Bands	Upper	Under	Under
LPCKJK	4,890	4,740	4,270	4,890	4,800	Neutral	Bearish	Neutral	Middle Bands	Upper	Upper	Under
LPKRJK	795	785	755	800	790	Neutral	Bearish	Neutral	Middle Bands	Upper	Upper	Upper
LPPFJK	11,475	10,550	10,350	11,475	10,775	Neutral	Bearish	Neutral	Middle Bands	Under	Under	Under
LSIPJK	1,435	1,385	1,370	1,405	1,390	Neutral	Bullish	Neutral	Middle Bands	Under	Under	Under
MAINJK	1,100	935	905	965	925	Neutral	Bearish	Neutral	Upper Bands	Under	Under	Under
MAPIJK	6,850	6,900	6,350	6,900	6,575	Neutral	Bullish	Neutral	Middle Bands	Upper	Upper	Upper
MASAJK	220	204	198	208	200	Neutral	Bullish	Neutral	Middle Bands	Under	Under	Under
MNCNJK	1,545	1,480	1,435	1,545	1,485	Neutral	Bearish	Neutral	Middle Bands	Under	Under	Under
MPPAJK	850	730	540	850	565	Neutral	Bearish	Neutral	Middle Bands	Upper	Upper	Under
MTLAJK	322	348	360	368	348	Neutral	Bearish	Neutral	Lower Bands	Under	Upper	Upper
MYORJK	1,995	1,895	1,750	1,995	1,920	Neutral	Bearish	Neutral	Middle Bands	Under	Under	Upper
PGASJK	2,230	2,160	2,110	2,230	2,140	Neutral	Bullish	Neutral	Middle Bands	Under	Under	Under
PTBAJK	13,975	13,100	13,100	13,350	13,175	Neutral	Bullish	Neutral	Middle Bands	Under	Upper	Upper
RALSJK	980	1,010	925	1,025	960	Neutral	Bullish	Neutral	Middle Bands	Upper	Under	Under
ROTIJK	1,245	1,175	1,180	1,210	1,190	Oversold	Bullish	Neutral	Lower Bands	Under	Under	Under
SCMAJK	2,470	2,300	2,300	2,410	2,330	Oversold	Bearish	Neutral	Middle Bands	Under	Under	Under
SGROJK	2,010	1,990	1,985	2,010	1,960	Neutral	Bullish	Neutral	Middle Bands	Under	Under	Upper
SIMPJK	520	505	496	510	505	Neutral	Bullish	Neutral	Middle Bands	Under	Under	Under
SMCBJK	855	800	790	815	805	Neutral	Bearish	Neutral	Middle Bands	Under	Upper	Under
SMGRJK	10,750	10,850	10,275	11,075	10,900	Neutral	Bearish	Neutral	Middle Bands	Upper	Upper	Upper
SMRAJK	1,150	1,095	985	1,140	1,105	Neutral	Bearish	Neutral	Middle Bands	Upper	Under	Upper
SRILJK	378	348	322	358	342	Neutral	Bearish	Neutral	Middle Bands	Upper	Upper	Upper
SSIAJK	715	675	660	700	685	Neutral	Bearish	Neutral	Middle Bands	Under	Upper	Upper
SSMSJK	1,575	1,485	1,365	1,575	1,535	Neutral	Bearish	Neutral	Middle Bands	Upper	Under	Under
TLKMJK	4,820	4,790	4,660	4,820	4,750	Neutral	Bearish	Neutral	Middle Bands	Upper	Upper	Upper
TOTLJK	780	760	735	765	750	Neutral	Bullish	Neutral	Middle Bands	Upper	Upper	Under
UNTRJK	30,275	29,550	28,500	30,275	29,600	Neutral	Bearish	Neutral	Middle Bands	Under	Upper	Upper
UNVRJK	48,100	49,275	47,300	49,500	49,000	Neutral	Bearish	Neutral	Middle Bands	Upper	Upper	Upper

Source - Reliance Research

Legend :

- Movement: Bullish and Bearish (Indicator Stochastic)
- Momentum: Oversold, Overbought and Neutral (Indicator RSI)
- Resistance Fractal: Strong Resistance
- Support Fractal: Strong Support
- Green: Good Conditions
- Red: Poor Conditions

HEAD OFFICE

Reliance Building

Jl. Pluit Sakti Raya No. 27AB,
Pluit
Jakarta 14450
T. +62 21 661 7768
F. +62 21 661 9884

RESEARCH DIVISION

Robertus Yanuar Hardy

robertus@reliance-securities.com

Rio Adrianus

rio.adrianus@reliance-securities.com

Lanjar Nafi Taulat I

lanjar@reliance-securities.com

Aji Setiawan

aji@reliance-securities.com

Shanti Dwi Jayanti

santi@reliance-securities.com

Head of Research

Research Analyst

Technical Research Analyst

Associate Research Analyst

Associate Research Analyst

EQUITY DIVISION

Jakarta- Pluit

Jl. Pluit Sakti Raya No. 27AB,
Pluit
Jakarta 14450
T. +62 21 661 7768
F. +62 21 661 9884

Bandung

Jl.Cisangkuy No.58
Bandung 40115
T. +62 22 721 8200
F. +62 22 721 9255

Surabaya - Gubeng

Jl. Bangka No. 22
Surabaya 60281
T. +62 31 501 1128
F. +62 31 503 3196

Makassar

Jl. Boto Lempangan No. 34 J
Makassar- Sulawesi Selatan
T. +62 411 3632388
F. +62 411 3614634

Jakarta - Sudirman

Menara Batavia Ground Floor
Jl.KH.Mas Mansyur Kav 126
Jakarta 10220
T. +62 21 57905455
F. +62 21 57950728

Tasikmalaya

Ruko Tasik Indah Plaza No.21
Jl. KHZ Mustofa No. 345
Tasikmalaya 46121
T. +62 265 345000
F. +62 265 345003

Surabaya – Diponegoro

Jl. Diponegoro No.26D
Surabaya 60261
T. +62 31 567 0388
F. +62 31 561 0528

Medan

Jl. Teuku Amir Hamzah No.40-O
Medan 20117
T. +62 61 6638592
F. +62 61 6638023

Jakarta – Kebon Jeruk

Plaza Kebon Jeruk
Jl.Raya Perjuangan Blok A/2
Jakarta 11530
T. +62 21 532 4074
F. +62 21 536 2157

Malang

Jl. Guntur No. 19
Malang 65112
T. +62 341 347 611
F. +62 341 347 615

Bali - Denpasar

Dewata Square Blok A3
Jl. Letda Tantular Renon
Denpasar 802361
T. +62 361 225099
F. +62 361 245099

Tangerang

Jl. Pahlawan Seribu Ruko BSD
Sektor 7 Blok RK kav. 9
Tangerang 15310
T. +62 21 5387495
F. +62 21 5387494

Pekanbaru

Jl. Jendral Sudirman No.73
Pekanbaru-Riau
T. +62 761 848414
F. +62 761 849456

Pontianak

Jl. MT Haryono No. 6
Pontianak 78121
T. +62 561 575674
F. +62 561 575670

Solo

Jl. Slamet Riyadi 330^a
Solo 57145
T. +62 271 736599
F. +62 271 733478

Balikpapan

Ruko Bukit Damai Indah
Blok I, No. 3, Rt.34
Jl. MT. Haryono, Gunung
Bahagia, Balikpapan Selatan
76114
T. +62 542 746313
F. +62 542 746317

IDX CORNER & INVESTMENT GALLERY

STIE Malangkecewara

Jl. Terusan Candi Kalasan
Malang 65142
T. +62 341 491813
F. +62 341 495619

Universitas Muhammadiyah Gresik

Jl. Sumatra 101 GKB
Gresik 61121
T. +62 31 3951414
F. +62 31 3952585

Universitas Surabaya

Jl. Raya Kalirungkut
Surabaya 60293
T. +62 31 2981203
F. +62 31 2981204

Universitas Muhammadiyah Malang

Jl. Raya Tlogomas 246
Malang 65144
T. +62 341 464318-9
F. +62 341 460782

Universitas Siliwangi Tasikmalaya

Jl. Siliwangi No. 24
Tasikmalaya 46151
T. +62 265 323685
F. +62 265 323534

Politeknik Kediri

Jl. Mayor Bismo No. 27
Kediri 64121
T. +62 354 683128
F. +62 354 683128

Universitas Negeri Malang

Jl. Surabaya No. 6
Malang 65145
T. +62 341 585914
F. +62 341 55288

Universitas Negeri Makassar

FakultasEkonomiGedung BT Lt. 2
Jl. A. P. Pettarani, Kampus UNM, Gunungsari
Baru
Makassar 90222
T. +62 411 889464, 881244
F. +62 411 887604

Universitas Muhammadiyah Pontianak

Jl. Ahmad Yani, No. 111
Pontianak 78124
T. +62 561 743465
F. +62 561 766840

STIE AAS

Jalan Slamet Riyadi No 361
Kartasura, Surakarta
T. +62 271 726156
F. +62 271 726156

Universitas Tanjungpura Pontianak

Jl. Jendral Ahmad Yani
Pontianak 78124
T. +62 561 743465
F. +62 561 766840

STIE "AUB" Surakarta

Jl. Mr. Sartono 97, Cengklik
Nusukan, Surakarta 57135
T. +62 271 854803
F. +62 271 853084

STIESIA Surabaya

Jl. MenurPumpungan 30
Surabaya
T. +62 31 5947505
F. +62 31 5932218

Universitas Muhammadiyah Sidoarjo

Jl. Majapahit 666 B
Sidoarjo, JawaTimur
T. +62 31 8945444
F. +62 31 8949333

Universitas Pesantren Tinggi Darul Ulum

Kompleks Pp Darul Ulu, Peterongan
Jombang, JawaTimur 60281
T. +62 321 873655
F. +62 321 875771

STIE Tri Bhakti

Jl. Teuku Umar No.24
Cut Meutia Setiakawan, Bekasi
T. +62 21 8242 9400, 8242 9500
F. +62 271 726156

STIKOM BALI

Jl. Raya Puputan No. 86, Renon, Denpasar
Timur, kota Denpasar
Bali-80234
T. +62 361 244445

Universitas 17 Agustus 1945 Banyuwangi

Jl. AdiSucipto 26
Banyuwangi, JawaTimur
T. +62 333 419163
F. +62 333 419163

IAIN Antasari

Jl. Ahmad Yani Km. 4,5 Banjarmasin
T. +62 511 3267583

Universitas Islam Kalimantan

Jl. Adiyaksa No.2, Kayu Tangi, Banjarmasin
T. +62 511 3303871
F. +62 511 3303871

Disclaimer:

Information, opinions and recommendations contained in this document are presented by PT Reliance Sekuritas Indonesia Tbk. from sources that are considered reliable and dependable. This document is not an offer, invitation or any kind of representations to decide to buy or sell stock. Investment decisions taken based on this document is not the responsibility of PT Reliance Sekuritas Indonesia Tbk. PT Reliance Sekuritas Indonesia Tbk. reserves the right to change the contents of this document at any time without prior notice.