

## Market View

IHSG (-0.34%) diperdagangkan cenderung tertekan dengan ditutup turun 19.91 poin dilevel 5894.12 dengan volume perdagangan yang lebih besar dari perdagangan sebelumnya. Aksi jual investor terhadap saham-saham sektor konsumsi (-0.79%) dan keuangan perbankan (-0.57%) menjadi pemicu pelemahan. Investor asing pun berbalik melakukan aksi jual pada pasar reguler (-149.51 Miliar rupiah) maupun pasar negosiasi (-434.81 Miliar rupiah) dengan total net sell sebesar 584.32 Miliar rupiah.

### Leaders:

TRAM (+33.11%), DGIK (+28.57%), OKAS (+28.47%)

### Laggards:

ALKA (-24.89%), MREI (-22.86%), HOKI (-18.92%)

Secara teknikal IHSG membentuk pola bearish engulfing setelah pulled back resistance level tertinggi tahun ini. Namun pergerakan IHSG masih cukup tertahan pada Moving Average 5 hari. Meskipun demikian probabilitas koreksi masih membayangi melihat posisi IHSG yang telah jenuh beli dan Indikator Stochastic bergerak dead-cross seiring reversal momentum yang dialami RSI. Sehingga diperkirakan IHSG akan kembali tertekan jangka pendek dengan kembali melakukan pengujian terhadap support MA5 (5888) yang selanjutnya support bullish trend line (5850). Rentan perdagangan IHSG akhir pekan berada di level 5850-5900. Saham-saham yang masih dapat dicermati diantaranya AKRA, ASII, JSRM, MNCN, UNTR, WIKA, TBIG.

Dibuka optimis Nikkei (+0.44%), Topix (+0.38%) dan Kospi (+0.01%) mengawali pergerakan mayoritas indeks saham di Asia pada akhir pekan cukup baik. Pergerakan harga komoditas mulai jenuh terlihat Nikel (+0.73%), Timah (-0.17%) dan Batubara NC (+0.05%) terkonsolidasi diakhir pekan.

## IHSG Technical Review



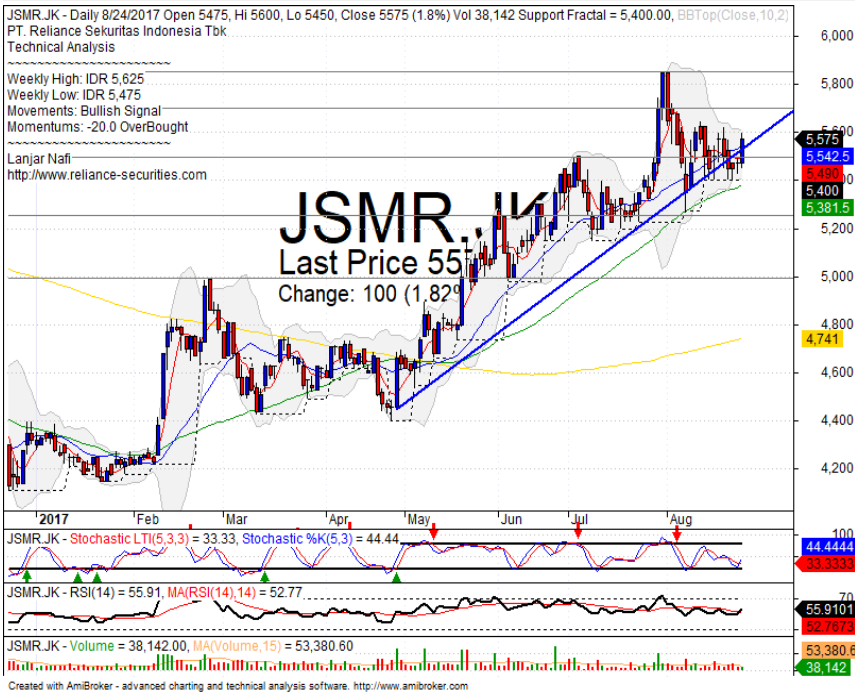
**Analyst:**  
Lanjar Nafi

[lanjar@reliance-securities.com](mailto:lanjar@reliance-securities.com)

+62 21 5793 0008 ext. 604

your **reliable** partner | 1

## JSMR



## BUY

### Analisis:

- Candlestick membentuk pola *bullish break away* dan berhasil *whipsaw* pada level MA25 dan *bullish trend line*. Indikasi penguatan jangka pendek hingga menguji *resistance*.
- Batasan *stop-loss* berada jika *break out bullish trend line* sebagai *support* terdekat.
- Indikator *Stochastic* terlihat *golden-cross* pada posisi jenuh jual dan Indikator *RSI* yang terkonsolidasi positif pada area *middle*.

- Support : 5250-5500
- Resistance : 5700-5850
- Stop-loss : 5475
- Target Price : 5850

## WIKA



## TRADING BUY

### Analisis:

- Harga saham telah tiba pada support pola *rectangle* dengan indikasi berbalik arah menuju *resistance* terdekat.
- Batasan *stop-loss* jika harga terkonfirmasi *break out lower bounds* dari *rectangle*.
- Indikator *Stochastic* yang telah jenuh jual membentuk pola *golden-cross* dengan potensi penguatan.

- Support : 1900-1985
- Resistance : 2090-2000
- Stop-loss : 1970
- Target Price : 2100

## AISA



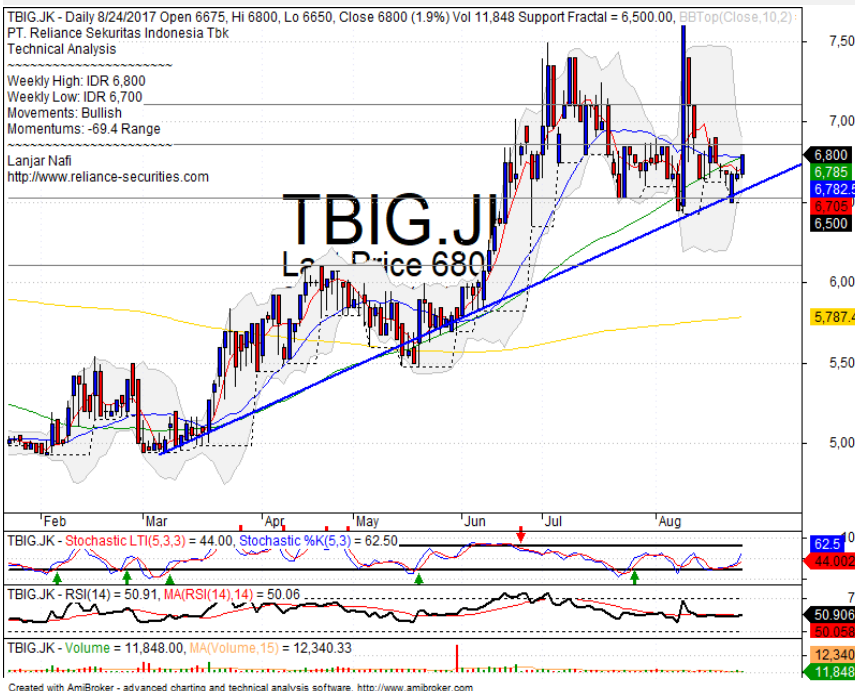
## BUY ON WEAKNESS

### Analisis:

- Harga saham memiliki pola pergerakan EW yang cukup sempurna dan kini sedang membentuk wave a. Pergerakan akan positif jika berhasil *break out* MA20 sebagai konfirmasi terdekat.
- Batasan *stop-loss* jika *break out* *support level*.
- Indikator *Stochastic* bergerak mencoba membentuk *golden-cross* dengan *Momentum oversold* dari RSI.

- **Support** : 905-1015
- **Resistance** : 1130-1270
- **Stop-loss** : 990
- **Target Price** : 1210

## TBIG



## BUY

### Analisis:

- Harga saham terkonfirmasi *Whipsaw* pada *support bullish trend* dan mencoba kembali diatas MA50. Indikasi penguatan cukup positif hingga melakukan pengujian *resistance*.
- Batasan *stop-loss* jika harga saham berbalik turun dan *break out bullish trend line*.
- Indikator *stochastic* bergerak menguat setelah *golden-cross* pada area jenuh jual.

- **Support** : 6100-6525
- **Resistance** : 6850-7100
- **Stop-loss** : 6600
- **Target Price** : 7100

Stocks	S2	S1	Closing Price	R1	R2	Technical Notes	Rec	Stop Loss	Rec Buy Prc	Target Price
<b>Plantation</b>										
AALI	14,850	15,000	<b>15,000</b>	15,400	15,725	Pulled back MA200	S	15,000		
LSIP	1,330	1,365	<b>1,375</b>	1,400	1,475	Consolidations	TB	1,360		1,415
<b>Mining</b>										
INCO	2,670	2,850	<b>2,920</b>	3,000	3,200	Bearish momentum	PS	2,840		
<b>Consumer</b>										
UNVR	48,300	49,500	<b>49,500</b>	50,800	52,000	Overbought	H	49,500		50,000
INDF	7,900	8,100	<b>8,400</b>	8,500	9,125	Consolidations	TB	8,100		8,500
KLBF	1,700	1,755	<b>1,725</b>	1,810	1,850	Bearish momentum	S	1,740		
<b>Trading</b>										
ACES	1,000	1,050	<b>1,055</b>	1,100	1,145	Whipsaw at MA50	TB	1,040		1,145
AKRA	6,300	6,500	<b>6,600</b>	6,750	7,000	Consolidations	TB	6,500		7,000
UNTR	28,000	29,225	<b>30,475</b>	30,475	31,700	Bullish momentum	H	30,300		30,300
<b>Property &amp; Construction</b>										
LPCK	4,400	4,610	<b>4,670</b>	4,770	5,000	Pulled back MA200	W	4,600		
WIKA	1,900	1,970	<b>1,990</b>	2,070	2,110	Rectangle	TB	1,950		2,070
BSDE	1,770	1,820	<b>1,820</b>	1,870	1,910	Bearish momentum	S	1,800		
WSKT	2,120	2,260	<b>2,260</b>	2,410	2,600	Oversold	W	2,250		
ADHI	1,945	2,050	<b>2,050</b>	2,110	2,170	Bearish momentum	W	2,040		
<b>Basic Industry &amp; Chemical</b>										
SMGR	10,200	10,700	<b>10,750</b>	11,100	11,400	Bearish consolidations	S	10,600		
CPIN	2,700	2,800	<b>2,830</b>	2,900	3,000	Bearish momentum	S	2,780		
MAIN	860	925	<b>930</b>	960	1,020	Consolidations	W	900		
INTP	19,000	19,525	<b>19,700</b>	20,050	20,700	Bearish momentum	S	19,500		
<b>Miscellaneous</b>										
SRIL	295	316	<b>344</b>	356	400	Consolidations	W	314		
ASII	7,625	7,925	<b>7,975</b>	8,150	8,350	Bullish momentum	B	7,900	7,950	8,150
<b>Finance</b>										
BBTN	2,700	2,840	<b>2,840</b>	2,900	3,000	Bearish momentum	S	2,820		
BMRI	12,450	13,000	<b>13,200</b>	13,500	13,900	Consolidations	W	13,000		
BTPN	2,440	2,490	<b>2,550</b>	2,550	2,590	Consolidations	PS	2,540		
BJBR	2,320	2,480	<b>2,660</b>	2,690	2,840	Consolidations	TB	2,650		2,940
BBRI	14,775	15,200	<b>15,225</b>	15,500	16,000	Stoch dead-cross	S	15,100		
<b>Infrastructure</b>										
TLKM	4,400	4,570	<b>4,780</b>	4,800	5,025	Bearish momentum	S	4,760		
PGAS	2,040	2,120	<b>2,180</b>	2,210	2,400	Bearish momentum	S	2,120		

Source : Reliance Sekuritas Indonesia

## Analyst Conclusions:

The index still bearish consolidations after reached the all time high level.

Legend :

- B: BUY (allocate till 100% of the weighted capital to accumulate, higher than 50% upside probability)
- SB: SPECULATIVE BUY (allocate 25%-50% of the weighted capital to accumulate, 25%-50% upside probability)
- W: WAIT (wait for proper entry level, do the stop-loss if necessary)
- H: HOLD (hold the portfolio position, aim for the best price to distribute)
- PS: PARTIAL SELL (distribute 25%-50% part of the portfolio, 25%-50% downside probability)
- S: SELL (distribute till 100% of the portfolio, higher than 50% downside probability)
- TB: TRADING BUY (short term or intraday trading within a tight trading range. Highly speculative).

Ticker	Resistance	Price	Support	Weekly	Weekly	Indicator			Moving Average			
	Fractal	8/24/2017	Fractal	High	Low	Stochastic	RSI	B. Band	20 Days	50 Days	200 Days	
AALIJK	15,275	15,000	14,650	15,325	14,900	Neutral	Bullish	Neutral	Middle Bands	Upper	Upper	Under
ACESJK	1,100	1,055	1,060	1,095	1,075	Neutral	Bullish	Neutral	Lower Bands	Under	Under	Upper
ADHIJK	2,150	2,050	2,060	2,150	2,100	Neutral	Bullish	Neutral	Lower Bands	Under	Under	Under
ADROJK	1,900	1,965	1,850	1,995	1,875	Neutral	Bullish	Neutral	Upper Bands	Upper	Upper	Upper
AISAJK	1,135	1,055	1,015	1,085	1,060	Neutral	Bearish	Neutral	Middle Bands	Under	Under	Under
AKRAJK	6,825	6,600	6,500	6,825	6,600	Neutral	Bearish	Neutral	Middle Bands	Under	Upper	Upper
ANTMJK	710	740	670	755	695	Neutral	Bullish	Neutral	Upper Bands	Upper	Upper	Under
APLNJK	246	228	230	238	232	Oversold	Bearish	Neutral	Middle Bands	Under	Upper	Upper
ASIIJK	7,975	7,975	7,775	8,050	7,950	Neutral	Bullish	Neutral	Middle Bands	Upper	Under	Under
ASRIJK	362	362	344	374	370	Neutral	Bearish	Neutral	Middle Bands	Upper	Upper	Upper
BBCAJK	18,925	18,950	18,500	19,150	18,825	Neutral	Bullish	Neutral	Middle Bands	Upper	Upper	Upper
BBKPK	610	600	595	610	605	Neutral	Bearish	Neutral	Middle Bands	Under	Under	Under
BBNIJK	7,450	7,425	7,325	7,450	7,400	Neutral	Bearish	Neutral	Middle Bands	Upper	Upper	Upper
BBRIJK	15,000	15,225	14,950	15,350	15,250	Overbought	Bearish	Neutral	Middle Bands	Upper	Upper	Upper
BBTNJK	2,780	2,840	2,650	3,030	2,800	Overbought	Bearish	Neutral	Middle Bands	Upper	Upper	Upper
BDMNJK	5,625	5,475	5,275	5,625	5,550	Neutral	Bearish	Neutral	Middle Bands	Upper	Upper	Upper
BHITJK	104	98	98	103	100	Neutral	Bearish	Oversold	Middle Bands	Under	Under	Under
BJBRJK	2,990	2,660	2,510	2,750	2,630	Neutral	Bullish	Neutral	Middle Bands	Upper	Upper	Upper
BJTMJK	740	700	690	740	705	Neutral	Bearish	Neutral	Middle Bands	Upper	Upper	Upper
BKSLJK	142	143	129	148	133	Neutral	Bullish	Overbought	Middle Bands	Upper	Upper	Upper
BMRIJK	13,675	13,200	13,050	13,375	13,200	Neutral	Bullish	Neutral	Middle Bands	Under	Upper	Upper
BMTRJK	515	490	490	510	498	Oversold	Bearish	Neutral	Lower Bands	Under	Under	Under
BSDEJK	1,850	1,820	1,770	1,875	1,820	Neutral	Bearish	Neutral	Middle Bands	Upper	Upper	Under
BTPNJK	2,600	2,550	2,540	2,560	2,540	Neutral	Bullish	Neutral	Middle Bands	Upper	Upper	Under
BWPTJK	224	222	212	226	220	Neutral	Bullish	Neutral	Middle Bands	Upper	Under	Under
CMNPJK	1,370	1,360	1,325	1,400	1,335	Neutral	Bullish	Neutral	Upper Bands	Upper	Upper	Under
CPINJK	2,840	2,830	2,730	2,950	2,840	Neutral	Bearish	Neutral	Middle Bands	Upper	Under	Under
CSAPJK	468	488	456	500	490	Overbought	Bearish	Neutral	Middle Bands	Upper	Upper	Upper
CTRAJK	1,215	1,190	1,120	1,260	1,215	Neutral	Bearish	Neutral	Middle Bands	Upper	Upper	Under
DILDJK	428	410	402	428	410	Neutral	Bearish	Neutral	Middle Bands	Upper	Under	Under
EXCLJK	3,630	3,510	3,350	3,610	3,450	Neutral	Bullish	Neutral	Middle Bands	Upper	Upper	Upper
GGRMJK	74,975	71,300	65,500	74,975	71,500	Neutral	Bearish	Neutral	Middle Bands	Upper	Under	Upper
GIAAJK	342	336	336	342	338	Neutral	Bullish	Neutral	Middle Bands	Under	Under	Under
QITLJK	1,000	960	960	980	970	Neutral	Bearish	Neutral	Middle Bands	Under	Under	Under
HEXAJK	4,110	4,100	4,050	4,150	4,060	Neutral	Bullish	Neutral	Middle Bands	Upper	Upper	Upper
HRUMJK	2,470	2,400	2,290	2,500	2,400	Neutral	Bullish	Neutral	Middle Bands	Upper	Upper	Upper
ICBPJK	8,675	8,600	8,200	8,800	8,700	Overbought	Bearish	Neutral	Middle Bands	Upper	Upper	Upper
IMASJK	1,140	955	1,020	1,075	1,015	Oversold	Bearish	Neutral	Lower Bands	Under	Under	Under
INCOJK	2,690	2,920	2,500	3,120	2,720	Overbought	Bearish	Overbought	Middle Bands	Upper	Upper	Upper
INDFJK	8,450	8,400	8,275	8,450	8,375	Neutral	Bullish	Neutral	Middle Bands	Upper	Under	Upper
INDYJK	930	1,195	840	1,280	950	Overbought	Bullish	Overbought	Upper Bands	Upper	Upper	Upper
INTAJK	318	286	272	316	290	Neutral	Bearish	Neutral	Middle Bands	Under	Under	Under
INTPJK	19,200	19,700	18,450	20,000	19,825	Neutral	Bearish	Neutral	Middle Bands	Upper	Upper	Upper
ITMGJK	20,825	20,225	19,900	20,825	20,250	Neutral	Bearish	Neutral	Middle Bands	Under	Upper	Upper
JFPAJK	1,225	1,145	1,100	1,225	1,180	Neutral	Bearish	Neutral	Middle Bands	Under	Under	Under
JSMRJK	5,625	5,575	5,400	5,625	5,475	Neutral	Bullish	Neutral	Middle Bands	Upper	Upper	Upper
KUJAJK	320	312	308	314	312	Neutral	Bearish	Neutral	Middle Bands	Under	Under	Upper
KLBFJK	1,795	1,725	1,680	1,795	1,755	Neutral	Bearish	Neutral	Middle Bands	Under	Upper	Upper
KRASJK	605	585	560	605	575	Neutral	Bullish	Neutral	Middle Bands	Upper	Under	Under
LPCKJK	4,890	4,670	4,270	4,890	4,740	Oversold	Bullish	Neutral	Middle Bands	Upper	Upper	Under
LPKRJK	795	780	755	800	790	Neutral	Bearish	Neutral	Middle Bands	Upper	Upper	Upper
LPPFJK	11,475	10,900	10,475	11,150	10,775	Neutral	Bullish	Neutral	Middle Bands	Under	Under	Under
LSIPJK	1,405	1,375	1,370	1,405	1,385	Neutral	Bearish	Neutral	Middle Bands	Under	Under	Under
MAINJK	965	930	920	965	940	Neutral	Bearish	Neutral	Middle Bands	Under	Under	Under
MAPIJK	6,850	6,700	6,350	7,000	6,625	Overbought	Bearish	Neutral	Middle Bands	Upper	Upper	Upper
MASAJK	220	206	198	208	202	Neutral	Bullish	Neutral	Middle Bands	Upper	Under	Under
MNCNJK	1,545	1,500	1,440	1,530	1,485	Neutral	Bullish	Neutral	Middle Bands	Under	Under	Under
MPPAJK	850	660	540	850	715	Neutral	Bearish	Neutral	Middle Bands	Upper	Under	Under
MTLAJK	322	358	340	366	348	Neutral	Bearish	Neutral	Middle Bands	Under	Upper	Upper
MYORJK	1,995	1,945	1,875	1,995	1,910	Neutral	Bearish	Neutral	Middle Bands	Upper	Under	Upper
PGASJK	2,230	2,180	2,110	2,230	2,190	Neutral	Bearish	Neutral	Middle Bands	Upper	Under	Under
PTBAJK	13,975	13,200	12,750	13,350	13,175	Neutral	Bullish	Neutral	Middle Bands	Under	Upper	Upper
RALSJK	1,025	1,030	925	1,045	1,015	Overbought	Bearish	Neutral	Middle Bands	Upper	Under	Under
ROTIJK	1,245	1,170	1,165	1,200	1,175	Oversold	Bullish	Neutral	Middle Bands	Under	Under	Under
SCMAJK	2,470	2,290	2,300	2,340	2,310	Oversold	Bullish	Neutral	Middle Bands	Under	Under	Under
SGROJK	2,010	2,020	1,950	2,020	1,960	Neutral	Bullish	Neutral	Upper Bands	Upper	Upper	Upper
SIMPJK	520	505	500	510	510	Neutral	Bearish	Neutral	Middle Bands	Under	Under	Under
SMCBJK	855	795	795	815	800	Neutral	Bearish	Neutral	Middle Bands	Under	Upper	Under
SMGRJK	10,750	10,750	10,650	10,950	10,800	Neutral	Bearish	Neutral	Middle Bands	Upper	Upper	Upper
SMRAJK	1,150	1,075	1,065	1,145	1,090	Neutral	Bearish	Neutral	Middle Bands	Upper	Under	Under
SRILJK	358	344	322	358	350	Neutral	Bearish	Neutral	Middle Bands	Under	Upper	Upper
SSIAJK	715	665	660	700	680	Neutral	Bearish	Neutral	Middle Bands	Under	Upper	Upper
SSMSJK	1,575	1,525	1,485	1,560	1,535	Neutral	Bearish	Neutral	Middle Bands	Upper	Under	Under
TLKMJK	4,820	4,780	4,730	4,820	4,800	Neutral	Bearish	Neutral	Middle Bands	Upper	Upper	Upper
TOTLJK	780	760	745	775	750	Neutral	Bearish	Neutral	Middle Bands	Upper	Upper	Under
UNTRJK	30,275	30,475	28,750	30,500	29,600	Neutral	Bullish	Neutral	Upper Bands	Upper	Upper	Upper
UNVRJK	48,100	49,500	48,075	50,000	49,300	Neutral	Bullish	Neutral	Middle Bands	Upper	Upper	Upper

Source - Reliance Research

### Legend :

- Movement: Bullish and Bearish (Indicator Stochastic)
- Momentum: Oversold, Overbought and Neutral (Indicator RSI)
- Resistance Fractal: Strong Resistance
- Support Fractal: Strong Support
- Green: Good Conditions
- Red: Poor Conditions

## HEAD OFFICE

### Reliance Building

Jl. Pluit Sakti Raya No. 27AB,  
Pluit  
Jakarta 14450  
T. +62 21 661 7768  
F. +62 21 661 9884

## RESEARCH DIVISION

### Robertus Yanuar Hardy

*robertus@reliance-securities.com*

### Rio Adrianus

*rio.adrianus@reliance-securities.com*

### Lanjar Nafi Taulat I

*lanjar@reliance-securities.com*

### Aji Setiawan

*aji@reliance-securities.com*

### Shanti Dwi Jayanti

*santi@reliance-securities.com*

Head of Research

Research Analyst

Technical Research Analyst

Associate Research Analyst

Associate Research Analyst

## EQUITY DIVISION

### Jakarta- Pluit

Jl. Pluit Sakti Raya No. 27AB,  
Pluit  
Jakarta 14450  
T. +62 21 661 7768  
F. +62 21 661 9884

### Bandung

Jl.Cisangkuy No.58  
Bandung 40115  
T. +62 22 721 8200  
F. +62 22 721 9255

### Surabaya - Gubeng

Jl. Bangka No. 22  
Surabaya 60281  
T. +62 31 501 1128  
F. +62 31 503 3196

### Makassar

Jl. Boto Lempangan No. 34 J  
Makassar- Sulawesi Selatan  
T. +62 411 3632388  
F. +62 411 3614634

### Jakarta - Sudirman

Menara Batavia Ground Floor  
Jl.KH.Mas Mansyur Kav 126  
Jakarta 10220  
T. +62 21 57905455  
F. +62 21 57950728

### Tasikmalaya

Ruko Tasik Indah Plaza No.21  
Jl. KHZ Mustofa No. 345  
Tasikmalaya 46121  
T. +62 265 345000  
F. +62 265 345003

### Surabaya – Diponegoro

Jl. Diponegoro No.26D  
Surabaya 60261  
T. +62 31 567 0388  
F. +62 31 561 0528

### Medan

Jl. Teuku Amir Hamzah No.40-O  
Medan 20117  
T. +62 61 6638592  
F. +62 61 6638023

### Jakarta – Kebon Jeruk

Plaza Kebon Jeruk  
Jl.Raya Perjuangan Blok A/2  
Jakarta 11530  
T. +62 21 532 4074  
F. +62 21 536 2157

### Malang

Jl. Guntur No. 19  
Malang 65112  
T. +62 341 347 611  
F. +62 341 347 615

### Bali - Denpasar

Dewata Square Blok A3  
Jl. Letda Tantular Renon  
Denpasar 802361  
T. +62 361 225099  
F. +62 361 245099

### Tangerang

Jl. Pahlawan Seribu Ruko BSD  
Sektor 7 Blok RK kav. 9  
Tangerang 15310  
T. +62 21 5387495  
F. +62 21 5387494

### Pekanbaru

Jl. Jendral Sudirman No.73  
Pekanbaru-Riau  
T. +62 761 848414  
F. +62 761 849456

### Pontianak

Jl. MT Haryono No. 6  
Pontianak 78121  
T. +62 561 575674  
F. +62 561 575670

### Solo

Jl. Slamet Riyadi 330<sup>a</sup>  
Solo 57145  
T. +62 271 736599  
F. +62 271 733478

### Balikpapan

Ruko Bukit Damai Indah  
Blok I, No. 3, Rt.34  
Jl. MT. Haryono, Gunung  
Bahagia, Balikpapan Selatan  
76114  
T. +62 542 746313  
F. +62 542 746317

## IDX CORNER & INVESTMENT GALLERY

### STIE Malangkecewara

Jl. Terusan Candi Kalasan  
Malang 65142  
T. +62 341 491813  
F. +62 341 495619

### Universitas Muhammadiyah Gresik

Jl. Sumatra 101 GKB  
Gresik 61121  
T. +62 31 3951414  
F. +62 31 3952585

### Universitas Surabaya

Jl. Raya Kalirungkut  
Surabaya 60293  
T. +62 31 2981203  
F. +62 31 2981204

### Universitas Muhammadiyah Malang

Jl. Raya Tlogomas 246  
Malang 65144  
T. +62 341 464318-9  
F. +62 341 460782

### Universitas Siliwangi Tasikmalaya

Jl. Siliwangi No. 24  
Tasikmalaya 46151  
T. +62 265 323685  
F. +62 265 323534

### Politeknik Kediri

Jl. Mayor Bismo No. 27  
Kediri 64121  
T. +62 354 683128  
F. +62 354 683128

### Universitas Negeri Malang

Jl. Surabaya No. 6  
Malang 65145  
T. +62 341 585914  
F. +62 341 55288

### Universitas Negeri Makassar

FakultasEkonomiGedung BT Lt. 2  
Jl. A. P. Pettarani, Kampus UNM, Gunungsari  
Baru  
Makassar 90222  
T. +62 411 889464, 881244  
F. +62 411 887604

### Universitas Muhammadiyah Pontianak

Jl. Ahmad Yani, No. 111  
Pontianak 78124  
T. +62 561 743465  
F. +62 561 766840

### STIE AAS

Jalan Slamet Riyadi No 361  
Kartasura, Surakarta  
T. +62 271 726156  
F. +62 271 726156

### Universitas Tanjungpura Pontianak

Jl. Jendral Ahmad Yani  
Pontianak 78124  
T. +62 561 743465  
F. +62 561 766840

### STIE "AUB" Surakarta

Jl. Mr. Sartono 97, Cengklik  
Nusukan, Surakarta 57135  
T. +62 271 854803  
F. +62 271 853084

### STIESIA Surabaya

Jl. MenurPumpungan 30  
Surabaya  
T. +62 31 5947505  
F. +62 31 5932218

### Universitas Muhammadiyah Sidoarjo

Jl. Majapahit 666 B  
Sidoarjo, JawaTimur  
T. +62 31 8945444  
F. +62 31 8949333

### Universitas Pesantren Tinggi Darul Ulum

Kompleks Pp Darul Ulu, Peterongan  
Jombang, JawaTimur 60281  
T. +62 321 873655  
F. +62 321 875771

### STIE Tri Bhakti

Jl. Teuku Umar No.24  
Cut Meutia Setiakawan, Bekasi  
T. +62 21 8242 9400, 8242 9500  
F. +62 271 726156

### STIKOM BALI

Jl. Raya Puputan No. 86, Renon, Denpasar  
Timur, kota Denpasar  
Bali-80234  
T. +62 361 244445

### Universitas 17 Agustus 1945 Banyuwangi

Jl. AdiSucipto 26  
Banyuwangi, JawaTimur  
T. +62 333 419163  
F. +62 333 419163

### IAIN Antasari

Jl. Ahmad Yani Km. 4,5 Banjarmasin  
T. +62 511 3267583

### Universitas Islam Kalimantan

Jl. Adiyaksa No.2, Kayu Tangi, Banjarmasin  
T. +62 511 3303871  
F. +62 511 3303871

## Disclaimer:

Information, opinions and recommendations contained in this document are presented by PT Reliance Sekuritas Indonesia Tbk. from sources that are considered reliable and dependable. This document is not an offer, invitation or any kind of representations to decide to buy or sell stock. Investment decisions taken based on this document is not the responsibility of PT Reliance Sekuritas Indonesia Tbk. PT Reliance Sekuritas Indonesia Tbk. reserves the right to change the contents of this document at any time without prior notice.