

Market View

IHSG (-0.26%) ditutup turun -15.13 poin sebesar 5888.21 seiring pelemahan mayoritas indeks saham di Asia. Indeks industri dasar (-1.43%) dan aneka industri (-1.06%) memimpin pelemahan. Sedangkan indeks sektor konsumsi (+0.11%) dan property (+0.56%) berhasil menjadi penahan pelemahan diakhir sesi. Aksi jual investor asing menghantui dimana pada pasar reguler tercatat net sell 466.77 Miliar rupiah dan pasar negosiasi net sell 755.2 Miliar rupiah sehingga total terjadi aksi jual sebesar 1.22 Triliun rupiah.

Leaders:

OKAS (+34.48%), ARTA (+25.00%), ALKA (+23.26%)

Laggards:

TPIA (-6.80%), MYOH (-5.56%), BIPI (-5.36%)

Pergerakan IHSG secara teknikal terkonfirmasi break out support MA5 (5903) dengan mencoba melakukan pengujian support bullish trend dan MA20 (5842). Indikator stochastick berbergerak negatif setelah dead-cross pada area jenuh beli sehingga diperkirakan IHSG masih akan bergerak mixed cenderung mencoba menguat dengan range pergerakan 5842-5903. Saham-saham yang masih dapat diperhatikan diantaranya BSDE, KLBF, SMGR, WIKA, MAIN, BJTM, ISAT.

Indeks saham Nikkei (+0.67%), Topix (+0.55%) dan Kospi (+0.03%) mengawali aksi rebound mayoritas indeks saham di Asia setelah pada perdagangan sebelumnya tertekan signifikan akibat kekhawatiran geopolitik Korea Utara dan Jepang. Harga komoditas masih dalam pergerakan positif pagi ini dimana harga nikel (+1.96%) dan timah (+0.12%) naik sedangkan batubara NC (-0.72%) terkoreksi.

IHSG Technical Review



Analyst:
Lanjar Nafi

lanjar@reliancesekuritas.com
+62 21 5793 0008 ext. 604

your **reliable** partner | 1

BSDE



BUY

Analisis:

- *Candlestick* membentuk pola *bullish engulfing* dengan indikasi *rebound* di level MA200 dan menguat jangka pendek.
- Batasan *stop-loss* jika harga saham *break out* pada level *support* MA200.
- Indikator *Stochastic* bergerak pada area jenuh jual dengan indikasi *golden-cross*.
- **Support** : 1775-1820
- **Resistance** : 1870-1910
- **Stop-loss** : 1810
- **Target price** : 1910

ISAT

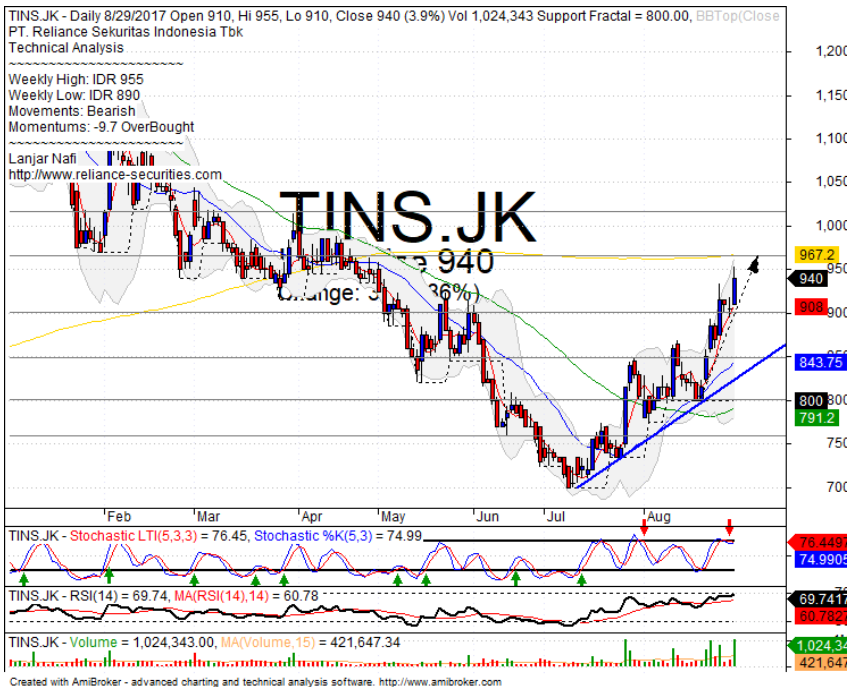


BUY

Analisis:

- Bergerak *whipsaw* pada trend positif. Memberikan peluang penguatan hingga target penguatan *channeling trend* dan MA50.
- Batasan *stop-loss* jika harga terkonfirmasi *break out* bullish trend sebagai *support*.
- Indikator *Stochastic* yang telah membentuk pola *golden-cross* pada level jenuh jual dengan potensi penguatan. Namun indikator RSI yang terlihat *flat momentum* pada level tengah osilator.
- **Support** : 6000-6200
- **Resistance** : 6500-6750
- **Stop-loss** : 6325
- **Target Price** : 6570-6750

TINS



SELL ON STRENGTH

Analisis:

- Harga saham telah mencapai target penguatan MA200 dengan momentum yang terlihat jenuh beli pada indicator RSI. Indikasi koreksi jangka pendek. Volume perdagangan yang cukup tinggi.
 - Batasan *stop-loss* jika harga saham terkonfirmasi pulled back MA200.
 - Indikator *Stochastic* telah membentuk pola *dead-cross* pada area jenuh beli
- **Support** : 850-900
 - **Resistance** : 965-1015
 - **Stop-loss** : 930
 - **Target Price** : 965
 - **Downside** : 855

KLBF



BUY

Analisis:

- *Candlestick* membentuk pola *bullish engulfing* dengan indikasi menguat jangka pendek menguji resistance level.
 - Batasan *stop-loss* jika harga saham berbalik turun dibawah 3%
 - Indikator *stochastic* bergerak membentuk pola *golden-cross* pada area jenuh jual. Dengan Indikator RSI yang mencoba memiliki penguatan momentum yang terbatas.
- **Support** : 1700-1740
 - **Resistance** : 1775-1825
 - **Stop-loss** : 1720
 - **Target Price** : 1775-1810

Stocks	S2	S1	Closing Price	R1	R2	Technical Notes	Rec	Stop Loss	Rec Buy Prc	Target Price
Plantation										
AALI	14,850	15,000	15,125	15,400	15,725	Pulled back MA200	S	15,000		
LSIP	1,330	1,365	1,375	1,400	1,475	Consolidations	TB	1,360		1,415
Mining										
INCO	2,670	2,850	2,960	3,000	3,200	Consolidations	W	2,840		
Consumer										
UNVR	48,300	49,500	50,500	50,800	52,000	Overbought	H	50,100		51,000
INDF	8,100	8,500	8,675	8,750	8,950	Overbought	PS	8,475		
KLBF	1,660	1,700	1,745	1,755	1,810	Stoch golden-cross	B	1,680	1,740	1,800
Trading										
ACES	950	1,000	1,030	1,050	1,100	Break out support	W	1,040		
AKRA	6,500	6,750	6,850	7,000	7,200	Bullish momentum	B	6,700	6,800	7,000
UNTR	29,225	30,475	30,600	31,700	32,500	Bullish momentum	SB	30,400		30,300
Property & Construction										
LPCK	4,200	4,400	4,570	4,610	4,770	Oversold	TB	4,550		4,700
WIKA	1,900	1,970	1,990	2,070	2,110	Rectangle	TB	1,950		2,070
BSDE	1,770	1,820	1,845	1,870	1,910	Rebounded at bullish trend	SB	1,820	1,840	1,910
WSKT	2,180	2,230	2,280	2,290	2,350	Consolidations	TB	2,220		2,350
ADHI	1,870	1,950	2,010	2,030	2,110	Oversold	W	1,940		
Basic Industry & Chemical										
SMGR	9,900	10,200	10,475	10,700	11,100	Consolidations	W	10,200		
CPIN	2,700	2,800	2,850	2,900	3,000	Bullish momentum	SB	2,780		3,000
MAIN	860	920	945	960	1,020	Stoch golden-cross	SB	900	940	1,015
INTP	18,375	19,000	19,800	19,525	20,050	Consolidations	H	19,700		20,050
Miscellaneous										
SRIL	316	356	362	400	440	Consolidations	H	350		400
ASII	7,625	7,900	7,900	8,150	8,350	Bullish momentum	TB	7,900		8,150
Finance										
BBTN	2,840	2,900	2,950	3,000	3,080	Consolidations	H	2,890		3,000
BMRI	12,450	13,000	13,100	13,500	13,900	Consolidations	W	13,000		
BTPN	2,440	2,490	2,550	2,550	2,590	Consolidations	PS	2,540		
BJBR	2,320	2,480	2,590	2,690	2,840	Consolidations	W	2,480		
BBRI	14,200	14,775	14,975	15,200	15,500	Bearish momentum	S	14,700		
Infrastructure										
TLKM	4,400	4,570	4,730	4,800	5,025	Bearish momentum	S	4,730		
PGAS	2,040	2,120	2,130	2,210	2,400	Bearish momentum	S	2,120		

Source : Reliance Sekuritas Indonesia

Analyst Conclusions:

The index still bearish consolidations after reached the all time high level.

Legend :

- B: BUY (allocate till 100% of the weighted capital to accumulate, higher than 50% upside probability)
- SB: SPECULATIVE BUY (allocate 25%-50% of the weighted capital to accumulate, 25%-50% upside probability)
- W: WAIT (wait for proper entry level, do the stop-loss if necessary)
- H: HOLD (hold the portfolio position, aim for the best price to distribute)
- PS: PARTIAL SELL (distribute 25%-50% part of the portfolio, 25%-50% downside probability)
- S: SELL (distribute till 100% of the portfolio, higher than 50% downside probability)
- TB: TRADING BUY (short term or intraday trading within a tight trading range. Highly speculative).

Ticker	Resistance	Price	Support	Weekly		Indicator			Moving Average			
	Fractal	8/29/2017	Fractal	High	Low	Stochastic	RSI	B. Band	20 Days	50 Days	200 Days	
AALI.JK	15,325	15,125	14,650	15,325	15,150	Neutral	Bearish	Neutral	Middle Bands	Upper	Upper	Under
ACES.JK	1,100	1,030	1,040	1,095	1,065	Neutral	Bearish	Neutral	Lower Bands	Under	Under	Upper
ADHI.JK	2,130	2,010	2,010	2,130	2,030	Oversold	Bearish	Neutral	Lower Bands	Under	Under	Under
ADRO.JK	1,995	1,870	1,850	1,995	1,950	Neutral	Bearish	Neutral	Middle Bands	Under	Upper	Upper
AISA.JK	1,085	1,050	1,030	1,085	1,060	Neutral	Bearish	Neutral	Middle Bands	Under	Under	Under
AKRA.JK	6,825	6,850	6,500	6,925	6,600	Neutral	Bullish	Neutral	Upper Bands	Upper	Upper	Upper
ANTM.JK	755	730	670	755	725	Neutral	Bearish	Neutral	Middle Bands	Upper	Upper	Under
APLN.JK	246	238	226	240	232	Neutral	Bullish	Neutral	Middle Bands	Upper	Upper	Upper
ASII.JK	8,050	7,900	7,775	8,050	7,950	Neutral	Bearish	Neutral	Middle Bands	Upper	Under	Under
ASRI.JK	362	358	344	374	362	Oversold	Bearish	Neutral	Middle Bands	Upper	Upper	Under
BBCA.JK	19,200	19,075	18,500	19,200	19,075	Neutral	Bearish	Neutral	Middle Bands	Upper	Upper	Upper
BBKJ.JK	610	600	595	605	605	Neutral	Bullish	Neutral	Middle Bands	Under	Under	Under
BBNI.JK	7,450	7,350	7,325	7,450	7,400	Neutral	Bearish	Neutral	Middle Bands	Upper	Upper	Upper
BBRI.JK	15,000	14,975	15,150	15,350	15,175	Neutral	Bearish	Neutral	Middle Bands	Under	Upper	Upper
BBTN.JK	3,030	2,950	2,800	3,030	2,900	Neutral	Bullish	Overbought	Middle Bands	Upper	Upper	Upper
BDMN.JK	5,625	5,525	5,375	5,600	5,475	Neutral	Bullish	Neutral	Middle Bands	Upper	Upper	Upper
BHIT.JK	104	98	98	100	99	Oversold	Bullish	Oversold	Middle Bands	Under	Under	Under
BBJR.JK	2,990	2,590	2,510	2,750	2,600	Neutral	Bearish	Neutral	Middle Bands	Upper	Upper	Upper
BJTM.JK	740	690	690	725	695	Oversold	Bearish	Neutral	Middle Bands	Under	Upper	Upper
BKSL.JK	142	150	129	156	146	Overbought	Bearish	Overbought	Middle Bands	Upper	Upper	Upper
BMRI.JK	13,375	13,100	13,050	13,375	13,225	Neutral	Bearish	Neutral	Lower Bands	Under	Under	Upper
BMTR.JK	515	484	490	498	490	Neutral	Bullish	Oversold	Lower Bands	Under	Under	Under
BSDE.JK	1,850	1,845	1,770	1,875	1,835	Neutral	Bullish	Neutral	Middle Bands	Upper	Upper	Upper
BTPN.JK	2,600	2,550	2,540	2,570	2,550	Neutral	Bullish	Neutral	Middle Bands	Upper	Upper	Under
BWPT.JK	224	216	212	226	220	Neutral	Bearish	Neutral	Middle Bands	Under	Under	Under
CMNP.JK	1,370	1,370	1,330	1,400	1,345	Neutral	Bullish	Neutral	Middle Bands	Upper	Upper	Under
CPIN.JK	2,840	2,850	2,800	2,900	2,840	Neutral	Bullish	Neutral	Middle Bands	Upper	Under	Under
CSAP.JK	500	482	456	500	486	Neutral	Bearish	Neutral	Middle Bands	Upper	Upper	Under
CTRA.JK	1,260	1,170	1,175	1,260	1,185	Neutral	Bearish	Neutral	Middle Bands	Upper	Upper	Under
DILD.JK	428	408	406	428	410	Neutral	Bearish	Neutral	Middle Bands	Under	Under	Under
EXCL.JK	3,660	3,630	3,350	3,660	3,590	Overbought	Bullish	Neutral	Middle Bands	Upper	Upper	Upper
GGRM.JK	72,100	71,500	70,400	72,100	71,500	Neutral	Bullish	Neutral	Middle Bands	Upper	Under	Upper
GIAA.JK	342	330	330	340	334	Neutral	Bearish	Neutral	Lower Bands	Under	Under	Under
GJTL.JK	1,000	960	960	985	975	Neutral	Bearish	Neutral	Middle Bands	Under	Under	Under
HEXA.JK	4,190	4,150	4,050	4,190	4,130	Neutral	Bullish	Neutral	Middle Bands	Upper	Upper	Upper
HRUM.JK	2,500	2,370	2,290	2,500	2,410	Neutral	Bearish	Neutral	Middle Bands	Under	Upper	Upper
ICBP.JK	8,875	8,675	8,525	8,875	8,725	Neutral	Bullish	Neutral	Middle Bands	Upper	Upper	Upper
IMAS.JK	1,140	920	1,020	1,035	945	Oversold	Bullish	Neutral	Middle Bands	Under	Under	Under
INCO.JK	3,120	2,960	2,500	3,120	2,940	Neutral	Bearish	Overbought	Middle Bands	Upper	Upper	Upper
INDF.JK	8,450	8,675	8,275	8,700	8,375	Overbought	Bullish	Neutral	Upper Bands	Upper	Upper	Upper
INDY.JK	930	1,275	840	1,330	1,225	Overbought	Bearish	Overbought	Middle Bands	Upper	Upper	Upper
INTA.JK	318	284	272	298	284	Oversold	Bullish	Neutral	Middle Bands	Under	Upper	Under
INTP.JK	20,000	19,800	18,450	20,000	19,700	Neutral	Bearish	Neutral	Middle Bands	Upper	Upper	Upper
ITMG.JK	20,825	19,200	19,900	20,450	20,225	Oversold	Bearish	Neutral	Lower Bands	Under	Under	Upper
JPFA.JK	1,225	1,155	1,140	1,195	1,170	Oversold	Bullish	Neutral	Middle Bands	Under	Under	Under
JSMR.JK	5,625	5,625	5,400	5,625	5,500	Overbought	Bullish	Neutral	Upper Bands	Upper	Upper	Upper
KIJA.JK	320	310	308	312	312	Neutral	Bearish	Neutral	Middle Bands	Under	Under	Upper
KLBF.JK	1,795	1,745	1,680	1,775	1,725	Oversold	Bullish	Neutral	Middle Bands	Upper	Upper	Upper
KRAS.JK	605	570	560	595	580	Neutral	Bearish	Neutral	Middle Bands	Under	Under	Under
LPCK.JK	4,890	4,570	4,270	4,790	4,640	Oversold	Bearish	Neutral	Lower Bands	Under	Upper	Under
LPKR.JK	795	795	770	800	790	Neutral	Bullish	Neutral	Middle Bands	Upper	Upper	Upper
LPFF.JK	11,025	10,375	10,475	11,025	10,600	Neutral	Bearish	Neutral	Middle Bands	Under	Under	Under
LSIP.JK	1,395	1,375	1,365	1,395	1,380	Neutral	Bullish	Neutral	Middle Bands	Under	Under	Under
MAIN.JK	965	945	920	950	935	Neutral	Bullish	Neutral	Upper Bands	Upper	Under	Under
MAPI.JK	7,000	6,875	6,550	7,000	6,850	Neutral	Bullish	Neutral	Middle Bands	Upper	Upper	Upper
MASA.JK	220	204	198	208	206	Neutral	Bearish	Neutral	Middle Bands	Under	Under	Under
MNCN.JK	1,545	1,500	1,440	1,510	1,495	Neutral	Bullish	Neutral	Middle Bands	Under	Under	Under
MPPA.JK	850	645	540	760	675	Oversold	Bearish	Neutral	Middle Bands	Upper	Under	Under
MTLA.JK	322	342	340	358	344	Neutral	Bearish	Neutral	Lower Bands	Under	Under	Upper
MYOR.JK	1,995	1,985	1,875	2,000	1,910	Neutral	Bullish	Neutral	Middle Bands	Upper	Under	Upper
PGAS.JK	2,230	2,130	2,110	2,190	2,150	Neutral	Bearish	Neutral	Middle Bands	Under	Under	Under
PTBA.JK	13,350	12,975	12,750	13,350	13,050	Neutral	Bearish	Neutral	Middle Bands	Under	Upper	Upper
RALS.JK	1,060	1,010	990	1,060	1,020	Neutral	Bearish	Neutral	Middle Bands	Upper	Under	Under
ROTI.JK	1,245	1,190	1,165	1,200	1,175	Neutral	Bullish	Neutral	Middle Bands	Under	Under	Under
SCMA.JK	2,470	2,230	2,250	2,340	2,290	Neutral	Bearish	Neutral	Middle Bands	Under	Under	Under
SGRO.JK	2,010	2,080	1,950	2,080	2,000	Overbought	Bullish	Neutral	Upper Bands	Upper	Upper	Upper
SIMP.JK	520	505	500	510	510	Neutral	Bearish	Neutral	Middle Bands	Under	Under	Under
SMCB.JK	855	800	795	800	800	Oversold	Bullish	Neutral	Middle Bands	Under	Upper	Under
SMGR.JK	10,950	10,475	10,650	10,950	10,600	Oversold	Bearish	Neutral	Lower Bands	Under	Upper	Upper
SMRA.JK	1,145	1,060	1,065	1,145	1,090	Neutral	Bullish	Neutral	Middle Bands	Under	Under	Under
SRIL.JK	358	362	344	366	350	Neutral	Bullish	Neutral	Upper Bands	Upper	Upper	Upper
SSIA.JK	715	655	660	690	670	Neutral	Bullish	Neutral	Middle Bands	Under	Under	Upper
SSMS.JK	1,575	1,525	1,485	1,540	1,525	Neutral	Bullish	Neutral	Middle Bands	Upper	Under	Under
TLKM.JK	4,820	4,730	4,730	4,810	4,760	Neutral	Bearish	Neutral	Middle Bands	Under	Upper	Upper
TOTL.JK	775	750	745	775	755	Neutral	Bearish	Neutral	Middle Bands	Under	Upper	Under
UNTR.JK	30,275	30,600	28,750	31,000	29,700	Overbought	Bearish	Neutral	Middle Bands	Upper	Upper	Upper
UNVR.JK	48,100	50,500	48,075	50,550	49,925	Neutral	Bullish	Neutral	Middle Bands	Upper	Upper	Upper

Source : Reliance Research

Legend :

- Movement: Bullish and Bearish (Indicator Stochastic)
- Momentum: Oversold, Overbought and Neutral (Indicator RSI)
- Resistance Fractal: Strong Resistance
- Support Fractal: Strong Support
- Green: Good Conditions
- Red: Poor Conditions

HEAD OFFICE

Reliance Building

Jl. Pluit Sakti Raya No. 27AB,
Pluit
Jakarta 14450
T. +62 21 661 7768
F. +62 21 661 9884

RESEARCH DIVISION

Robertus Yanuar Hardy

robertus@reliance-securities.com

Rio Adrianus

rio.adrianus@reliance-securities.com

Lanjar Nafi Taulat I

lanjar@reliance-securities.com

Aji Setiawan

aji@reliance-securities.com

Shanti Dwi Jayanti

santi@reliance-securities.com

Head of Research

Research Analyst

Technical Research Analyst

Associate Research Analyst

Associate Research Analyst

EQUITY DIVISION

Jakarta- Pluit

Jl. Pluit Sakti Raya No. 27AB,
Pluit
Jakarta 14450
T. +62 21 661 7768
F. +62 21 661 9884

Bandung

Jl.Cisangkuy No.58
Bandung 40115
T. +62 22 721 8200
F. +62 22 721 9255

Surabaya - Gubeng

Jl. Bangka No. 22
Surabaya 60281
T. +62 31 501 1128
F. +62 31 503 3196

Makassar

Jl. Boto Lempangan No. 34 J
Makassar- Sulawesi Selatan
T. +62 411 3632388
F. +62 411 3614634

Jakarta - Sudirman

Menara Batavia Ground Floor
Jl.KH.Mas Mansyur Kav 126
Jakarta 10220
T. +62 21 57905455
F. +62 21 57950728

Tasikmalaya

Ruko Tasik Indah Plaza No.21
Jl. KHZ Mustofa No. 345
Tasikmalaya 46121
T. +62 265 345000
F. +62 265 345003

Surabaya - Diponegoro

Jl. Diponegoro No.26D
Surabaya 60261
T. +62 31 567 0388
F. +62 31 561 0528

Medan

Jl. Teuku Amir Hamzah No.40-O
Medan 20117
T. +62 61 6638592
F. +62 61 6638023

Jakarta - Kebon Jeruk

Plaza Kebon Jeruk
Jl.Raya Perjuangan Blok A/2
Jakarta 11530
T. +62 21 532 4074
F. +62 21 536 2157

Malang

Jl. Guntur No. 19
Malang 65112
T. +62 341 347 611
F. +62 341 347 615

Bali - Denpasar

Dewata Square Blok A3
Jl. Letda Tantular Renon
Denpasar 802361
T. +62 361 225099
F. +62 361 245099

Tangerang

Jl. Pahlawan Seribu Ruko BSD
Sektor 7 Blok RK kav. 9
Tangerang 15310
T. +62 21 5387495
F. +62 21 5387494

Pekanbaru

Jl. Jendral Sudirman No.73
Pekanbaru-Riau
T. +62 761 848414
F. +62 761 849456

Pontianak

Jl. MT Haryono No. 6
Pontianak 78121
T. +62 561 575674
F. +62 561 575670

Solo

Jl. Slamet Riyadi 330^a
Solo 57145
T. +62 271 736599
F. +62 271 733478

Balikpapan

Ruko Bukit Damai Indah
Blok I, No. 3, Rt.34
Jl. MT. Haryono, Gunung
Bahagia, Balikpapan Selatan
76114
T. +62 542 746313
F. +62 542 746317

IDX CORNER & INVESTMENT GALLERY

STIE Malangkeucwara

Jl. Terusan Candi Kalasan
Malang 65142
T. +62 341 491813
F. +62 341 495619

Universitas Muhammadiyah Gresik

Jl. Sumatra 101 GKB
Gresik 61121
T. +62 31 3951414
F. +62 31 3952585

Universitas Surabaya

Jl. Raya Kalirungkut
Surabaya 60293
T. +62 31 2981203
F. +62 31 2981204

Universitas Muhammadiyah Malang

Jl. Raya Tlogomas 246
Malang 65144
T. +62 341 464318-9
F. +62 341 460782

Universitas Siliwangi Tasikmalaya

Jl. Siliwangi No. 24
Tasikmalaya 46151
T. +62 265 323685
F. +62 265 323534

Politeknik Kediri

Jl. Mayor Bismo No. 27
Kediri 64121
T +62 354 683128
F +62 354 683128

Universitas Negeri Malang

Jl. Surabaya No. 6
Malang 65145
T. +62 341 585914
F. +62 341 55288

Universitas Negeri Makassar

FakultasEkonomiGedung BT Lt. 2
Jl. A. P. Pettarani, Kampus UNM, Gunungsari
Baru
Makassar 90222
T. +62 411 889464, 881244
F. +62 411 887604

Universitas Muhammadiyah Pontianak

Jl. Ahmad Yani, No. 111
Pontianak 78124
T. +62 561 743465
F. +62 561 766840

STIE AAS

Jalan Slamet Riyadi No 361
Kartasura, Surakarta
T. +62 271 726156
F. +62 271 726156

Universitas Tanjungpura Pontianak

Jl. Jendral Ahmad Yani
Pontianak 78124
T. +62 561 743465
F. +62 561 766840

STIE "AUB" Surakarta

Jl. Mr. Sartono 97, Cengklik
Nusukan, Surakarta 57135
T. +62 271 854803
F. +62 271 853084

STIESIA Surabaya

Jl. MenurPumpungan 30
Surabaya
T. +62 31 5947505
F. +62 31 5932218

Universitas Muhammadiyah Sidoarjo

Jl. Majapahit 666 B
Sidoarjo, JawaTimur
T. +62 31 8945444
F. +62 31 8949333

Universitas Pesantren Tinggi Darul Ulum

Kompleks Pp Darul Ulu, Peterongan
Jombang, JawaTimur 60281
T. +62 321 873655
F. +62 321 875771

STIE Tri Bhakti

Jl. Teuku Umar No.24
Cut Meutia Setiakawan, Bekasi
T. +62 21 8242 9400, 8242 9500
F. +62 271 726156

STIKOM BALI

Jl. Raya Puputan No. 86, Renon, Denpasar
Timur, kota Denpasar
Bali-80234
T. +62 361 244445

Universitas 17 Agustus 1945 Banyuwangi

Jl. AdiSucipto 26
Banyuwangi, JawaTimur
T. +62 333 419163
F. +62 333 419163

IAIN Antasari

Jl. Ahmad Yani Km. 4,5 Banjarmasin
T. +62 511 3267583

Universitas Islam Kalimantan

Jl. Adiyaksa No.2, Kayu Tangi, Banjarmasin
T. +62 511 3303871
F. +62 511 3303871

Disclaimer:

Information, opinions and recommendations contained in this document are presented by PT Reliance Sekuritas Indonesia Tbk. from sources that are considered reliable and dependable. This document is not an offer, invitation or any kind of representations to decide to buy or sell stock. Investment decisions taken based on this document is not the responsibility of PT Reliance Sekuritas Indonesia Tbk. PT Reliance Sekuritas Indonesia Tbk. reserves the right to change the contents of this document at any time without prior notice.