

Market View

Mengikuti mayoritas bursa di Asia, IHSG (-0.86%) tertekan cukup dalam -50.32 poin dilevel 5813.74 dengan Indeks sektor industri dasar (-1.66%) dan aneka industri (-1.45%) hingga pertambahan (-1.43%) memimpin pelemahan. Pertumbuhan pinjaman meningkat menjadi 8.2% hingga data tingkat inflasi tahunan yang stabil 3.82% disertai indeks kinerja Manufaktur naik diatas ekspektasi tidak mampu menahan aksi jual investor pada perdagangan awal pekan ini. Aksi jual investor asing diawal bulan september dibuka net sell sebesar 562.20 Miliar rupiah. Beberapa investor memilih untuk menahan diri pada pembelian ekuitas dalam menghadapi meningkatnya ketidakstabilan geopolitik.

Leaders:

META (+31.11%), CMPP (+24.74%), CANI (+24.44%)

Laggards:

VICO (-15.61%), MFMI (-15.07%), JGLE (-14.78%)

Secara teknikal IHSG tidak berhasil menguji support MA20 dan patah hingga menyentuh level support MA50. Indikator Stochastic bergerak liat tertekan pada hari ini hingga pada area oversold namun tekanan jual masih terlihat pada momentum RSI yang cukup signifikan mengalami pelemahan. Sehingga diperkirakan IHSG akan bergerak mixed mencoba whipsaw pada level MA50 pada rentan 5764-5850. Saham-saham yang masih dapat menjadi perhatian untuk trading jangka pendek diantaranya saham yang telah mengalami koreksi yang cukup signifikan diawal pekan CPIN, PTBA, SMGR, ADRO, TBIG, HRUM, KLBF.

IHSG Technical Review



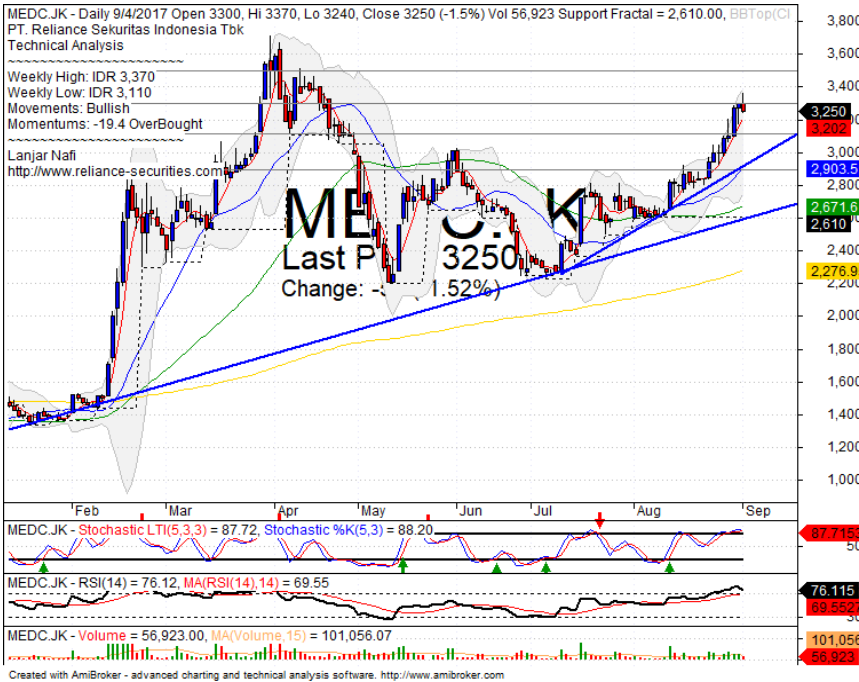
Analyst:
Lanjar Nafi

lanjar@reliancesekuritas.com

+62 21 5793 0008 ext. 604

your **reliable** partner | 1

MEDC

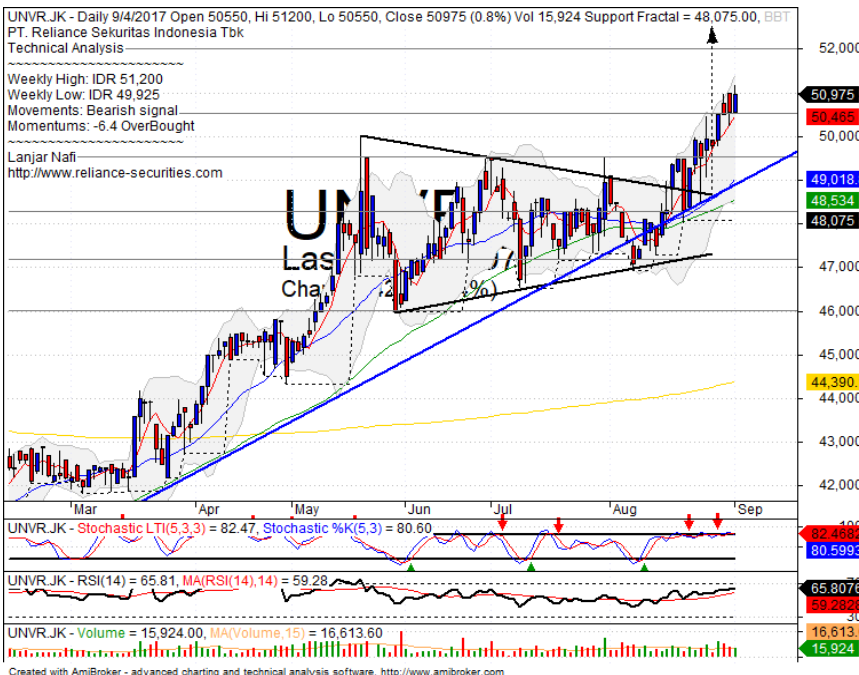


SELL

Analisis:

- Candlestick membentuk pola *Bearish engulfing* dengan *pulled back upper Bollinger bands*.
 - Batasan *stop-loss* jika harga saham *break out MA7 support level*.
 - Indikator *Stochastic* berpola *dead-cross* pada level jenuh *overbought* dengan *bearish reversal momentum* dari indikator RSI.
- Support : 2890-3110
 - Resistance : 3300-3500
 - Stop-loss : 3150
 - Downside : 2900

UNVR



SELL ON STRENGTH

Analisis:

- Harga saham menguat setelah mengkonfirmasi pola *symmetrical triangle*.
 - Batasan *stop-loss* jika harga terkonfirmasi turun kembali menguji support.
 - Indikator *Stochastic* membentuk pola *dead-cross* pada level jenuh beli dengan potensi koreksi jangka pendek.
- Support : 49500-50550
 - Resistance : 52000-53200
 - Stop-loss : 50400
 - Target Price : 52000

KLBF



TRADING BUY

Analisis:

- Harga menguji MA50. Berpeluang besar *whipsaw* jika rebound pada level MA50.
- Batasan *stop-loss* jika harga saham terkonfirmasi *break out* MA50.
- Indikator *Stochastic* telah berindikasi membentuk pola *golden-cross* pada area *oversold*.
- **Support** : 1620-1660
- **Resistance** : 1700-1740
- **Stop-loss** : 1675
- **Target Price** : 1770

HRUM



SPECULATIVE BUY

Analisis:

- Harga saham menguji MA200 dan MA50. Berpeluang *rebound* dan *Whipsaw bullish trend*.
- Batasan *stop-loss* jika harga saham berbalik turun *break out* support level.
- Indikator *stochastic* bergerak berbalik menguat membentuk pola *golden-cross* pada area jenuh jual.
- **Support** : 2200-2300
- **Resistance** : 2390-2500
- **Stop-loss** : 2270
- **Target Price** : 2390-2460

Stocks	S2	S1	Closing Price	R1	R2	Technical Notes	Rec	Stop Loss	Rec Buy Prc	Target Price
Plantation										
AALI	14,350	14,600	14,700	14,850	15,000	Break out support level	S	14,500		
LSIP	1,330	1,360	1,360	1,400	1,475	Consolidations	W	1,340		
Mining										
INCO	2,670	2,850	3,010	3,020	3,200	Bellow the stomach	PS	2,840		
Consumer										
UNVR	48,300	49,500	50,975	51,000	52,000	Overbought	PS	50,400		
INDF	8,150	8,325	8,375	8,500	8,750	Bearish momentum	S	8,300		
KLBF	1,620	1,660	1,695	1,700	1,755	Touching the MA50	TB	1,680		1,800
Trading										
ACES	1,000	1,050	1,055	1,100	1,145	Pulled back bearish trend	PS	1,040		
AKRA	6,500	6,750	6,850	7,000	7,200	Consolidations	H	6,700		7,000
UNTR	28,000	29,225	29,700	30,475	31,700	Bearish momentum	S	29,200		
Property & Construction										
LPCK	4,380	4,610	4,680	4,770	5,000	Consolidations	W	4,600		
WIKA	1,830	1,900	1,925	1,970	2,070	Broke support level	TB	1,900		2,070
BSDE	1,770	1,820	1,820	1,870	1,910	Consolidations	W	1,800		
WSKT	2,070	2,130	2,140	2,180	2,200	Bearish momentum	TB	2,120		2,200
ADHI	1,870	1,950	1,995	2,030	2,110	Oversold	TB	1,940		2,150
Basic Industry & Chemical										
SMGR	9,600	9,900	9,975	10,200	10,700	Bearish significant	TB	9,800		11,200
CPIN	2,600	2,700	2,730	2,800	2,900	Inverted hammer	TB	2,680		2,900
MAIN	850	900	900	960	1,020	Consolidations	TB	900		1,015
INTP	18,000	18,400	18,900	19,000	19,525	Consolidations	H	18,300		20,000
Miscellaneous										
SRIL	316	356	360	400	440	Consolidations	PS	350		
ASII	7,400	7,625	7,750	7,900	8,150	Bearish momentum	W	7,600		
Finance										
BBTN	2,900	3,000	3,050	3,080	3,200	Overbought	H	2,970		3,080
BMRI	12,450	13,000	13,050	13,500	13,900	Oversold	TB	13,000		13,500
BTPN	2,440	2,490	2,540	2,550	2,590	Consolidations	W	2,480		
BJBR	2,320	2,480	2,530	2,690	2,840	Consolidations	TB	2,480		2,730
BBRI	14,200	14,775	14,875	15,200	15,500	Consolidations	TB	14,700		15,200
Infrastructure										
TLKM	4,400	4,570	4,680	4,800	5,025	Stoch golden-cross	TB	4,730		4,800
PGAS	1,900	1,985	1,985	2,040	2,120	Break out support level	TB	1,980		2,000

Source : Reliance Sekuritas Indonesia

Analyst Conclusions:

The index still bearish consolidations after reached the all time high level.

Legend :

- B: BUY (allocate till 100% of the weighted capital to accumulate, higher than 50% upside probability)
- SB: SPECULATIVE BUY (allocate 25%-50% of the weighted capital to accumulate, 25%-50% upside probability)
- W: WAIT (wait for proper entry level, do the stop-loss if necessary)
- H: HOLD (hold the portfolio position, aim for the best price to distribute)
- PS: PARTIAL SELL (distribute 25%-50% part of the portfolio, 25%-50% downside probability)
- S: SELL (distribute till 100% of the portfolio, higher than 50% downside probability)
- TB: TRADING BUY (short term or intraday trading within a tight trading range. Highly speculative).

Ticker	Resistance Fractal	Price 9/4/2017	Support Fractal	Weekly High	Weekly Low	Indicator			Moving Average			
						Stochastic	RSI	B. Band	20 Days	50 Days	200 Days	
AALI.JK	15,325	14,700	14,650	15,275	14,950	Neutral	Bearish	Neutral	Middle Bands	Under	Under	Under
ACES.JK	1,095	1,055	1,005	1,095	1,060	Neutral	Bullish	Neutral	Middle Bands	Under	Under	Upper
ADHI.JK	2,130	1,995	2,010	2,050	2,030	Oversold	Bullish	Neutral	Middle Bands	Under	Under	Under
ADRO.JK	1,995	1,815	1,850	1,965	1,840	Oversold	Bearish	Neutral	Middle Bands	Under	Upper	Upper
AISA.JK	1,070	1,020	1,025	1,070	1,035	Neutral	Bearish	Oversold	Middle Bands	Under	Under	Under
AKRA.JK	6,825	6,850	6,500	6,950	6,775	Neutral	Bearish	Neutral	Upper Bands	Upper	Upper	Upper
ANTM.JK	765	710	710	765	725	Neutral	Bearish	Neutral	Middle Bands	Upper	Upper	Under
APLN.JK	240	236	226	240	238	Neutral	Bearish	Neutral	Middle Bands	Upper	Upper	Upper
ASII.JK	8,050	7,750	7,825	8,025	7,925	Neutral	Bearish	Neutral	Lower Bands	Under	Under	Under
ASRI.JK	362	346	352	368	360	Neutral	Bearish	Neutral	Lower Bands	Under	Upper	Under
BBCA.JK	19,200	18,875	18,875	19,200	19,000	Neutral	Bearish	Neutral	Middle Bands	Under	Upper	Upper
BBKP.JK	610	595	595	605	600	Neutral	Bearish	Neutral	Lower Bands	Under	Under	Under
BBNI.JK	7,450	7,200	7,325	7,425	7,325	Neutral	Bearish	Neutral	Lower Bands	Under	Upper	Upper
BBRI.JK	15,000	14,875	14,900	15,300	15,100	Neutral	Bearish	Neutral	Lower Bands	Under	Under	Upper
BBTN.JK	3,030	3,050	2,800	3,080	2,960	Neutral	Bullish	Overbought	Middle Bands	Upper	Upper	Upper
BDMN.JK	5,550	5,300	5,375	5,550	5,475	Neutral	Bearish	Neutral	Middle Bands	Under	Upper	Upper
BHIT.JK	104	99	97	100	99	Neutral	Bullish	Neutral	Middle Bands	Under	Under	Under
BJBR.JK	2,990	2,530	2,530	2,680	2,560	Neutral	Bullish	Neutral	Middle Bands	Under	Upper	Upper
BJTM.JK	740	695	675	725	695	Neutral	Bullish	Neutral	Middle Bands	Under	Upper	Upper
BKSL.JK	156	149	129	156	153	Neutral	Bearish	Overbought	Middle Bands	Upper	Upper	Upper
BMRI.JK	13,375	13,050	13,050	13,275	13,125	Oversold	Bullish	Neutral	Lower Bands	Under	Under	Upper
BMTR.JK	515	490	478	492	486	Neutral	Bullish	Neutral	Middle Bands	Under	Under	Under
BSDE.JK	1,850	1,820	1,810	1,850	1,840	Neutral	Bearish	Neutral	Middle Bands	Under	Upper	Upper
BTPN.JK	2,570	2,540	2,540	2,600	2,550	Oversold	Bearish	Neutral	Middle Bands	Under	Upper	Under
BWPT.JK	224	216	212	226	218	Oversold	Bullish	Neutral	Middle Bands	Under	Under	Under
CMNP.JK	1,370	1,350	1,330	1,400	1,360	Neutral	Bearish	Neutral	Middle Bands	Upper	Upper	Under
CPIN.JK	2,900	2,730	2,800	2,900	2,770	Neutral	Bearish	Neutral	Middle Bands	Under	Under	Under
CSAP.JK	500	474	456	490	474	Oversold	Bearish	Neutral	Middle Bands	Under	Upper	Under
CTRA.JK	1,235	1,170	1,175	1,235	1,170	Oversold	Bullish	Neutral	Middle Bands	Under	Upper	Under
DILD.JK	428	408	406	418	410	Neutral	Bullish	Neutral	Middle Bands	Under	Upper	Under
EXCL.JK	3,800	3,700	3,350	3,800	3,630	Neutral	Bearish	Neutral	Middle Bands	Upper	Upper	Upper
GGRM.JK	72,100	67,025	70,400	71,975	69,200	Neutral	Bearish	Neutral	Middle Bands	Under	Under	Under
GIAA.JK	342	322	330	334	328	Oversold	Bearish	Overbought	Lower Bands	Under	Under	Under
GJTL.JK	1,000	785	960	985	810	Oversold	Bullish	Overbought	Lower Bands	Under	Under	Under
HEXA.JK	4,190	4,110	4,050	4,170	4,100	Neutral	Bearish	Neutral	Middle Bands	Upper	Upper	Upper
HRUM.JK	2,500	2,240	2,290	2,430	2,330	Oversold	Bullish	Neutral	Lower Bands	Under	Upper	Under
ICBP.JK	8,875	8,675	8,525	8,850	8,700	Neutral	Bearish	Neutral	Middle Bands	Upper	Upper	Upper
IMAS.JK	1,140	895	1,020	950	900	Oversold	Bullish	Neutral	Middle Bands	Under	Under	Under
INCO.JK	3,140	3,010	2,790	3,140	2,970	Neutral	Bullish	Overbought	Middle Bands	Upper	Upper	Upper
INDF.JK	8,450	8,375	8,275	8,700	8,450	Neutral	Bearish	Neutral	Middle Bands	Under	Under	Upper
INDY.JK	930	1,295	1,115	1,345	1,310	Overbought	Bearish	Overbought	Middle Bands	Upper	Upper	Upper
INTA.JK	318	268	280	284	272	Oversold	Bearish	Neutral	Middle Bands	Under	Under	Under
INTP.JK	20,000	18,900	18,450	19,800	19,650	Neutral	Bearish	Neutral	Middle Bands	Under	Upper	Upper
ITMG.JK	20,450	19,000	18,550	20,450	19,475	Oversold	Bullish	Neutral	Middle Bands	Under	Under	Upper
JPFA.JK	1,225	1,185	1,135	1,220	1,170	Neutral	Bullish	Neutral	Middle Bands	Upper	Under	Under
JSMR.JK	5,625	5,800	5,500	5,875	5,575	Overbought	Bearish	Neutral	Upper Bands	Upper	Upper	Upper
KUAJ.JK	320	310	306	312	310	Neutral	Bullish	Neutral	Middle Bands	Under	Under	Upper
KLBF.JK	1,795	1,695	1,680	1,745	1,715	Neutral	Bearish	Neutral	Lower Bands	Under	Upper	Upper
KRAS.JK	605	550	560	585	560	Oversold	Bearish	Neutral	Lower Bands	Under	Under	Under
LPCK.JK	4,890	4,680	4,530	4,940	4,640	Neutral	Bullish	Neutral	Middle Bands	Under	Upper	Under
LPKR.JK	805	765	770	805	795	Neutral	Bearish	Neutral	Lower Bands	Under	Upper	Upper
LPFF.JK	11,025	10,150	10,475	10,800	10,175	Oversold	Bearish	Neutral	Middle Bands	Under	Under	Under
LSIP.JK	1,395	1,360	1,365	1,385	1,375	Neutral	Bearish	Neutral	Lower Bands	Under	Under	Under
MAIN.JK	965	900	920	950	935	Neutral	Bearish	Neutral	Lower Bands	Under	Under	Under
MAPI.JK	7,000	6,775	6,550	7,350	6,900	Neutral	Bearish	Neutral	Middle Bands	Upper	Upper	Upper
MASA.JK	220	204	202	208	204	Neutral	Bearish	Neutral	Middle Bands	Under	Under	Under
MNCN.JK	1,510	1,445	1,455	1,510	1,490	Neutral	Bearish	Oversold	Middle Bands	Under	Under	Under
MPPA.JK	850	605	630	695	675	Neutral	Bullish	Neutral	Middle Bands	Under	Under	Under
MTLA.JK	322	356	342	358	344	Neutral	Bullish	Neutral	Middle Bands	Under	Upper	Upper
MYOR.JK	1,995	1,990	1,875	2,000	1,995	Overbought	Bearish	Neutral	Middle Bands	Upper	Upper	Upper
PGAS.JK	2,230	1,985	2,110	2,170	2,110	Neutral	Bullish	Oversold	Lower Bands	Under	Under	Under
PTBA.JK	13,350	11,700	12,750	13,200	12,375	Oversold	Bearish	Oversold	Lower Bands	Under	Under	Under
RALS.JK	1,060	975	975	1,055	1,010	Neutral	Bearish	Neutral	Middle Bands	Under	Under	Under
ROTI.JK	1,245	1,230	1,165	1,250	1,200	Overbought	Bearish	Neutral	Upper Bands	Upper	Upper	Under
SCMA.JK	2,470	2,130	2,250	2,300	2,220	Neutral	Bearish	Neutral	Lower Bands	Under	Under	Under
SGRO.JK	2,110	2,100	1,950	2,110	2,060	Overbought	Bearish	Overbought	Middle Bands	Upper	Upper	Upper
SIMP.JK	520	498	500	510	500	Neutral	Bearish	Neutral	Lower Bands	Under	Under	Under
SMCB.JK	805	795	795	805	800	Neutral	Bearish	Neutral	Middle Bands	Under	Upper	Under
SMGR.JK	10,950	9,975	10,650	10,700	10,475	Neutral	Bullish	Neutral	Lower Bands	Under	Under	Upper
SMRA.JK	1,145	1,015	1,065	1,110	1,040	Oversold	Bearish	Neutral	Lower Bands	Under	Under	Under
SRIL.JK	358	360	344	378	362	Neutral	Bearish	Neutral	Middle Bands	Upper	Upper	Upper
SSIA.JK	680	660	640	680	665	Neutral	Bullish	Neutral	Middle Bands	Under	Under	Upper
SSMS.JK	1,575	1,500	1,510	1,535	1,515	Neutral	Bearish	Neutral	Middle Bands	Upper	Under	Under
TLKM.JK	4,820	4,680	4,730	4,770	4,710	Oversold	Bearish	Neutral	Lower Bands	Under	Upper	Upper
TOTL.JK	775	755	740	765	755	Neutral	Bullish	Neutral	Middle Bands	Under	Upper	Upper
UNTR.JK	31,000	29,700	28,750	31,000	30,425	Neutral	Bearish	Neutral	Middle Bands	Under	Upper	Upper
UNVR.JK	48,100	50,975	48,075	51,200	49,925	Overbought	Bearish	Neutral	Middle Bands	Upper	Upper	Upper

Source : Reliance Research

Legend :

- Movement: Bullish and Bearish (Indicator Stochastic)
- Momentum: Oversold, Overbought and Neutral (Indicator RSI)
- Resistance Fractal: Strong Resistance
- Support Fractal: Strong Support
- Green: Good Conditions
- Red: Poor Conditions

HEAD OFFICE

Reliance Building

Jl. Pluit Sakti Raya No. 27AB,
Pluit
Jakarta 14450
T. +62 21 661 7768
F. +62 21 661 9884

RESEARCH DIVISION

Robertus Yanuar Hardy

robertus@reliance-securities.com

Rio Adrianus

rio.adrianus@reliance-securities.com

Lanjar Nafi Taulat I

lanjar@reliance-securities.com

Aji Setiawan

aji@reliance-securities.com

Shanti Dwi Jayanti

santi@reliance-securities.com

Head of Research

Research Analyst

Technical Research Analyst

Associate Research Analyst

Associate Research Analyst

EQUITY DIVISION

Jakarta- Pluit

Jl. Pluit Sakti Raya No. 27AB,
Pluit
Jakarta 14450
T. +62 21 661 7768
F. +62 21 661 9884

Bandung

Jl.Cisangkuy No.58
Bandung 40115
T. +62 22 721 8200
F. +62 22 721 9255

Surabaya - Gubeng

Jl. Bangka No. 22
Surabaya 60281
T. +62 31 501 1128
F. +62 31 503 3196

Makassar

Jl. Boto Lempangan No. 34 J
Makassar- Sulawesi Selatan
T. +62 411 3632388
F. +62 411 3614634

Jakarta - Sudirman

Menara Batavia Ground Floor
Jl.KH.Mas Mansyur Kav 126
Jakarta 10220
T. +62 21 57905455
F. +62 21 57950728

Tasikmalaya

Ruko Tasik Indah Plaza No.21
Jl. KHZ Mustofa No. 345
Tasikmalaya 46121
T. +62 265 345000
F. +62 265 345003

Surabaya - Diponegoro

Jl. Diponegoro No.26D
Surabaya 60261
T. +62 31 567 0388
F. +62 31 561 0528

Medan

Jl. Teuku Amir Hamzah No.40-O
Medan 20117
T. +62 61 6638592
F. +62 61 6638023

Jakarta - Kebon Jeruk

Plaza Kebon Jeruk
Jl.Raya Perjuangan Blok A/2
Jakarta 11530
T. +62 21 532 4074
F. +62 21 536 2157

Malang

Jl. Guntur No. 19
Malang 65112
T. +62 341 347 611
F. +62 341 347 615

Bali - Denpasar

Dewata Square Blok A3
Jl. Letda Tantular Renon
Denpasar 802361
T. +62 361 225099
F. +62 361 245099

Tangerang

Jl. Pahlawan Seribu Ruko BSD
Sektor 7 Blok RK kav. 9
Tangerang 15310
T. +62 21 5387495
F. +62 21 5387494

Pekanbaru

Jl. Jendral Sudirman No.73
Pekanbaru-Riau
T. +62 761 848414
F. +62 761 849456

Pontianak

Jl. MT Haryono No. 6
Pontianak 78121
T. +62 561 575674
F. +62 561 575670

Solo

Jl. Slamet Riyadi 330^a
Solo 57145
T. +62 271 736599
F. +62 271 733478

Balikpapan

Ruko Bukit Damai Indah
Blok I, No. 3, Rt.34
Jl. MT. Haryono, Gunung
Bahagia, Balikpapan Selatan
76114
T. +62 542 746313
F. +62 542 746317

IDX CORNER & INVESTMENT GALLERY

STIE Malangkeucwara

Jl. Terusan Candi Kalasan
Malang 65142
T. +62 341 491813
F. +62 341 495619

Universitas Muhammadiyah Gresik

Jl. Sumatra 101 GKB
Gresik 61121
T. +62 31 3951414
F. +62 31 3952585

Universitas Surabaya

Jl. Raya Kalirungkut
Surabaya 60293
T. +62 31 2981203
F. +62 31 2981204

Universitas Muhammadiyah Malang

Jl. Raya Tlogomas 246
Malang 65144
T. +62 341 464318-9
F. +62 341 460782

Universitas Siliwangi Tasikmalaya

Jl. Siliwangi No. 24
Tasikmalaya 46151
T. +62 265 323685
F. +62 265 323534

Politeknik Kediri

Jl. Mayor Bismo No. 27
Kediri 64121
T +62 354 683128
F +62 354 683128

Universitas Negeri Malang

Jl. Surabaya No. 6
Malang 65145
T. +62 341 585914
F. +62 341 55288

Universitas Negeri Makassar

FakultasEkonomiGedung BT Lt. 2
Jl. A. P. Pettarani, Kampus UNM, Gunungsari
Baru
Makassar 90222
T. +62 411 889464, 881244
F. +62 411 887604

Universitas Muhammadiyah Pontianak

Jl. Ahmad Yani, No. 111
Pontianak 78124
T. +62 561 743465
F. +62 561 766840

STIE AAS

Jalan Slamet Riyadi No 361
Kartasura, Surakarta
T. +62 271 726156
F. +62 271 726156

Universitas Tanjungpura Pontianak

Jl. Jendral Ahmad Yani
Pontianak 78124
T. +62 561 743465
F. +62 561 766840

STIE "AUB" Surakarta

Jl. Mr. Sartono 97, Cengklik
Nusukan, Surakarta 57135
T. +62 271 854803
F. +62 271 853084

STIESIA Surabaya

Jl. MenurPumpungan 30
Surabaya
T. +62 31 5947505
F. +62 31 5932218

Universitas Muhammadiyah Sidoarjo

Jl. Majapahit 666 B
Sidoarjo, JawaTimur
T. +62 31 8945444
F. +62 31 8949333

Universitas Pesantren Tinggi Darul Ulum

Kompleks Pp Darul Ulu, Peterongan
Jombang, JawaTimur 60281
T. +62 321 873655
F. +62 321 875771

STIE Tri Bhakti

Jl. Teuku Umar No.24
Cut Meutia Setiakawan, Bekasi
T. +62 21 8242 9400, 8242 9500
F. +62 271 726156

STIKOM BALI

Jl. Raya Puputan No. 86, Renon, Denpasar
Timur, kota Denpasar
Bali-80234
T. +62 361 244445

Universitas 17 Agustus 1945 Banyuwangi

Jl. AdiSucipto 26
Banyuwangi, JawaTimur
T. +62 333 419163
F. +62 333 419163

IAIN Antasari

Jl. Ahmad Yani Km. 4,5 Banjarmasin
T. +62 511 3267583

Universitas Islam Kalimantan

Jl. Adiyaksa No.2, Kayu Tangi, Banjarmasin
T. +62 511 3303871
F. +62 511 3303871

Disclaimer:

Information, opinions and recommendations contained in this document are presented by PT Reliance Sekuritas Indonesia Tbk. from sources that are considered reliable and dependable. This document is not an offer, invitation or any kind of representations to decide to buy or sell stock. Investment decisions taken based on this document is not the responsibility of PT Reliance Sekuritas Indonesia Tbk. PT Reliance Sekuritas Indonesia Tbk. reserves the right to change the contents of this document at any time without prior notice.