

Market View

IHSG (+0.14%) menutup pekan dengan penguatan +8.43 poin dilevel 6039.54 setelah berhasil rebound diakhir sesi kedua. Bangkitnya saham-saham sektor konsumen (+1.7%) setelah mengalami kerugian pada perdagangan sebelumnya menjadi triger positif pergerakan IHSG diakhir pekan. Saham KINO, ULTI, ICBP, GGRM dan HMSP menjadi pendorong. Sedangkan sektor trading (-1.51%) dan keuangan menjadi penekan IHSG seiring pelemahan saham RIMO, KIOS dan MTWI dan BBCA. Investor asing tercatat net sell 592.99 Miliar rupiah.

Leader:

HMSP (+2.3%), UNVR (+1.6%), TLKM (+1.5%), GGRM (+2.3%), INTP (+3.6%)

Net Sell:

BBCA (-2.1%), RIMO (-24.9%), ASII (-0.6%), KPIG (-16.3%), BBNI (-1.0%)

Secara teknikal IHSG berhasil whipsaw support MA5 dengan ditutup terkonsolidasi menguat dengan candlestick bearish. Posisi yang telah mencapai target resistance regresi membuat pergerakan cenderung menekan disesi perdagangan selanjutnya. Jenuhnya pergerakan Stochastic dan RSI memberi indikasi profit taking jangka pendek dengan range pergerakan 6017-6060.

Membuka pekan indeks saham di Asia mixed. Dimana Nikkei (+0.21%) dan TOPIX (+0.11%) dibuka menguat setelah Yen diperdagangkan di dekat level terendah satu minggu sedangkan KOSPI (-0.44%) tertekan cukup dalam diawal sesi. Investor menilai dampak dari tindakan anti-korupsi di Arab Saudi yang telah menjerat pejabat tinggi termasuk pengeran Alweeled bin Talal sebagai investor di perusahaan Citigroup Inc dan Apple. Harga minyak WTI (+0.32%) melanjutkan trend positif hingga \$55.82 per barrel seiring penguatan Batubara NC (+0.20%) dan Timah (+1.26%) sedangkan Harga Nikkel (-1.41%) kembali terkoreksi setelah dinilai overbought pada pergerakan sebelumnya.

IHSG Technical Review



Analyst:
Lanjar Nafi
lanjar@reliancesekuritas.com
 +62 21 5793 0008 ext. 604

your **reliable** partner | 1

ACES



TRADING BUY

Analisis:

- Harga saham tertekan signifikan dan mencapai level *support* MA50. Indikasi *rebound* jangka pendek pada level *support*.
 - Batasan *stop-loss* jika harga saham terkonfirmasi *break out* MA50.
 - Indikator *Stochastic* bergerak tertekan mendekati level *oversold* dengan indikator RSI yang *bearish*.
- | | |
|----------------|-------------|
| • Support | : 1150-1200 |
| • Resistance | : 1250-1300 |
| • Stop-loss | : 1190 |
| • Target Price | : 1300 |

BMRI

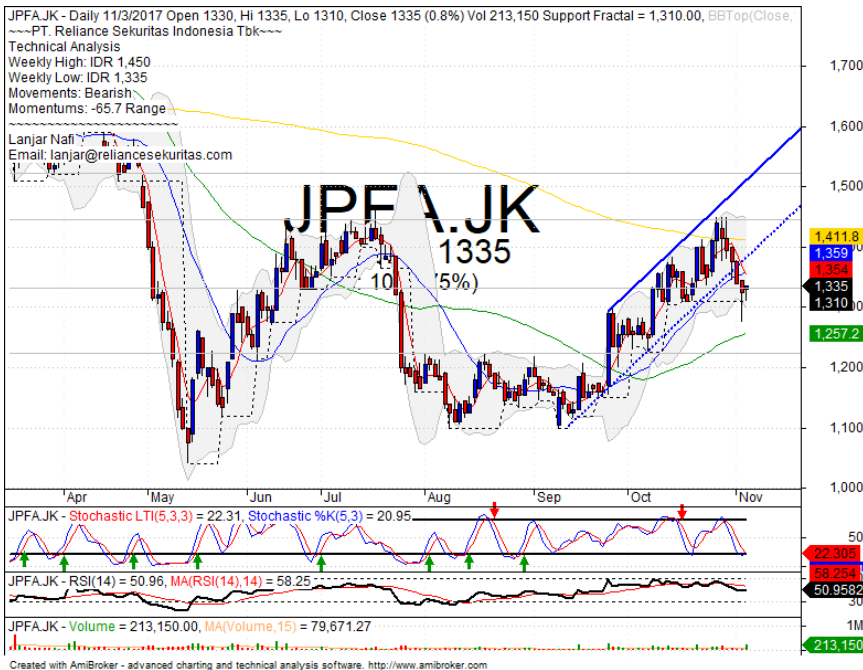


SELL

Analisis:

- *Candlestick* membentuk pola *bearish counter attack* Indikasi terkoreksi jangka pendek mennguji *support* MA5 dan MA20.
 - Batasan *stop-loss* jika harga terkonfirmasi *breakout support*.
 - Indikator *stochastic* menguat cukup signifikan namun dengan *momentum* RSI yang cukup tinggi pada level *overbought*.
- | | |
|--------------|-------------|
| • Support | : 6950-7150 |
| • Resistance | : 7350-7600 |
| • Stop-loss | : 7125 |
| • Downside | : 6950 |

JPFA



TRADING BUY

Analisis:

- Candlestick membentuk pola *bullish harami* setelah mencoba menyentuh level MA50. Indikasi teknikal rebound jangka pendek.
- Batasan *stop-loss* jika harga *breakout support*.
- Indikator *stochastic* mulai memasuki *level oversold* dengan potensi membentuk pola *golden-cross*.

- Support : 1225-1335
- Resistance : 1450-1520
- Stop-loss : 1290
- Target Price : 1410-1450

KLBF



BUY

Analisis:

- Candlestick membentuk pola *Above the stomach* Indikasi menguat rebound pada level MA200 support.
- Batasan *stop-loss* jika harga saham *break out MA200 support*.
- Indikator *stochastic* berpola *golden-cross* seiring terbentuknya *bullish reversal* momentum pada indikator *RSI*.

- Support : 1535-1580
- Resistance : 1620-1660
- Stop-loss : 1590
- Target Price : 1640-1670

Stocks	S2	S1	Closing Price	R1	R2	Technical Notes	Rec	Stop Loss	Rec Buy Prc	Target Price
Plantation										
AALI	14,100	14,400	14,550	14,800	15,000	Consolidations	W	14,200		
LSIP	1,490	1,525	1,540	1,560	1,580	Overbought	PS	1,520		
Mining										
INCO	2,850	3,000	3,080	3,140	3,250	Overbought	PS	3,020		
Consumer										
UNVR	48,000	49,000	49,875	50,000	51,000	Rebounded at support	TB	48,800		50,000
INDF	7,925	8,100	8,225	8,325	8,500	Stoch golden-cross	TB	8,100		8,325
KLBF	1,540	1,580	1,610	1,620	1,660	Rebounded at MA200	TB	1,570		1,660
Trading										
ACES	1,140	1,200	1,205	1,250	1,350	Arrived at MA50	TB	1,180		1,260
AKRA	6,950	7,250	7,575	7,575	7,700	Rebounded at MA20	SB	7,200	7,550	7,700
UNTR	33,500	35,000	35,300	36,500	38,000	Pulled back resistance	S	35,200		
Property & Construction										
LPCK	3,640	3,760	3,880	3,900	4,070	Stoch golden-cross	TB	3,750		4,000
WIKA	1,785	1,900	1,960	1,985	2,080	Trying rebound	TB	1,920		1,985
BSDE	1,710	1,750	1,770	1,790	1,845	Bullish momentum	B	1,740	1,770	1,805
WSKT	2,000	2,100	2,150	2,180	2,270	Teknikal rebound	TB	2,050		2,200
ADHI	2,180	2,230	2,260	2,300	2,360	Consolidations	PS	2,220		
Basic Industry & Chemical										
SMGR	9,900	10,300	10,375	10,700	11,075	Southern star	TB	10,200		10,700
CPIN	3,070	3,140	3,270	3,300	3,400	Bearish momentum	S	3,250		
MAIN	850	860	880	960	1,020	Bearish momentum	W	855		
INTP	21,900	22,650	23,300	23,500	24,650	Overbought	PS	23,200		
Miscellaneous										
SRIL	358	368	388	390	410	Consolidations	PS	380		
ASII	7,700	7,850	8,100	8,325	8,325	Consolidations	H	7,900		8,300
Finance										
BBTN	2,720	2,840	2,880	2,960	3,090	Bullish consolidations	B	2,800	2,870	2,960
BMRI	6,925	7,100	7,250	7,300	7,525	Bearish counter attack	PS	6,900		
BTPN	2,400	2,450	2,480	2,540	2,600	Bearish momentum	PS	2,440		
BJBR	2,150	2,350	2,420	2,480	2,690	Oversold	W	2,400		
BBRI	15,500	15,850	16,000	16,250	16,600	Consolidations	H	15,800		16,250
Infrastructure										
TLKM	3,870	3,950	4,090	4,050	4,180	Oversold	W	3,900		
PGAS	1,580	1,690	1,780	1,865	2,000	Pulled back resistance	S	1,820		

Source : Reliance Sekuritas Indonesia

Analyst Conclusions:

Break out the all time high level, The index probably minor corrections.

Legend :

- B: BUY (allocate till 100% of the weighted capital to accumulate, higher than 50% upside probability)
- SB: SPECULATIVE BUY (allocate 25%-50% of the weighted capital to accumulate, 25%-50% upside probability)
- W: WAIT (wait for proper entry level, do the stop-loss if necessary)
- H: HOLD (hold the portfolio position, aim for the best price to distribute)
- PS: PARTIAL SELL (distribute 25%-50% part of the portfolio, 25%-50% downside probability)
- S: SELL (distribute till 100% of the portfolio, higher than 50% downside probability)
- TB: TRADING BUY (short term or intraday trading within a tight trading range. Highly speculative).

Ticker	Resistance	Price	Support	Weekly	Weekly	Indicator			Moving Average			
	Fractal	11/3/2017	Fractal	High	Low	Stochastic	RSI	B. Band	20 Days	50 Days	200 Days	
AALI.JK	15,175	14,550	14,550	14,825	14,600	Oversold	Bearish	Neutral	Middle Bands	Under	Under	Under
ACES.JK	1,280	1,205	1,205	1,425	1,265	Neutral	Bearish	Neutral	Middle Bands	Under	Upper	Upper
ADHI.JK	2,280	2,260	2,170	2,290	2,220	Neutral	Bullish	Neutral	Middle Bands	Upper	Upper	Upper
ADRO.JK	1,910	1,895	1,825	1,925	1,875	Neutral	Bullish	Neutral	Middle Bands	Upper	Upper	Upper
AISA.JK	1,030	930	975	990	960	Oversold	Bullish	Neutral	Lower Bands	Under	Under	Under
AKRA.JK	7,350	7,575	7,225	7,900	7,500	Neutral	Bullish	Neutral	Middle Bands	Upper	Upper	Upper
ANTM.JK	670	670	640	720	655	Neutral	Bullish	Neutral	Middle Bands	Upper	Under	Under
APLN.JK	300	252	248	280	258	Oversold	Bearish	Neutral	Middle Bands	Under	Under	Upper
ASII.JK	8,525	8,100	7,900	8,175	8,025	Neutral	Bullish	Neutral	Middle Bands	Upper	Upper	Under
ASRI.JK	414	404	388	414	398	Neutral	Bearish	Neutral	Middle Bands	Upper	Upper	Upper
BBCA.JK	21,375	21,025	20,200	21,625	20,475	Neutral	Bullish	Neutral	Middle Bands	Upper	Upper	Upper
BBKP.JK	570	550	550	565	555	Neutral	Bearish	Neutral	Middle Bands	Under	Under	Under
BBNI.JK	7,650	7,750	7,575	8,000	7,700	Neutral	Bullish	Neutral	Middle Bands	Upper	Upper	Upper
BBRI.JK	15,750	16,000	15,525	16,050	15,700	Neutral	Bullish	Overbought	Upper Bands	Upper	Upper	Upper
BBTN.JK	3,140	2,880	2,690	2,890	2,820	Neutral	Bullish	Neutral	Middle Bands	Under	Under	Upper
BDMM.JK	5,275	5,025	5,025	5,275	5,100	Neutral	Bearish	Neutral	Middle Bands	Under	Under	Upper
BHIT.JK	103	98	97	100	98	Oversold	Bullish	Neutral	Middle Bands	Under	Under	Under
BJBR.JK	2,730	2,420	2,380	2,500	2,450	Oversold	Bearish	Neutral	Middle Bands	Under	Under	Upper
BJTM.JK	720	695	665	705	700	Neutral	Bearish	Neutral	Middle Bands	Upper	Upper	Upper
BKSL.JK	148	138	125	148	141	Neutral	Bearish	Neutral	Middle Bands	Under	Under	Upper
BMRI.JK	7,125	7,250	6,950	7,425	7,100	Neutral	Bullish	Neutral	Upper Bands	Upper	Upper	Upper
BMTR.JK	650	600	580	625	600	Neutral	Bullish	Neutral	Middle Bands	Upper	Upper	Upper
BSDI.JK	1,800	1,770	1,705	1,770	1,735	Neutral	Bullish	Neutral	Middle Bands	Upper	Under	Under
BTPN.JK	2,560	2,480	2,550	2,560	2,520	Oversold	Bearish	Neutral	Lower Bands	Under	Under	Under
BWPT.JK	262	244	244	252	246	Oversold	Bearish	Neutral	Middle Bands	Under	Under	Under
CMNP.JK	1,430	1,410	1,340	1,430	1,370	Neutral	Bullish	Neutral	Upper Bands	Upper	Upper	Under
CPIN.JK	3,550	3,270	3,200	3,400	3,300	Neutral	Bearish	Neutral	Middle Bands	Upper	Upper	Upper
CSAP.JK	470	464	430	470	464	Overbought	Bearish	Neutral	Middle Bands	Upper	Under	Under
CTRA.JK	1,245	1,220	1,175	1,230	1,205	Neutral	Bullish	Neutral	Middle Bands	Upper	Upper	Upper
DILD.JK	410	382	378	400	386	Neutral	Bullish	Overbought	Lower Bands	Under	Under	Under
EXCL.JK	3,530	3,560	3,300	3,600	3,390	Neutral	Bullish	Neutral	Middle Bands	Upper	Under	Upper
GGRM.JK	67,900	73,600	61,925	73,925	68,050	Overbought	Bullish	Overbought	Upper Bands	Upper	Upper	Upper
GIAA.JK	380	360	320	380	362	Neutral	Bearish	Neutral	Middle Bands	Upper	Upper	Upper
GJTL.JK	735	680	680	725	690	Oversold	Bearish	Neutral	Middle Bands	Under	Under	Under
HEXA.JK	3,710	3,590	3,450	3,660	3,540	Neutral	Bullish	Neutral	Middle Bands	Under	Under	Under
HRUM.JK	2,410	2,300	2,340	2,410	2,330	Oversold	Bearish	Neutral	Middle Bands	Under	Upper	Upper
ICBP.JK	9,000	8,850	8,650	9,000	8,850	Neutral	Bullish	Neutral	Middle Bands	Upper	Upper	Upper
IMAS.JK	1,065	985	920	1,050	985	Neutral	Bearish	Neutral	Middle Bands	Upper	Upper	Under
INCO.JK	3,120	3,080	2,780	3,120	2,930	Neutral	Bullish	Neutral	Middle Bands	Upper	Upper	Upper
INDF.JK	8,500	8,225	8,150	8,325	8,250	Oversold	Bullish	Neutral	Middle Bands	Under	Under	Under
INDY.JK	2,390	2,370	2,210	2,440	2,340	Neutral	Bullish	Neutral	Middle Bands	Upper	Upper	Upper
INTA.JK	302	400	320	402	394	Overbought	Bearish	Overbought	Middle Bands	Upper	Upper	Upper
INTP.JK	23,500	23,300	19,050	23,500	21,600	Neutral	Bullish	Overbought	Middle Bands	Upper	Upper	Upper
ITMG.JK	23,175	22,500	21,200	22,950	22,525	Neutral	Bullish	Neutral	Middle Bands	Upper	Upper	Upper
JPFA.JK	1,385	1,335	1,310	1,450	1,335	Neutral	Bearish	Neutral	Middle Bands	Under	Upper	Under
JSMR.JK	6,600	6,525	6,250	6,550	6,475	Neutral	Bearish	Neutral	Middle Bands	Upper	Upper	Upper
KIJA.JK	312	306	298	308	304	Neutral	Bullish	Neutral	Middle Bands	Under	Under	Under
KLBF.JK	1,650	1,610	1,585	1,650	1,605	Oversold	Bullish	Neutral	Middle Bands	Under	Under	Upper
KRAS.JK	510	496	492	510	500	Neutral	Bullish	Neutral	Middle Bands	Under	Under	Under
LPCK.JK	4,300	3,880	3,780	4,070	3,840	Oversold	Bullish	Neutral	Middle Bands	Upper	Under	Under
LPKR.JK	730	645	695	700	655	Neutral	Bearish	Overbought	Lower Bands	Under	Under	Under
LPPF.JK	9,900	10,200	8,475	10,425	8,875	Neutral	Bullish	Neutral	Middle Bands	Upper	Upper	Under
LSIP.JK	1,540	1,540	1,415	1,540	1,510	Neutral	Bullish	Overbought	Middle Bands	Upper	Upper	Upper
MAIN.JK	965	880	855	910	880	Neutral	Bullish	Neutral	Middle Bands	Under	Under	Under
MAPI.JK	6,625	6,650	6,300	6,975	6,550	Neutral	Bearish	Neutral	Middle Bands	Upper	Under	Upper
MASA.JK	274	230	216	234	226	Neutral	Bullish	Neutral	Middle Bands	Under	Upper	Upper
MNCN.JK	1,595	1,505	1,480	1,585	1,545	Neutral	Bearish	Neutral	Middle Bands	Under	Upper	Under
MPPA.JK	615	600	570	615	590	Neutral	Bullish	Neutral	Middle Bands	Under	Under	Under
MTLA.JK	370	356	350	372	356	Overbought	Bearish	Neutral	Middle Bands	Upper	Upper	Upper
MYOR.JK	2,160	2,110	2,050	2,250	2,150	Neutral	Bullish	Neutral	Middle Bands	Under	Upper	Upper
PGAS.JK	1,900	1,780	1,630	1,900	1,835	Neutral	Bearish	Neutral	Middle Bands	Upper	Upper	Under
PTBA.JK	11,300	11,550	10,450	11,750	11,425	Overbought	Bearish	Neutral	Middle Bands	Upper	Upper	Under
RALS.JK	925	895	865	925	900	Neutral	Bearish	Neutral	Middle Bands	Under	Under	Under
ROTI.JK	1,370	1,295	1,240	1,320	1,270	Neutral	Bullish	Neutral	Middle Bands	Upper	Upper	Under
SCMA.JK	2,320	1,950	2,120	2,200	2,030	Neutral	Bearish	Neutral	Lower Bands	Under	Under	Under
SGRO.JK	2,110	2,520	2,300	2,520	2,500	Overbought	Bullish	Overbought	Middle Bands	Upper	Upper	Upper
SIMP.JK	580	525	515	540	525	Oversold	Bullish	Neutral	Middle Bands	Under	Upper	Under
SMCB.JK	850	820	800	850	815	Neutral	Bearish	Neutral	Middle Bands	Upper	Upper	Under
SMGR.JK	11,050	10,375	10,400	11,050	10,425	Neutral	Bearish	Neutral	Middle Bands	Under	Under	Upper
SMRA.JK	1,045	1,015	1,005	1,045	1,025	Neutral	Bearish	Neutral	Middle Bands	Under	Under	Under
SRIL.JK	414	388	362	396	370	Neutral	Bullish	Neutral	Middle Bands	Under	Upper	Upper
SSIA.JK	610	580	585	610	585	Oversold	Bearish	Neutral	Middle Bands	Under	Under	Under
SSMS.JK	1,550	1,500	1,480	1,515	1,495	Neutral	Bullish	Neutral	Middle Bands	Upper	Upper	Under
TLKM.JK	4,320	4,090	3,910	4,180	4,080	Neutral	Bullish	Neutral	Middle Bands	Under	Under	Under
TOTL.JK	715	720	650	745	710	Neutral	Bearish	Neutral	Middle Bands	Upper	Under	Under
UNTR.JK	35,800	35,300	32,050	37,250	34,100	Neutral	Bearish	Neutral	Middle Bands	Upper	Upper	Upper
UNVR.JK	49,950	49,875	48,900	49,950	49,600	Neutral	Bullish	Neutral	Upper Bands	Upper	Under	Upper

Source : Reliance Research

Legend :

- Movement: Bullish and Bearish (Indicator Stochastic)
- Momentum: Oversold, Overbought and Neutral (Indicator RSI)
- Resistance Fractal: Strong Resistance
- Support Fractal: Strong Support
- Green: Good Conditions
- Red: Poor Conditions

HEAD OFFICE

Reliance Building

Jl. Pluit Sakti Raya No. 27AB,
Pluit
Jakarta 14450
T. +62 21 661 7768
F. +62 21 661 9884

RESEARCH DIVISION

Lanjar Nafi Taulat I

lanjar@reliancesekuritas.com

Aji Setiawan

aji@reliancesekuritas.com

Shanti Dwi Jayanti

santi@reliancesekuritas.com

Technical Research Analyst

Associate Research Analyst

Associate Research Analyst

EQUITY DIVISION

Jakarta- Pluit

Jl. Pluit Sakti Raya No. 27AB,
Pluit
Jakarta 14450
T. +62 21 661 7768
F. +62 21 661 9884

Bandung

Jl.Cisangkuy No.58
Bandung 40115
T. +62 22 721 8200
F. +62 22 721 9255

Surabaya - Gubeng

Jl. Bangka No. 22
Surabaya 60281
T. +62 31 501 1128
F. +62 31 503 3196

Makassar

Jl. Boto Lempangan No. 34 J
Makassar- Sulawesi Selatan
T. +62 411 3632388
F. +62 411 3614634

Jakarta - Sudirman

Menara Batavia Ground Floor
Jl.KH.Mas Mansyur Kav 126
Jakarta 10220
T. +62 21 57905455
F. +62 21 57950728

Tasikmalaya

Ruko Tasik Indah Plaza No.21
Jl. KHZ Mustofa No. 345
Tasikmalaya 46121
T. +62 265 345000
F. +62 265 345003

Surabaya - Diponegoro

Jl. Diponegoro No.26D
Surabaya 60261
T. +62 31 567 0388
F. +62 31 561 0528

Medan

Jl. Teuku Amir Hamzah No.40-O
Medan 20117
T. +62 61 6638592
F. +62 61 6638023

Jakarta - Kebon Jeruk

Plaza Kebon Jeruk
Jl.Raya Perjuangan Blok A/2
Jakarta 11530
T. +62 21 532 4074
F. +62 21 536 2157

Malang

Jl. Guntur No. 19
Malang 65112
T. +62 341 347 611
F. +62 341 347 615

Bali - Denpasar

Dewata Square Blok A3
Jl. Letda Tantular Renon
Denpasar 802361
T. +62 361 225099
F. +62 361 245099

Tangerang

Jl. Pahlawan Seribu Ruko BSD
Sektor 7 Blok RK kav. 9
Tangerang 15310
T. +62 21 5387495
F. +62 21 5387494

Pekanbaru

Jl. Jendral Sudirman No.73
Pekanbaru-Riau
T. +62 761 848414
F. +62 761 849456

Pontianak

Jl. MT Haryono No. 6
Pontianak 78121
T. +62 561 575674
F. +62 561 575670

Solo

Jl. Slamet Riyadi 330^a
Solo 57145
T. +62 271 736599
F. +62 271 733478

Balikpapan

Ruko Bukit Damai Indah
Blok I, No. 3, Rt.34
Jl. MT. Haryono, Gunung
Bahagia, Balikpapan Selatan
76114
T. +62 542 746313
F. +62 542 746317

IDX CORNER & INVESTMENT GALLERY

STIE Malangkeucwara

Jl. Terusan Candi Kalasan
Malang 65142
T. +62 341 491813
F. +62 341 495619

Universitas Muhammadiyah Gresik

Jl. Sumatra 101 GKB
Gresik 61121
T. +62 31 3951414
F. +62 31 3952585

Universitas Surabaya

Jl. Raya Kalirungkut
Surabaya 60293
T. +62 31 2981203
F. +62 31 2981204

Universitas Muhammadiyah Malang

Jl. Raya Tlogomas 246
Malang 65144
T. +62 341 464318-9
F. +62 341 460782

Universitas Siliwangi Tasikmalaya

Jl. Siliwangi No. 24
Tasikmalaya 46151
T. +62 265 323685
F. +62 265 323534

Politeknik Kediri

Jl. Mayor Bismo No. 27
Kediri 64121
T +62 354 683128
F +62 354 683128

Universitas Negeri Malang

Jl. Surabaya No. 6
Malang 65145
T. +62 341 585914
F. +62 341 55288

Universitas Negeri Makassar

FakultasEkonomiGedung BT Lt. 2
Jl. A. P. Pettarani, Kampus UNM, Gunungsari
Baru
Makassar 90222
T. +62 411 889464, 881244
F. +62 411 887604

Universitas Muhammadiyah Pontianak

Jl. Ahmad Yani, No. 111
Pontianak 78124
T. +62 561 743465
F. +62 561 766840

STIE AAS

Jalan Slamet Riyadi No 361
Kartasura, Surakarta
T. +62 271 726156
F. +62 271 726156

Universitas Tanjungpura Pontianak

Jl. Jendral Ahmad Yani
Pontianak 78124
T. +62 561 743465
F. +62 561 766840

STIE "AUB" Surakarta

Jl. Mr. Sartono 97, Cengklik
Nusukan, Surakarta 57135
T. +62 271 854803
F. +62 271 853084

STIESIA Surabaya

Jl. MenurPumpungan 30
Surabaya
T. +62 31 5947505
F. +62 31 5932218

Universitas Muhammadiyah Sidoarjo

Jl. Majapahit 666 B
Sidoarjo, JawaTimur
T. +62 31 8945444
F. +62 31 8949333

Universitas Pesantren Tinggi Darul Ulum

Kompleks Pp Darul Ulu, Peterongan
Jombang, JawaTimur 60281
T. +62 321 873655
F. +62 321 875771

STIE Tri Bhakti

Jl. Teuku Umar No.24
Cut Meutia Setiakawan, Bekasi
T. +62 21 8242 9400, 8242 9500
F. +62 271 726156

STIKOM BALI

Jl. Raya Puputan No. 86, Renon, Denpasar
Timur, kota Denpasar
Bali-80234
T. +62 361 244445

Universitas 17 Agustus 1945 Banyuwangi

Jl. AdiSucipto 26
Banyuwangi, JawaTimur
T. +62 333 419163
F. +62 333 419163

IAIN Antasari

Jl. Ahmad Yani Km. 4,5 Banjarmasin
T. +62 511 3267583

Universitas Islam Kalimantan

Jl. Adiyaksa No.2, Kayu Tangi, Banjarmasin
T. +62 511 3303871
F. +62 511 3303871

Disclaimer:

Information, opinions and recommendations contained in this document are presented by PT Reliance Sekuritas Indonesia Tbk. from sources that are considered reliable and dependable. This document is not an offer, invitation or any kind of representations to decide to buy or sell stock. Investment decisions taken based on this document is not the responsibility of PT Reliance Sekuritas Indonesia Tbk. PT Reliance Sekuritas Indonesia Tbk. reserves the right to change the contents of this document at any time without prior notice.