

Market View

IHSG (+0.19%) menguat +11.28 poin dilevel 6050.82 seiring optimisme investor pada pertumbuhan ekonomi dan Indeks kepercayaan bisnis di Indonesia. GDP rilis sedikit lebih rendah dari ekspektasi dilevel 5.06% dari 5.01% diperiode sebelumnya dengan ekspektasi awal 5.1% sedangkan Indeks kepercayaan bisnis dalam negeri meningkat berkontraksi dengan ekpektasi 112.39 dari 111.63 diperiode sebelumnya. Indeks ektor infrastruktur (+1.39%) dan Industri Dasar (+1.11%) menjadi pendorong dengan menguat IHSG dengan reboundnya mayoritas saham konstruksi. Sedangkan indeks sektor konsumen (-0.80%) mengalami aksi profit taking setelah menguat signifikan diakhir pekan. Investor asing tercatat net sell 157.66 Miliar rupiah dengan saham UNVR, ASII, BBNi dan UNTR yang memimpin penjualan.

Leader:

HMSP (+2.3%), UNVR (+1.6%), TLKM (+1.5%), GGRM (+2.3%), INTP (+3.6%)

Net Sell:

BCA (-2.1%), RIMO (-24.9%), ASII (-0.6%), KPIG (-16.3%), BBNi (-1.0%)

Pergerakan IHSG secara teknikal terkonsolidasi positif pada zona overbought siring pergerakan yang mulai menjenuh terlihat dari Indikator stochastic dan RSI. Pulled back upper bollinger bands dan pengujian pada level support MA5 dan MA20 terus membayangi hingga menjadi kekhawatiran investor saat ini. Diperkirakan IHSG akan bergerak mixed pada range pergerakan 6033-6075. Saham-saham yang masih dapat diperhatikan diantaranya ACES, JPFA, KLBf, ERAA, SCMA..

Tindakan keras pada aksi korupsi di Arab Saudi mampu membuat harga minyak WTI (-0.21%) melambung pada perdagangan sebelumnya kelevel tertinggi lebih dari dua tahun dilevel 57.21 perbarrel. Indeks Nikkei (+0.09%), TOPIX (+0.08%) dan KOSPI (+0.17%) mengawali bursa saham di Asia dengan terkonsolidasi. Harga Nikel (+1.72%) rebound sedangkan harga batubara NC (-0.25%) dan Timah (-0.56%) dibuka terkoreksi.

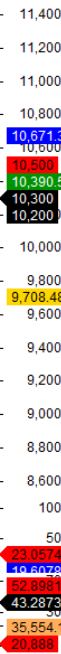
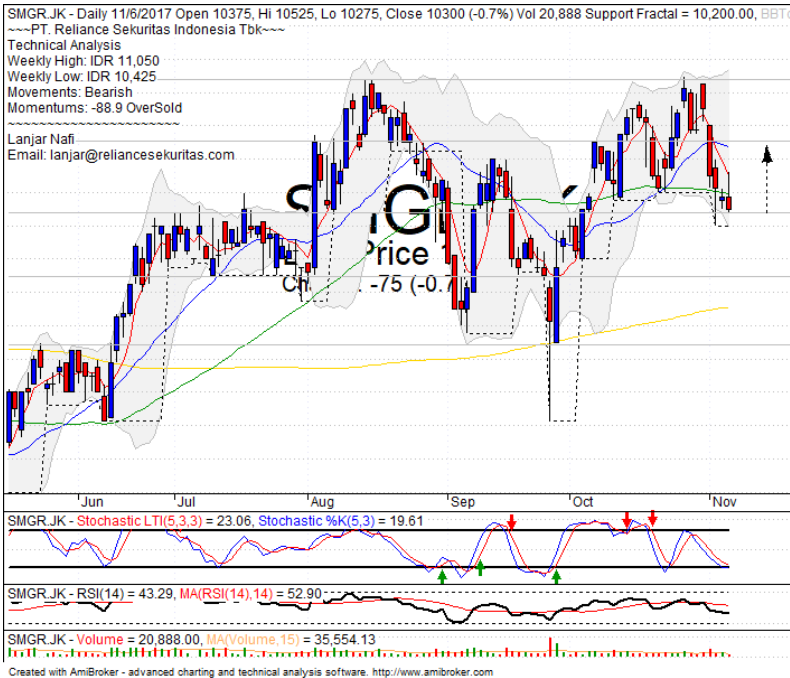
IHSG Technical Review



Analyst:
 Lanjar Nafi
lanjar@reliancesekuritas.com
 +62 21 5793 0008 ext. 604

your **reliable** partner | 1

SMGR

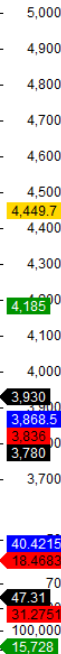


TRADING BUY

Analisis:

- Harga saham sedang melakukan pengujian MA50 sebagai *support*. Berindikasi whipsaw.
 - Batasan *stop-loss* jika harga saham terkonfirmasi *break out* MA50.
 - Indikator *Stochastic* bergerak mencoba membentuk pola *golden-cross* pada *level* osilator jenuh jual.
- | | |
|-----------------------|---------------|
| • Support | : 9875-10275 |
| • Resistance | : 10700-11075 |
| • Stop-loss | : 10200 |
| • Target Price | : 10700 |

LPCK

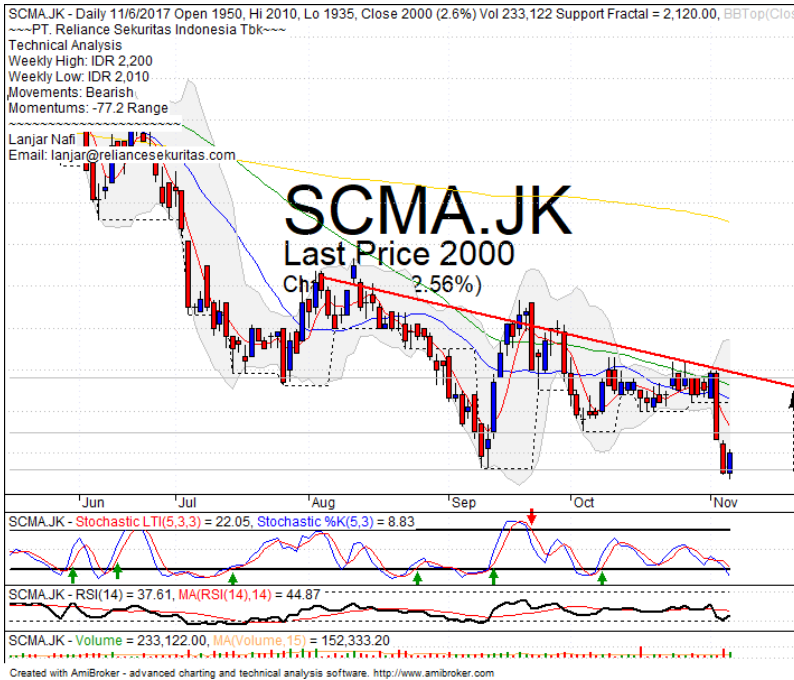


BUY

Analisis:

- *Candlestick* mengkonfirmasi pola *bullish separating line* dengan *break out resistance level*. Indikasi melanjutkan penguatan menguji *resistance* selanjutnya.
 - Batasan *stop-loss* jika harga terkonfirmasi *breakout support*.
 - Indikator *stochastic* menguat setelah membentuk pola *golden-cross* yang cukup optimis dengan *momentum RSI bullish*.
- | | |
|-----------------------|-------------|
| • Support | : 3760-3900 |
| • Resistance | : 4080-4260 |
| • Stop-loss | : 3860 |
| • Target Price | : 4080 |

SCMA



TRADING BUY

Analisis:

- Candlestick membentuk pola *bullish harami* setelah melakukan pengujian *level support*. Indikasi menguat menuju *bearish trend line*.
- Batasan *stop-loss* jika harga *breakout support*.
- Indikator *stochastic* mulai memasuki *level oversold* dengan potensi membentuk pola *golden-cross*.

- Support : 1855-1960
- Resistance : 2050-2180
- Stop-loss : 1925
- Target Price : 2130

KBLI



TRADING BUY

Analisis:

- Candlestick membentuk pola *bullish kicker signal* dengan indikasi *rebound* pada *level support bullish trend* dan MA50.
- Batasan *stop-loss* jika harga saham *break out MA50 support*.
- Indikator *stochastic* berpola *golden-cross* pada level *oversold*.

- Support : 402-426
- Resistance : 452-474
- Stop-loss : 420
- Target Price : 476-494

Stocks	S2	S1	Closing Price	R1	R2	Technical Notes	Rec	Stop Loss	Rec Buy Prc	Target Price
Plantation										
AALI	14,100	14,400	14,675	14,800	15,000	Consolidations	TB	14,200		14,800
LSIP	1,490	1,525	1,560	1,560	1,580	Overbought	PS	1,550		
Mining										
INCO	3,000	3,140	3,170	3,250	3,380	Overbought	PS	3,120		
Consumer										
UNVR	48,000	49,000	49,175	50,000	51,000	Consolidations	TB	48,800		50,000
INDF	7,925	8,100	8,200	8,325	8,500	Stoch golden-cross	TB	8,100		8,325
KLBF	1,540	1,580	1,610	1,620	1,660	Rebounded at MA200	TB	1,570		1,660
Trading										
ACES	1,090	1,140	1,190	1,200	1,250	Arrived at MA50	TB	1,180		1,260
AKRA	7,250	7,575	7,650	7,700	7,900	Bullish consolidations	SB	7,550	7,625	7,800
UNTR	33,500	35,000	35,300	36,500	38,000	Pulled back resistance	S	35,200		
Property & Construction										
LPCX	3,760	3,900	3,930	4,070	4,270	Bullish momentum	SB	3,880		4,000
WIKA	1,900	1,985	2,020	2,080	2,170	Stoch golden-cross	SB	1,920		2,080
BSDE	1,710	1,750	1,765	1,790	1,845	Bullish momentum	B	1,740	1,765	1,805
WSKT	2,100	2,180	2,210	2,270	2,350	Teknikal rebound	SB	2,170	2,200	2,270
ADHI	2,180	2,230	2,280	2,300	2,360	Consolidations	PS	2,220		
Basic Industry & Chemical										
SMGR	9,900	10,300	10,300	10,700	11,075	Oversold	TB	10,200		10,700
CPIN	3,070	3,140	3,260	3,300	3,400	Bearish momentum	S	3,250		
MAIN	850	860	870	960	1,020	Bearish momentum	W	855		
INTP	21,900	22,650	23,700	23,500	24,650	Overbought	PS	23,200		
Miscellaneous										
SRIL	358	368	388	390	410	Consolidations	PS	380		
ASII	7,700	7,850	8,075	8,325	8,325	Consolidations	H	7,900		8,300
Finance										
BBTN	2,720	2,840	2,920	2,960	3,090	Reached the target	H	2,900		2,960
BMRI	6,925	7,100	7,225	7,300	7,525	Consolidations	PS	6,900		
BTPN	2,400	2,450	2,470	2,540	2,600	Consolidations	PS	2,440		
BJBR	2,150	2,350	2,420	2,480	2,690	Oversold	W	2,400		
BBRI	15,500	15,850	16,250	16,250	16,600	Consolidations	H	15,800		16,300
Infrastructure										
TLKM	3,950	4,050	4,190	4,180	4,430	Bullish momentum	H	4,150		4,300
PGAS	1,580	1,690	1,830	1,865	2,000	Pulled back resistance	S	1,820		

Source : Reliance Sekuritas Indonesia

Analyst Conclusions:

Break out the all time high level, The index probably minor corrections.

Legend :

- B: BUY (allocate till 100% of the weighted capital to accumulate, higher than 50% upside probability)
- SB: SPECULATIVE BUY (allocate 25%-50% of the weighted capital to accumulate, 25%-50% upside probability)
- W: WAIT (wait for proper entry level, do the stop-loss if necessary)
- H: HOLD (hold the portfolio position, aim for the best price to distribute)
- PS: PARTIAL SELL (distribute 25%-50% part of the portfolio, 25%-50% downside probability)
- S: SELL (distribute till 100% of the portfolio, higher than 50% downside probability)
- TB: TRADING BUY (short term or intraday trading within a tight trading range. Highly speculative).

Ticker	Resistance Fractal	Price 11/6/2017	Support Fractal	Weekly High	Weekly Low	Indicator			Moving Average			
						Stochastic	RSI	B. Band	20 Days	50 Days	200 Days	
AALI.JK	15,175	14,675	14,550	14,750	14,600	Oversold	Bullish	Neutral	Middle Bands	Upper	Under	Under
ACES.JK	1,280	1,190	1,205	1,400	1,240	Neutral	Bearish	Neutral	Middle Bands	Under	Under	Upper
ADHI.JK	2,280	2,280	2,170	2,290	2,220	Neutral	Bullish	Neutral	Middle Bands	Upper	Upper	Upper
ADRO.JK	1,910	1,900	1,825	1,925	1,875	Neutral	Bullish	Neutral	Middle Bands	Upper	Upper	Upper
AISA.JK	1,030	900	975	990	940	Oversold	Bearish	Neutral	Lower Bands	Under	Under	Under
AKRA.JK	7,350	7,650	7,225	7,650	7,500	Neutral	Bullish	Neutral	Middle Bands	Upper	Upper	Upper
ANTM.JK	670	670	640	720	655	Neutral	Bearish	Neutral	Middle Bands	Upper	Under	Under
APLN.JK	300	250	248	274	256	Oversold	Bullish	Neutral	Middle Bands	Under	Under	Upper
ASII.JK	8,175	8,075	7,900	8,175	8,075	Neutral	Bearish	Neutral	Middle Bands	Under	Upper	Under
ASRI.JK	414	402	388	414	406	Neutral	Bearish	Neutral	Middle Bands	Upper	Upper	Upper
BBCA.JK	21,625	21,000	20,200	21,625	20,925	Neutral	Bearish	Neutral	Middle Bands	Upper	Upper	Upper
BBKP.JK	570	550	550	565	555	Oversold	Bearish	Neutral	Middle Bands	Under	Under	Under
BBNI.JK	8,000	7,700	7,575	8,000	7,700	Neutral	Bearish	Neutral	Middle Bands	Upper	Upper	Upper
BBRI.JK	15,750	16,250	15,525	16,425	15,700	Overbought	Bullish	Overbought	Upper Bands	Upper	Upper	Upper
BBTN.JK	3,140	2,920	2,690	2,920	2,820	Neutral	Bullish	Neutral	Middle Bands	Under	Under	Upper
BDMN.JK	5,275	5,025	5,025	5,275	5,075	Oversold	Bullish	Neutral	Middle Bands	Under	Under	Upper
BHIT.JK	103	98	97	100	98	Oversold	Bullish	Neutral	Middle Bands	Under	Under	Under
BJBR.JK	2,470	2,420	2,410	2,470	2,440	Oversold	Bullish	Neutral	Middle Bands	Under	Under	Upper
BJTM.JK	720	700	690	705	700	Neutral	Bullish	Neutral	Middle Bands	Upper	Upper	Upper
BKSL.JK	148	139	125	148	141	Neutral	Bearish	Neutral	Middle Bands	Upper	Under	Upper
BMRI.JK	7,425	7,225	6,950	7,425	7,100	Neutral	Bearish	Neutral	Middle Bands	Upper	Upper	Upper
BMTR.JK	650	595	580	615	600	Neutral	Bullish	Neutral	Middle Bands	Upper	Upper	Upper
BSDE.JK	1,800	1,765	1,705	1,775	1,735	Neutral	Bullish	Neutral	Middle Bands	Upper	Under	Under
BTPN.JK	2,560	2,470	2,550	2,560	2,480	Oversold	Bullish	Neutral	Lower Bands	Under	Under	Under
BWPT.JK	262	244	244	250	246	Oversold	Bullish	Neutral	Middle Bands	Under	Under	Under
CMNP.JK	1,430	1,400	1,340	1,430	1,400	Neutral	Bullish	Neutral	Upper Bands	Upper	Upper	Under
CPIN.JK	3,550	3,260	3,200	3,390	3,310	Neutral	Bearish	Neutral	Middle Bands	Upper	Upper	Upper
CSAP.JK	470	464	430	470	464	Neutral	Bearish	Neutral	Middle Bands	Upper	Under	Under
CTRA.JK	1,245	1,225	1,175	1,230	1,220	Neutral	Bullish	Neutral	Middle Bands	Upper	Upper	Upper
DILD.JK	410	386	378	400	386	Neutral	Bearish	Neutral	Middle Bands	Under	Under	Under
EXCL.JK	3,530	3,550	3,300	3,600	3,390	Overbought	Bullish	Neutral	Middle Bands	Upper	Under	Upper
GGRM.JK	67,900	73,950	61,925	74,500	71,025	Overbought	Bearish	Overbought	Middle Bands	Upper	Upper	Upper
GIAA.JK	380	360	320	374	362	Neutral	Bearish	Neutral	Middle Bands	Upper	Upper	Upper
GJTL.JK	735	680	680	715	685	Oversold	Bearish	Neutral	Middle Bands	Under	Under	Under
HEXA.JK	3,660	3,580	3,450	3,660	3,540	Neutral	Bearish	Neutral	Middle Bands	Under	Under	Under
HRUM.JK	2,410	2,270	2,340	2,410	2,330	Oversold	Bearish	Neutral	Lower Bands	Under	Upper	Upper
ICBP.JK	9,000	8,750	8,650	9,000	8,800	Neutral	Bearish	Neutral	Middle Bands	Under	Under	Upper
IMAS.JK	1,050	905	920	1,050	985	Neutral	Bearish	Neutral	Middle Bands	Under	Under	Under
INCO.JK	3,120	3,170	2,780	3,180	2,960	Neutral	Bullish	Neutral	Upper Bands	Upper	Upper	Upper
INDR.JK	8,325	8,200	8,150	8,325	8,250	Neutral	Bullish	Neutral	Middle Bands	Under	Under	Under
INDY.JK	2,390	2,490	2,210	2,500	2,340	Neutral	Bullish	Overbought	Upper Bands	Upper	Upper	Upper
INTA.JK	302	408	320	412	396	Overbought	Bullish	Overbought	Middle Bands	Upper	Upper	Upper
INTP.JK	23,500	23,700	19,050	23,500	22,225	Neutral	Bullish	Overbought	Middle Bands	Upper	Upper	Upper
ITMG.JK	23,175	21,475	21,200	22,950	22,100	Neutral	Bearish	Neutral	Middle Bands	Under	Upper	Upper
JPPA.JK	1,385	1,345	1,275	1,400	1,335	Neutral	Bullish	Neutral	Middle Bands	Upper	Upper	Under
JSMR.JK	6,600	6,575	6,250	6,600	6,475	Neutral	Bullish	Neutral	Middle Bands	Upper	Upper	Upper
KIJA.JK	312	306	302	308	304	Overbought	Bearish	Neutral	Middle Bands	Under	Under	Under
KLBF.JK	1,650	1,610	1,585	1,650	1,605	Neutral	Bullish	Neutral	Middle Bands	Under	Under	Upper
KRAS.JK	510	494	492	510	498	Neutral	Bearish	Neutral	Middle Bands	Under	Under	Under
LPCK.JK	4,300	3,930	3,780	3,960	3,840	Oversold	Bullish	Neutral	Middle Bands	Upper	Under	Under
LPKR.JK	730	645	695	700	655	Oversold	Bearish	Oversold	Lower Bands	Under	Under	Under
LPPF.JK	9,900	10,150	8,475	10,425	8,900	Overbought	Bullish	Neutral	Middle Bands	Upper	Upper	Under
LSIP.JK	1,540	1,560	1,415	1,560	1,510	Neutral	Bullish	Overbought	Upper Bands	Upper	Upper	Upper
MAIN.JK	965	870	855	900	880	Neutral	Bullish	Neutral	Middle Bands	Under	Under	Under
MAPI.JK	6,975	6,700	6,300	6,975	6,550	Neutral	Bearish	Neutral	Middle Bands	Upper	Under	Upper
MASA.JK	274	234	216	236	226	Neutral	Bullish	Neutral	Middle Bands	Under	Upper	Upper
MNCN.JK	1,595	1,490	1,480	1,585	1,505	Neutral	Bearish	Neutral	Middle Bands	Under	Upper	Under
MPPA.JK	615	595	570	615	590	Neutral	Bearish	Neutral	Middle Bands	Under	Under	Under
MTLA.JK	372	368	356	372	356	Overbought	Bearish	Neutral	Middle Bands	Upper	Upper	Upper
MYOR.JK	2,160	2,100	2,050	2,170	2,120	Neutral	Bullish	Neutral	Middle Bands	Under	Upper	Upper
PGAS.JK	1,900	1,830	1,630	1,900	1,835	Neutral	Bearish	Neutral	Middle Bands	Upper	Upper	Under
PTBA.JK	11,750	11,400	10,450	11,750	11,600	Neutral	Bearish	Neutral	Middle Bands	Upper	Upper	Under
RALS.JK	925	900	865	925	900	Neutral	Bearish	Neutral	Middle Bands	Under	Under	Under
ROTI.JK	1,370	1,295	1,240	1,295	1,270	Neutral	Bullish	Neutral	Middle Bands	Upper	Upper	Under
SCMA.JK	2,320	2,000	2,120	2,200	2,010	Neutral	Bearish	Neutral	Middle Bands	Under	Under	Under
SGRO.JK	2,110	2,530	2,300	2,530	2,500	Overbought	Bullish	Overbought	Middle Bands	Upper	Upper	Upper
SIMP.JK	580	520	515	530	525	Oversold	Bullish	Neutral	Middle Bands	Under	Under	Under
SMCB.JK	850	820	800	850	820	Neutral	Bearish	Neutral	Middle Bands	Upper	Upper	Upper
SMGR.JK	11,050	10,300	10,200	11,050	10,425	Neutral	Bearish	Neutral	Middle Bands	Under	Under	Upper
SMRA.JK	1,045	1,030	1,005	1,045	1,025	Neutral	Bearish	Neutral	Middle Bands	Upper	Under	Under
SRIL.JK	414	388	362	398	370	Neutral	Bullish	Neutral	Middle Bands	Upper	Upper	Upper
SSIA.JK	610	600	570	605	585	Oversold	Bullish	Neutral	Middle Bands	Upper	Under	Under
SSMS.JK	1,550	1,505	1,480	1,515	1,495	Neutral	Bullish	Neutral	Middle Bands	Upper	Upper	Under
TLKM.JK	4,320	4,190	3,910	4,210	4,080	Neutral	Bullish	Neutral	Middle Bands	Under	Under	Under
TOTL.JK	745	720	650	745	725	Neutral	Bearish	Neutral	Middle Bands	Upper	Under	Under
UNTR.JK	37,250	35,300	32,050	37,250	34,900	Neutral	Bearish	Neutral	Middle Bands	Upper	Upper	Upper
UNVR.JK	49,950	49,175	48,900	49,950	49,775	Neutral	Bearish	Neutral	Middle Bands	Under	Under	Upper

Source : Reliance Research

Legend :

- Movement: Bullish and Bearish (Indicator Stochastic)
- Momentum: Oversold, Overbought and Neutral (Indicator RSI)
- Resistance Fractal: Strong Resistance
- Support Fractal: Strong Support
- Green: Good Conditions
- Red: Poor Conditions

HEAD OFFICE

Reliance Building

Jl. Pluit Sakti Raya No. 27AB,
Pluit
Jakarta 14450
T. +62 21 661 7768
F. +62 21 661 9884

RESEARCH DIVISION

Lanjar Nafi Taulat I

lanjar@reliancesekuritas.com

Aji Setiawan

aji@reliancesekuritas.com

Shanti Dwi Jayanti

santi@reliancesekuritas.com

Technical Research Analyst

Associate Research Analyst

Associate Research Analyst

EQUITY DIVISION

Jakarta- Pluit

Jl. Pluit Sakti Raya No. 27AB,
Pluit
Jakarta 14450
T. +62 21 661 7768
F. +62 21 661 9884

Bandung

Jl.Cisangkuy No.58
Bandung 40115
T. +62 22 721 8200
F. +62 22 721 9255

Surabaya - Gubeng

Jl. Bangka No. 22
Surabaya 60281
T. +62 31 501 1128
F. +62 31 503 3196

Makassar

Jl. Boto Lempangan No. 34 J
Makassar- Sulawesi Selatan
T. +62 411 3632388
F. +62 411 3614634

Jakarta - Sudirman

Menara Batavia Ground Floor
Jl.KH.Mas Mansyur Kav 126
Jakarta 10220
T. +62 21 57905455
F. +62 21 57950728

Tasikmalaya

Ruko Tasik Indah Plaza No.21
Jl. KHZ Mustofa No. 345
Tasikmalaya 46121
T. +62 265 345000
F. +62 265 345003

Surabaya - Diponegoro

Jl. Diponegoro No.26D
Surabaya 60261
T. +62 31 567 0388
F. +62 31 561 0528

Medan

Jl. Teuku Amir Hamzah No.40-O
Medan 20117
T. +62 61 6638592
F. +62 61 6638023

Jakarta - Kebon Jeruk

Plaza Kebon Jeruk
Jl.Raya Perjuangan Blok A/2
Jakarta 11530
T. +62 21 532 4074
F. +62 21 536 2157

Malang

Jl. Guntur No. 19
Malang 65112
T. +62 341 347 611
F. +62 341 347 615

Bali - Denpasar

Dewata Square Blok A3
Jl. Letda Tantular Renon
Denpasar 802361
T. +62 361 225099
F. +62 361 245099

Tangerang

Jl. Pahlawan Seribu Ruko BSD
Sektor 7 Blok RK kav. 9
Tangerang 15310
T. +62 21 5387495
F. +62 21 5387494

Pekanbaru

Jl. Jendral Sudirman No.73
Pekanbaru-Riau
T. +62 761 848414
F. +62 761 849456

Pontianak

Jl. MT Haryono No. 6
Pontianak 78121
T. +62 561 575674
F. +62 561 575670

Solo

Jl. Slamet Riyadi 330^a
Solo 57145
T. +62 271 736599
F. +62 271 733478

Balikpapan

Ruko Bukit Damai Indah
Blok I, No. 3, Rt.34
Jl. MT. Haryono, Gunung
Bahagia, Balikpapan Selatan
76114
T. +62 542 746313
F. +62 542 746317

IDX CORNER & INVESTMENT GALLERY

STIE Malangkeucwara

Jl. Terusan Candi Kalasan
Malang 65142
T. +62 341 491813
F. +62 341 495619

Universitas Muhammadiyah Gresik

Jl. Sumatra 101 GKB
Gresik 61121
T. +62 31 3951414
F. +62 31 3952585

Universitas Surabaya

Jl. Raya Kalirungkut
Surabaya 60293
T. +62 31 2981203
F. +62 31 2981204

Universitas Muhammadiyah Malang

Jl. Raya Tlogomas 246
Malang 65144
T. +62 341 464318-9
F. +62 341 460782

Universitas Siliwangi Tasikmalaya

Jl. Siliwangi No. 24
Tasikmalaya 46151
T. +62 265 323685
F. +62 265 323534

Politeknik Kediri

Jl. Mayor Bismo No. 27
Kediri 64121
T +62 354 683128
F +62 354 683128

Universitas Negeri Malang

Jl. Surabaya No. 6
Malang 65145
T. +62 341 585914
F. +62 341 55288

Universitas Negeri Makassar

FakultasEkonomiGedung BT Lt. 2
Jl. A. P. Pettarani, Kampus UNM, Gunungsari
Baru
Makassar 90222
T. +62 411 889464, 881244
F. +62 411 887604

Universitas Muhammadiyah Pontianak

Jl. Ahmad Yani, No. 111
Pontianak 78124
T. +62 561 743465
F. +62 561 766840

STIE AAS

Jalan Slamet Riyadi No 361
Kartasura, Surakarta
T. +62 271 726156
F. +62 271 726156

Universitas Tanjungpura Pontianak

Jl. Jendral Ahmad Yani
Pontianak 78124
T. +62 561 743465
F. +62 561 766840

STIE "AUB" Surakarta

Jl. Mr. Sartono 97, Cengklik
Nusukan, Surakarta 57135
T. +62 271 854803
F. +62 271 853084

STIESIA Surabaya

Jl. MenurPumpungan 30
Surabaya
T. +62 31 5947505
F. +62 31 5932218

Universitas Muhammadiyah Sidoarjo

Jl. Majapahit 666 B
Sidoarjo, JawaTimur
T. +62 31 8945444
F. +62 31 8949333

Universitas Pesantren Tinggi Darul Ulum

Kompleks Pp Darul Ulu, Peterongan
Jombang, JawaTimur 60281
T. +62 321 873655
F. +62 321 875771

STIE Tri Bhakti

Jl. Teuku Umar No.24
Cut Meutia Setiakawan, Bekasi
T. +62 21 8242 9400, 8242 9500
F. +62 271 726156

STIKOM BALI

Jl. Raya Puputan No. 86, Renon, Denpasar
Timur, kota Denpasar
Bali-80234
T. +62 361 244445

Universitas 17 Agustus 1945 Banyuwangi

Jl. AdiSucipto 26
Banyuwangi, JawaTimur
T. +62 333 419163
F. +62 333 419163

IAIN Antasari

Jl. Ahmad Yani Km. 4,5 Banjarmasin
T. +62 511 3267583

Universitas Islam Kalimantan

Jl. Adiyaksa No.2, Kayu Tangi, Banjarmasin
T. +62 511 3303871
F. +62 511 3303871

Disclaimer:

Information, opinions and recommendations contained in this document are presented by PT Reliance Sekuritas Indonesia Tbk. from sources that are considered reliable and dependable. This document is not an offer, invitation or any kind of representations to decide to buy or sell stock. Investment decisions taken based on this document is not the responsibility of PT Reliance Sekuritas Indonesia Tbk. PT Reliance Sekuritas Indonesia Tbk. reserves the right to change the contents of this document at any time without prior notice.