

Market View

IHSG (-0.01%) ditutup melemah tipis -0.37 poin dilevel 6021.46 setelah bergerak cukup optimis sejak sesi pertama. Sektor konsumsi (+0.94%) menjadi pendorong dengan saham GGRM (+3.88%) dan HMSP (+1.74%). Sedangkan sektor infrastruktur (-0.76%) menjadi penekan pergerakan IHSG hingga ditutup pada zona negatif dengan saham PGAS (-1.94%) dan JSRM (-1.15%). Turunnya ekspor minyak kelapa sawit Indonesia diperiode sebelumnya menjadi triger penekan beberapa saham sektor perkebunan. Investor asing tercatat net sell 321.20 Miliar rupiah dengan saham BBKA, BBRI dan BMRI menjadi yang terbanyak di jual.

Net BUY:

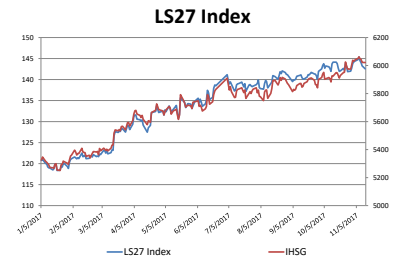
BBRI, ASII, GGRM, LPPF, MAPI

Net SELL:

BBKA, UNTR, TLKM, JSRM, BBNI

Secara teknikal IHSG bergerak terkonsolidasi dengan arah lebih akan menguji support MA20 dilevel 6000 yang juga akan menjadi support psikologis. Indikator stochastic bergerak tertekan sejak akhir pekan sebelumnya dengan momentum bearish RSI yang bergerak negatif. Sehingga diperkirakan IHSG masih akan bergerak cenderung mixed tertekan dengan range pergerakan 6000-6044. Saham-saham yang masih dapat dicermati diantaranya BSDE, CPIN, DILD, ICBP, JPFA, SMGR.

Indeks saham di Asia dibuka berfluktuasi menjelang banyaknya data ekonomi yang akan rilis di Tiongkok. Indeks Nikkei (+0.15%) dan TOPIX (-0.20%) terkonsolidasi menghentakkan pelemahan ekuitas di Tokyo sejak akhir pekan lalu. MSCI Indonesia menambahkan BBTN dan menghapus LPKR, MNCN dan SMRA pada MSCI Global Standard Indexnya. Harga Minyak WTI (-0.11%) bertahan ditas \$55 per barrel dengan Lonjakan signifikan terjadi pada harga nikel (+3.14%) pada pagi ini.



13-Nov-17	Close	Chg (%)	YTD Chg (%)
LS27 Index	142.55	-0.50%	19.13%
IHSG	6,021.46	-0.01%	13.68%
LQ45	1,000.95	-0.02%	13.15%

Top 7		Bottom 7	
JPFA	2.72%	INTP	-2.63%
PTBA	1.05%	ITMG	-2.44%
HRUM	0.89%	BBNI	-1.57%
SMSM	0.78%	JSRM	-1.15%
KIJA	0.65%	SIMP	-0.97%
UNTR	0.46%	INDF	-0.93%
CPIN	0.32%	BBKA	-0.85%

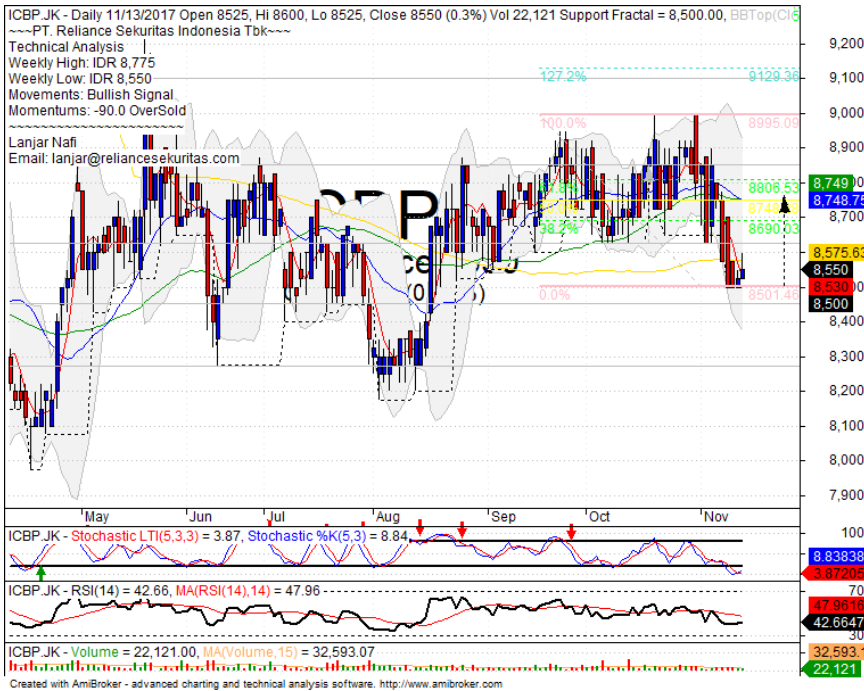
IHSG Technical Review



Analyst:
Lanjar Nafi
lanjar@reliancesekuritas.com
 +62 21 5793 0008 ext. 604

your **reliable** partner | 1

ICBP

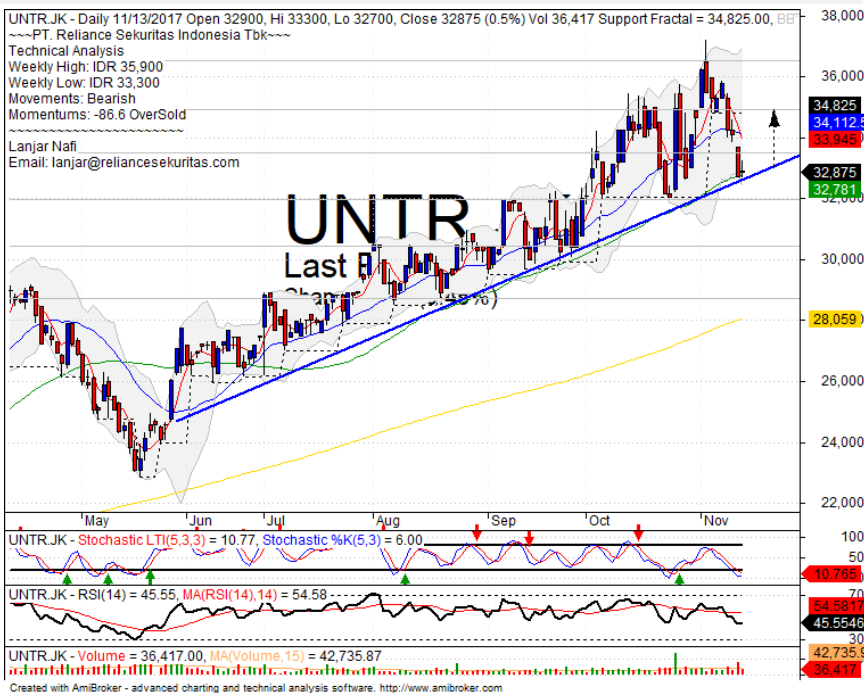


TRADING BUY

Analisis:

- *Candlestick* mengkonfirmasi pola *bullish harami* dengan indikasi *whipsaw* pada level *support* MA200. Target penguatan mencoba mencapai level 61.8% *Fibonacci ratio*.
 - Batasan *stop-loss* jika harga saham terkonfirmasi gagal *whipsaw* MA200.
 - Indikator *Stochastic* bergerak pada *zona oversold* dengan pola *golden-cross*.
- | | |
|----------------|-------------|
| • Support | : 8275-8500 |
| • Resistance | : 8625-8850 |
| • Stop-loss | : 8475 |
| • Target Price | : 8800 |

UNTR

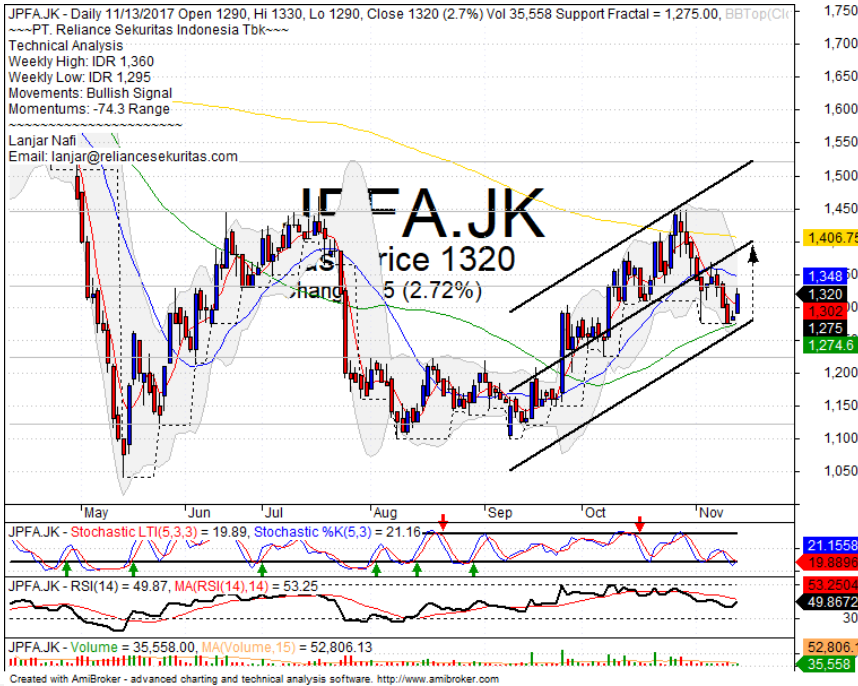


SPECULATIVE BUY

Analisis:

- *Candlestick* membentuk pola *bullish harami* tepat pada *support* MA50 dan *bullish trend*. Indikasi menguat menutup gap hingga *resistance fractal*.
 - Batasan *stop-loss* jika harga terkonfirmasi *breakout* MA50 *support*.
 - Indikator *stochastic* bergerak pada *zona oversold* dan berpotensi membentuk pola *golden-cross*.
- | | |
|----------------|---------------|
| • Support | : 30500-32000 |
| • Resistance | : 33500-35000 |
| • Stop-loss | : 32400 |
| • Target Price | : 32000 |

JPFA



BUY

Analisis:

- Harga mengkonfirmasi pola *bullish harami* dengan indikasi *rebound* pada *support* MA50. Bergerak menguat menuju MA200.
 - Batasan *stop-loss* jika harga *breakout* MA50 *support*.
 - Indikator *stochastic* bergerak jenuh pada *level oversold* dengan indikasi *golden-cross*.
- **Support** : 1125-1225
 - **Resistance** : 1330-1445
 - **Stop-loss** : 1260
 - **Target Price** : 1410

CPIN



TRADING BUY

Analisis:

- Candlestick membentuk pola *bullish harami* dan mencoba *rebound* pada *level bullish trend line support* dengan indikasi menguat terbatas menguji *resistance*.
 - Batasan *stop-loss* jika terkonfirmasi *breakout bullish trend line*.
 - Indikator *stochastic* bergerak tertekan dan mulai menjenuh pada *level oversold*. Indikasi *golden-cross* dengan *momentum* RSI yang tidak begitu murah.
- **Support** : 2980-3070
 - **Resistance** : 3180-3290
 - **Stop-loss** : 3120
 - **Target Price** : 3310

Ticker	S1	S2	Close Price	R1	R2	Note	Rating	Stop-loss	Target Price
Misc Industry									
ASII	8,000	8,150	8,350	8,350	8,500	Consolidations	PS	8,100	
SMSM	1,225	1,265	1,295	1,300	1,330	Oversold	TB	1,280	1,330
SRIL	364	378	386	392	404	Bearish momentum	S	374	
Basic Industry									
SMGR	9,475	9,875	10,000	10,275	10,700	Oversold	TB	9,850	10,350
INTP	19,000	20,000	20,325	20,700	21,450	Break out support	W	20,800	
CPIN	2,970	3,070	3,170	3,180	3,300	Bullish harami	TB	3,150	3,300
JPFA	1,120	1,220	1,320	1,330	1,450	Rebounded at support	B	1,300	1,410
Finance									
BBTN	2,700	2,830	2,910	2,960	3,080	Arrived at Resistance	PS	2,860	
BBNI	7,650	7,800	7,850	7,950	8,100	Bearish momentum	PS	7,800	
BBRI	3,140	3,230	3,260	3,320	3,410	Bearish momentum	S	3,220	
BBCA	19,175	19,900	20,475	20,600	21,500	Break out support	W	20,400	
Consumer									
UNVR	48,000	49,000	49,225	50,000	51,000	Consolidations	W	49,200	
ICBP	8,275	8,450	8,550	8,625	8,850	Rebound	SB	8,500	8,750
INDF	7,775	7,925	7,950	8,100	8,325	Oversold	TB	7,900	8,300
Property									
PWON	580	605	615	625	650	Oversold	PS	600	
KIJA	300	306	310	314	320	Consolidations	H	304	
Infrastructure									
TLKM	3,950	4,060	4,100	4,180	4,300	Pulled back MA20	PS	4,050	
JSMR	6,125	6,300	6,425	6,525	6,750	Break out support	S	6,400	
Trading									
UNTR	30,425	32,000	32,875	33,525	35,000	Bullish homing pigeon	TB	32,500	34,825
ACES	1,200	1,250	1,255	1,300	1,340	Consolidations	W	1,240	
MAPI	6,250	6,500	6,550	6,700	6,900	Stoch golden-cross	W	6,400	
Mining									
PTBA	10,600	11,300	12,000	12,000	12,500	Consolidations	PS	11,700	
ITMG	18,500	19,700	20,975	21,175	22,750	Break out support	W	20,500	
HRUM	2,080	2,180	2,260	2,260	2,350	Rebounded at MA200	TB	2,250	2,430
ADRO	1,750	1,800	1,820	1,850	1,900	Oversold	W	1,790	
Agriculture									
AALI	14,350	14,575	14,500	14,800	15,100	Consolidations	TB	14,500	15,000
SMP	492	504	510	520	540	Oversold	W	502	

Analyst Conclusions:

Break out the all time high level, The index probably minor corrections.

Legend :

- B: BUY (allocate till 100% of the weighted capital to accumulate, higher than 50% upside probability)
- SB: SPECULATIVE BUY (allocate 25%-50% of the weighted capital to accumulate, 25%-50% upside probability)
- W: WAIT (wait for proper entry level, do the stop-loss if necessary)
- H: HOLD (hold the portfolio position, aim for the best price to distribute)
- PS: PARTIAL SELL (distribute 25%-50% part of the portfolio, 25%-50% downside probability)
- S: SELL (distribute till 100% of the portfolio, higher than 50% downside probability)
- TB: TRADING BUY (short term or intraday trading within a tight trading range. Highly speculative).

Ticker	Resistance Fractal	Price 11/13/2017	Support Fractal	Weekly High	Weekly Low	Indicator			Moving Average			
						Stochastic	RSI	B. Band	20 Days	50 Days	200 Days	
AALI.JK	14,725	14,500	14,525	14,725	14,625	Neutral	Bearish	Neutral	Lower Bands	Under	Under	Under
ACES.JK	1,305	1,255	1,180	1,305	1,220	Neutral	Bullish	Neutral	Middle Bands	Under	Upper	Upper
ADHI.JK	2,300	2,200	2,180	2,300	2,230	Neutral	Bearish	Neutral	Middle Bands	Upper	Upper	Upper
ADRO.JK	1,910	1,820	1,800	1,915	1,840	Neutral	Bearish	Neutral	Middle Bands	Under	Under	Upper
AISA.JK	1,030	895	855	935	875	Oversold	Bullish	Neutral	Middle Bands	Under	Under	Under
AKRA.JK	7,700	7,250	7,225	7,700	7,375	Neutral	Bearish	Neutral	Middle Bands	Under	Upper	Upper
ANTM.JK	725	685	660	725	705	Neutral	Bearish	Neutral	Middle Bands	Upper	Upper	Under
APLN.JK	260	244	248	260	248	Oversold	Bearish	Neutral	Middle Bands	Under	Under	Upper
ASII.JK	8,175	8,350	7,900	8,425	8,200	Overbought	Bearish	Neutral	Middle Bands	Upper	Upper	Upper
ASRI.JK	412	390	396	412	400	Neutral	Bearish	Neutral	Middle Bands	Under	Upper	Upper
BBCA.JK	21,625	20,475	20,700	21,125	20,700	Oversold	Bearish	Neutral	Middle Bands	Under	Upper	Upper
BBKP.JK	570	560	550	580	565	Neutral	Bearish	Neutral	Middle Bands	Upper	Under	Under
BBNI.JK	8,000	7,850	7,700	8,025	7,950	Neutral	Bearish	Neutral	Middle Bands	Upper	Upper	Upper
BBRI.JK	3,150	3,260	3,105	3,370	3,275	Neutral	Bearish	Neutral	Middle Bands	Upper	Upper	Upper
BBTN.JK	2,960	2,910	2,790	2,960	2,920	Neutral	Bullish	Neutral	Middle Bands	Under	Under	Upper
BDMN.JK	5,275	5,675	4,850	5,800	4,980	Neutral	Bullish	Neutral	Upper Bands	Upper	Upper	Upper
BHIT.JK	100	97	96	100	98	Neutral	Bullish	Neutral	Middle Bands	Under	Under	Under
BJBR.JK	2,470	2,310	2,410	2,430	2,350	Oversold	Bullish	Neutral	Middle Bands	Under	Under	Under
BJTM.JK	720	715	680	715	695	Neutral	Bullish	Neutral	Upper Bands	Upper	Upper	Upper
BKSL.JK	148	137	137	142	140	Neutral	Bearish	Neutral	Middle Bands	Under	Under	Upper
BMRI.JK	7,425	7,050	7,075	7,275	7,100	Oversold	Bearish	Neutral	Middle Bands	Under	Upper	Upper
BMTR.JK	620	585	580	620	595	Neutral	Bearish	Neutral	Middle Bands	Under	Upper	Upper
BSDE.JK	1,775	1,655	1,705	1,770	1,695	Neutral	Bearish	Oversold	Lower Bands	Under	Under	Under
BTPN.JK	2,510	2,450	2,400	2,510	2,440	Neutral	Bullish	Neutral	Middle Bands	Under	Under	Under
BWPT.JK	260	240	240	260	248	Neutral	Bearish	Neutral	Lower Bands	Under	Under	Under
CMNP.JK	1,430	1,410	1,340	1,430	1,405	Neutral	Bearish	Neutral	Middle Bands	Upper	Upper	Upper
CPIN.JK	3,550	3,170	3,200	3,330	3,210	Oversold	Bearish	Neutral	Middle Bands	Under	Upper	Upper
CSAP.JK	470	454	450	466	456	Neutral	Bearish	Neutral	Lower Bands	Under	Under	Under
CTRA.JK	1,245	1,210	1,175	1,235	1,215	Neutral	Bearish	Neutral	Middle Bands	Upper	Upper	Under
DILD.JK	394	388	378	394	380	Neutral	Bullish	Neutral	Middle Bands	Under	Under	Under
EXCL.JK	3,530	3,500	3,500	3,580	3,530	Neutral	Bearish	Neutral	Middle Bands	Upper	Under	Upper
GGRM.JK	67,900	78,950	61,925	79,100	77,000	Overbought	Bearish	Overbought	Middle Bands	Upper	Upper	Upper
GIAA.JK	380	344	332	360	346	Neutral	Bullish	Neutral	Middle Bands	Under	Upper	Under
GJTL.JK	735	670	675	690	685	Oversold	Bearish	Neutral	Middle Bands	Under	Under	Under
HEXA.JK	3,660	3,740	3,520	3,790	3,600	Neutral	Bullish	Neutral	Upper Bands	Upper	Under	Under
HRUM.JK	2,410	2,260	2,260	2,320	2,280	Oversold	Bearish	Neutral	Middle Bands	Under	Upper	Upper
ICBP.JK	8,900	8,550	8,500	8,775	8,550	Oversold	Bullish	Neutral	Middle Bands	Under	Under	Under
IMAS.JK	1,050	950	900	1,000	990	Neutral	Bullish	Neutral	Middle Bands	Under	Upper	Under
INCO.JK	3,340	3,130	2,780	3,340	3,170	Neutral	Bearish	Neutral	Middle Bands	Upper	Upper	Upper
INDF.JK	8,325	7,950	7,950	8,225	8,075	Oversold	Bearish	Neutral	Middle Bands	Under	Under	Under
INDY.JK	2,390	2,290	2,470	2,890	2,570	Overbought	Bullish	Overbought	Upper Bands	Upper	Upper	Upper
INTA.JK	416	428	406	430	414	Overbought	Bullish	Overbought	Middle Bands	Under	Upper	Upper
INTP.JK	23,950	20,325	19,050	23,800	21,200	Oversold	Bearish	Neutral	Middle Bands	Under	Upper	Upper
ITMG.JK	23,175	20,975	20,750	21,750	21,250	Neutral	Bullish	Neutral	Middle Bands	Under	Upper	Upper
JFPA.JK	1,370	1,325	1,275	1,360	1,295	Oversold	Bullish	Neutral	Middle Bands	Under	Under	Under
JSMR.JK	6,600	6,425	6,250	6,750	6,600	Neutral	Bearish	Neutral	Middle Bands	Upper	Upper	Upper
KIJA.JK	310	310	310	310	308	Neutral	Bullish	Neutral	Upper Bands	Upper	Upper	Under
KLBF.JK	1,650	1,600	1,595	1,630	1,610	Neutral	Bearish	Neutral	Middle Bands	Under	Under	Under
KLBF.JK	545	492	492	545	500	Neutral	Bearish	Neutral	Lower Bands	Under	Under	Under
KLBF.JK	4,000	3,860	3,810	4,000	3,900	Neutral	Bearish	Neutral	Middle Bands	Under	Under	Under
LPCK.JK	730	635	635	650	650	Oversold	Bullish	Oversold	Middle Bands	Under	Under	Under
LPPK.JK	10,625	10,200	8,475	10,625	10,175	Neutral	Bearish	Neutral	Middle Bands	Upper	Upper	Under
LSIP.JK	1,570	1,550	1,485	1,570	1,560	Overbought	Bearish	Neutral	Middle Bands	Upper	Upper	Upper
MAIN.JK	965	855	850	870	860	Oversold	Bullish	Neutral	Middle Bands	Under	Under	Under
MAPI.JK	6,975	6,550	6,350	6,825	6,500	Neutral	Bullish	Neutral	Middle Bands	Upper	Under	Upper
MASA.JK	274	228	216	238	228	Neutral	Bullish	Neutral	Middle Bands	Under	Upper	Upper
MNCN.JK	1,595	1,650	1,440	1,690	1,480	Overbought	Bullish	Neutral	Middle Bands	Upper	Upper	Upper
MPPA.JK	610	600	590	610	600	Neutral	Bearish	Neutral	Middle Bands	Under	Under	Under
MTLA.JK	372	356	356	370	356	Neutral	Bearish	Neutral	Middle Bands	Under	Upper	Upper
MYOR.JK	2,170	2,070	2,050	2,150	2,090	Neutral	Bearish	Neutral	Middle Bands	Upper	Upper	Upper
PCAS.JK	1,860	1,770	1,765	1,860	1,825	Neutral	Bearish	Neutral	Middle Bands	Upper	Upper	Under
PTBA.JK	12,100	12,000	11,325	12,100	11,975	Neutral	Bullish	Neutral	Middle Bands	Upper	Upper	Upper
PWON.JK	645	615	625	645	630	Neutral	Bearish	Neutral	Middle Bands	Under	Under	Under
RALS.JK	980	915	880	980	910	Neutral	Bearish	Neutral	Middle Bands	Upper	Under	Under
ROTI.JK	1,370	1,320	1,270	1,325	1,300	Neutral	Bearish	Neutral	Middle Bands	Upper	Upper	Under
SCMA.JK	2,050	1,950	1,935	2,050	1,985	Neutral	Bearish	Neutral	Middle Bands	Under	Under	Under
SGRO.JK	2,110	2,580	2,460	2,580	2,540	Overbought	Bullish	Overbought	Middle Bands	Upper	Upper	Upper
SIMP.JK	525	510	510	525	515	Neutral	Bearish	Neutral	Middle Bands	Under	Under	Under
SMCB.JK	850	820	815	825	820	Neutral	Bearish	Neutral	Middle Bands	Upper	Upper	Under
SMGR.JK	10,525	10,000	10,200	10,525	10,125	Oversold	Bearish	Neutral	Middle Bands	Under	Under	Upper
SMRA.JK	1,035	985	1,005	1,035	1,010	Oversold	Bearish	Neutral	Lower Bands	Under	Under	Under
SMSM.JK	1,335	1,295	1,300	1,335	1,290	Oversold	Bearish	Neutral	Middle Bands	Upper	Upper	Upper
SRIL.JK	398	386	362	392	388	Neutral	Bearish	Neutral	Middle Bands	Upper	Upper	Upper
SSIA.JK	605	575	570	600	585	Neutral	Bearish	Neutral	Middle Bands	Under	Under	Under
SSMS.JK	1,545	1,485	1,485	1,545	1,500	Neutral	Bearish	Neutral	Lower Bands	Under	Under	Under
TLKM.JK	4,320	4,100	4,100	4,210	4,160	Neutral	Bearish	Neutral	Middle Bands	Under	Under	Under
TOTL.JK	745	715	695	735	715	Neutral	Bullish	Neutral	Middle Bands	Upper	Under	Under
UNTR.JK	37,250	32,875	34,825	35,900	33,300	Oversold	Bearish	Neutral	Middle Bands	Under	Upper	Upper
UNVR.JK	49,900	49,225	49,050	49,725	49,500	Neutral	Bearish	Neutral	Middle Bands	Under	Under	Upper
WIKI.JK	2,060	2,020	1,925	2,060	2,020	Neutral	Bearish	Neutral	Middle Bands	Upper	Upper	Under
WSKT.JK	2,250	2,190	2,120	2,250	2,190	Neutral	Bearish	Neutral	Middle Bands	Upper	Upper	Under

Source : Reliance Research

Legend :

- Movement: Bullish and Bearish (Indicator Stochastic)
- Momentum: Oversold, Overbought and Neutral (Indicator RSI)
- Resistance Fractal: Strong Resistance
- Support Fractal: Strong Support
- Green: Good Conditions
- Red: Poor Conditions

HEAD OFFICE

Reliance Building

Jl. Pluit Sakti Raya No. 27AB,
Pluit
Jakarta 14450
T. +62 21 661 7768
F. +62 21 661 9884

RESEARCH DIVISION

Lanjar Nafi Taulat I

lanjar@reliancesekuritas.com

Aji Setiawan

aji@reliancesekuritas.com

Shanti Dwi Jayanti

santi@reliancesekuritas.com

Technical Research Analyst

Associate Research Analyst

Associate Research Analyst

EQUITY DIVISION

Jakarta- Pluit

Jl. Pluit Sakti Raya No. 27AB,
Pluit
Jakarta 14450
T. +62 21 661 7768
F. +62 21 661 9884

Bandung

Jl.Cisangkuy No.58
Bandung 40115
T. +62 22 721 8200
F. +62 22 721 9255

Surabaya - Gubeng

Jl. Bangka No. 22
Surabaya 60281
T. +62 31 501 1128
F. +62 31 503 3196

Makassar

Jl. Boto Lempangan No. 34 J
Makassar- Sulawesi Selatan
T. +62 411 3632388
F. +62 411 3614634

Jakarta - Sudirman

Menara Batavia Ground Floor
Jl.KH.Mas Mansyur Kav 126
Jakarta 10220
T. +62 21 57905455
F. +62 21 57950728

Tasikmalaya

Ruko Tasik Indah Plaza No.21
Jl. KHZ Mustofa No. 345
Tasikmalaya 46121
T. +62 265 345000
F. +62 265 345003

Surabaya – Diponegoro

Jl. Diponegoro No.26D
Surabaya 60261
T. +62 31 567 0388
F. +62 31 561 0528

Medan

Jl. Teuku Amir Hamzah No.40-O
Medan 20117
T. +62 61 6638592
F. +62 61 6638023

Jakarta – Kebon Jeruk

Plaza Kebon Jeruk
Jl.Raya Perjuangan Blok A/2
Jakarta 11530
T. +62 21 532 4074
F. +62 21 536 2157

Malang

Jl. Guntur No. 19
Malang 65112
T. +62 341 347 611
F. +62 341 347 615

Bali - Denpasar

Dewata Square Blok A3
Jl. Letda Tantular Renon
Denpasar 802361
T. +62 361 225099
F. +62 361 245099

Tangerang

Jl. Pahlawan Seribu Ruko BSD
Sektor 7 Blok RK kav. 9
Tangerang 15310
T. +62 21 5387495
F. +62 21 5387494

Pekanbaru

Jl. Jendral Sudirman No.73
Pekanbaru-Riau
T. +62 761 848414
F. +62 761 849456

Pontianak

Jl. MT Haryono No. 6
Pontianak 78121
T. +62 561 575674
F. +62 561 575670

Solo

Jl. Slamet Riyadi 330^a
Solo 57145
T. +62 271 736599
F. +62 271 733478

Balikpapan

Ruko Bukit Damai Indah
Blok I, No. 3, Rt.34
Jl. MT. Haryono, Gunung
Bahagia, Balikpapan Selatan
76114
T. +62 542 746313
F. +62 542 746317

IDX CORNER & INVESTMENT GALLERY

STIE Malangkeucwara

Jl. Terusan Candi Kalasan
Malang 65142
T. +62 341 491813
F. +62 341 495619

Universitas Muhammadiyah Gresik

Jl. Sumatra 101 GKB
Gresik 61121
T. +62 31 3951414
F. +62 31 3952585

Universitas Surabaya

Jl. Raya Kalirungkut
Surabaya 60293
T. +62 31 2981203
F. +62 31 2981204

Universitas Muhammadiyah Malang

Jl. Raya Tlogomas 246
Malang 65144
T. +62 341 464318-9
F. +62 341 460782

Universitas Siliwangi Tasikmalaya

Jl. Siliwangi No. 24
Tasikmalaya 46151
T. +62 265 323685
F. +62 265 323534

Politeknik Kediri

Jl. Mayor Bismo No. 27
Kediri 64121
T +62 354 683128
F +62 354 683128

Universitas Negeri Malang

Jl. Surabaya No. 6
Malang 65145
T. +62 341 585914
F. +62 341 55288

Universitas Negeri Makassar

FakultasEkonomiGedung BT Lt. 2
Jl. A. P. Pettarani, Kampus UNM, Gunungsari
Baru
Makassar 90222
T. +62 411 889464, 881244
F. +62 411 887604

Universitas Muhammadiyah Pontianak

Jl. Ahmad Yani, No. 111
Pontianak 78124
T. +62 561 743465
F. +62 561 766840

STIE AAS

Jalan Slamet Riyadi No 361
Kartasura, Surakarta
T. +62 271 726156
F. +62 271 726156

Universitas Tanjungpura Pontianak

Jl. Jendral Ahmad Yani
Pontianak 78124
T. +62 561 743465
F. +62 561 766840

STIE "AUB" Surakarta

Jl. Mr. Sartono 97, Cengklik
Nusukan, Surakarta 57135
T. +62 271 854803
F. +62 271 853084

STIESIA Surabaya

Jl. MenurPumpungan 30
Surabaya
T. +62 31 5947505
F. +62 31 5932218

Universitas Muhammadiyah Sidoarjo

Jl. Majapahit 666 B
Sidoarjo, JawaTimur
T. +62 31 8945444
F. +62 31 8949333

Universitas Pesantren Tinggi Darul Ulum

Kompleks Pp Darul Ulu, Peterongan
Jombang, JawaTimur 60281
T. +62 321 873655
F. +62 321 875771

STIE Tri Bhakti

Jl. Teuku Umar No.24
Cut Meutia Setiakawan, Bekasi
T. +62 21 8242 9400, 8242 9500
F. +62 271 726156

STIKOM BALI

Jl. Raya Puputan No. 86, Renon, Denpasar
Timur, kota Denpasar
Bali-80234
T. +62 361 244445

Universitas 17 Agustus 1945 Banyuwangi

Jl. AdiSucipto 26
Banyuwangi, JawaTimur
T. +62 333 419163
F. +62 333 419163

IAIN Antasari

Jl. Ahmad Yani Km. 4,5 Banjarmasin
T. +62 511 3267583

Universitas Islam Kalimantan

Jl. Adiyaksa No.2, Kayu Tangi, Banjarmasin
T. +62 511 3303871
F. +62 511 3303871

Disclaimer:

Information, opinions and recommendations contained in this document are presented by PT Reliance Sekuritas Indonesia Tbk. from sources that are considered reliable and dependable. This document is not an offer, invitation or any kind of representations to decide to buy or sell stock. Investment decisions taken based on this document is not the responsibility of PT Reliance Sekuritas Indonesia Tbk. PT Reliance Sekuritas Indonesia Tbk. reserves the right to change the contents of this document at any time without prior notice.